

Nursing and Midwifery Labour Force Census: South Australia Statistical Profile 2007

Workforce Development
Workforce Reform and Information Unit

May 2008

For more information

Workforce Reform & Information Unit
Workforce Development
Department of Health
PO Box 287
Rundle Mall
Adelaide SA 5000
Telephone: 08 8226 7013
www.nursingsa.com/workforce_doc.php

Email: health.workplandev@health.sa.gov.au
DX243

TTY calls: for people who are deaf or have hearing/speech impairments, contact (08) 8233 2574.

Non-English speaking: for more information in languages other than English, call the interpreting and Translating Centre and ask them to call The Department of Health. This service is available at no cost to you, contact (08) 8226 1990.

(c) Department of Health, Government of South Australia.
All rights reserved.
Printed May 2008

Contents

Explanatory Notes	5
Purpose	5
Caution regarding the use of census data	5
Background	5
Census Form	6
Scope and Coverage	6
Methodology	7
Collection Timing	7
Response Rate	7
Data Entry	8
Rounding	8
Counting Rules	8
Survey Results 2007	9
2007 Nursing and Midwifery Employment	9
Average Hours Worked per Week	10
Geographical Location	11
Demographics Profile	13
Age Profile	13
First Registration Profile	15
Diversity Profile	17
Nursing Qualifications	18
Area of Practice	20

List of Tables

Table 1: Number of Qualifications Active on the Nurses Board of SA Register/Roll, 30 June 2003 to 30 June 2007	6
Table 2: Calculation of the 2007 Census Response Rate	7
Table 3: Census Response Rate, 2001 to 2007	7
Table 4: Labour force status of registered or enrolled nurses/ midwives, 2007	9
Table 5: Average hours worked per week as an employed registered or enrolled nurses/midwives, 2007	10
Table 6: Average hours worked per week of employed registered or enrolled nurses/ midwives by core nursing role, 2007	11
Table 7: Geographical location of registered or enrolled nurses/ midwives in main job by gender, 2007	11

Table 8: Average age of registered or enrolled nurses/midwives by classification, 2007	14
Table 9: Nurses and Midwives (SA Educated) Registered or Enrolled with the Nurses Board of SA, 2002-2003 to 2006-2007	15
Table 10: Number of years since initial Nursing Registration or Enrolment of 2006-2007 Active Registrations and Enrolments with the Nurses Board of SA	16
Table 11: Usual Residence of registered or enrolled nurses/midwives by gender and geographical location, 2007	17
Table 12: Current qualifications of 2006-2007 Active Registrations and Enrolments with the Nurses Board of SA	19
Table 13: All registered or enrolled nurses and midwives by employment sector, 2007	20
Table 14: Principal area of practice of all registered or enrolled nurses and midwives by main job, 2007	21

List of Figures

Figure 1: Percentage of average hours worked per week of employed registered or enrolled nurses/ midwives by core nursing role, 2007	10
Figure 2: Percentage of registered or enrolled nurses/midwives in main job by geographical location and gender, 2007	12
Figure 3: Percentage and number of registered or enrolled nurses/midwives by 5-year age cohorts, 2007	13
Figure 4: Average age of registered or enrolled nurses/midwives by nursing type, 2007	14
Figure 5: Average years worked as a nurse or midwife of registered or enrolled nurses/midwives since first registration or enrolment in Australia, 2007	15
Figure 6: Active Nursing Registrations and Enrolments with the Nurses Board of SA 2006-2007 by year of initial Nursing Registration or Enrolment, 1965 to 2007	16
Figure 7: Percentage of registered or enrolled nurses and midwives that obtain their qualification overseas by Standard Australian Classification of Countries (SACC), 2007	18
Figure 8: Number of completed post registration or enrolment courses of registered or enrolled nurses and midwives by field of study, 2007	19
Figure 9: Percentage of registered or enrolled nurses and midwives by classification of main job, 2007	21

Explanatory Notes

Purpose

This report provides an analysis of the results for the nursing and midwifery labour force in South Australia, collected through the Australian Institute of Health and Welfare (AIHW) Annual Nursing and Midwifery Labour Force Census 2007.

During 2007, the AIHW Nursing and Midwifery Labour Force Census form was distributed by the Nurses' Board of South Australia (nbsa) in collaboration with the South Australia Department of Health (DH), to all registered and enrolled nurses and midwives who are applying for renewal of their registration or enrolment in South Australia.

The results from this survey can assist with the identification of nursing and midwifery trends across the South Australia labour force, and meet the Department of Health annual national data reporting requirements to the Australian Institute of Health and Welfare.

Caution regarding the use of census data

The survey results in this report should be used with caution; the information may not be an accurate reflection of the total nursing and midwifery labour force population in South Australia.

Any interpretation of this report should take into account the information collected through the survey does not allow assessment of biases in terms of certain groups of nurses and midwives being less likely to complete the survey.

When interpreting the findings of the report consideration should be given to the impact of this unknown information. In particular, the characteristics of the nurse population who did not respond to the survey may differ from the characteristics profile of the survey respondents, and may result in an over or under estimation in some categories of the nurse population.

Historical comparisons of census information should be also used with discretion, as the survey response rate has reduced over time, from 83% in 2001 to 70% in 2007.

The Department of Health continues to work with the AIHW to improve survey format, response rates and survey methodology.

Background

In 1980, South Australia became one of the first jurisdictions in Australia to initiate an annual nursing survey, with the implementation of the Annual Nursing Survey (ANS) through the South Australia Health Commission and Nurses' Board of South Australia Nursing Manpower Project.

From 1994, the ANS was amalgamated with information provided by all Australian state/territory jurisdictions into a national dataset by the AIHW, allowing nursing information to be shared at a national, state and regional level.

There is a delay between the data collection year and release of AIHW reports, with the latest AIHW report available being based on the 2005 census results. The South Australia nursing workforce section of this information was published in the South Australia Department of Health Nursing and Midwifery Labour Force Report 2005, released July 2006.

The AIHW workforce publications are a collation of data from all Australian jurisdictions (www.aihw.gov.au).

Census Form

In 2002, the Australian Health Ministers' Advisory Council (AHMAC) and the Australian Health Workforce Officials Committee (AHWOC) requested a review of the AIHW census data requirements. This resulted in the definition of a draft national minimum data set and the development a new four page census questionnaire survey tool, being distributed to all jurisdictions in 2003.

In 2006, South Australia distributed a new census form, which was designed to align with the national format (Appendix B).

Scope and Coverage

In South Australia, the Nursing and Midwifery Labour Force Census 2007 was distributed with the annual registration and enrolment renewal process through the Nurses Board of SA. This process included all active status nurses and midwives who were renewing their registration, new registrations, and persons reinstated to the register/ roll at 30 June 2007.

Table 1: Number of Qualifications Active on the Nurses Board of SA Register/Roll, 30 June 2003 to 30 June 2007

Qualification ⁽¹⁾	Active nbsa Registrations				
	2003	2004	2005	2006	2007
Enrolled Nurses	5,811	6,218	6,343	6,484	6,651
General Nurses	18,719	19,146	19,555	20,082	21,138
Midwives	4,404	4,486	4,468	4,306	4,273
Mental Health Nurses	1,685	1,721	1,739	1,715	1,738
Nurse Practitioners	2	5	9	18	24
All Nurses	24,530	25,364	25,951	26,921	28,140

(1) The total for all nurses does not collate to the combined total of individual qualifications as some nurses and midwives can hold multiple qualifications.

Methodology

A census questionnaire was attached to the notice of renewal (with return paid envelope) and was sent to all registered and enrolled nurses currently listed on the nbsa register, as part of the annual nursing registration and enrolment renewal process. The census was completed by the survey respondents with information about their usual working situation at that date.

Collection Timing

The nbsa annual renewal process occurred from 1 July –31 August 2007.

Response Rate

At June 2007, there were 28,140 nurses registered and enrolled with the nbsa, of which 130 nurses sought early registration. While an additional 107 surveys were processed in person by a combination of Nurse Practitioners and Nurses with Limitations and Restrictions at the time of registration. A further 327 nurses had incorrect mailing addresses and therefore did not receive a census questionnaire form.

Census response rate is calculated by dividing the number of survey respondents by the number of census forms distributed. At December 2007 there were 19,458 returned surveys processed, while 27,790 registered or enrolled nurses had a valid mailing address at 2007.

Table 2: Calculation of the 2007 Census Response Rate

Number of processed Census Forms	19,458
Number of distributed Census Forms	27,790
Response rate	70%

Table 3 shows the survey response rates over the last 7 years, with a 70% census response rate in 2007, representing 14% decrease from the 2002 census.

Table 3: Census Response Rate, 2001 to 2007

Year	Census Response Rates
2001	83%
2002	84%
2003 ⁽¹⁾	75%
2004	74%
2005	72%
2006 ⁽²⁾	69%
2007	70%

(1) New survey tool was introduction.

(2) The census form was designed into the national format.

SA Health continues to implement new strategies to promote the nursing and midwifery labour force census to the nurses and midwives population, in order to maximise the number of respondents to the survey.

Data Entry

In 2007, data processing arrangements continued with the contractor appointed in 2005 by national agreement, whereby AIHW Nursing and Midwifery Labour Force Census forms from all jurisdictions are processed by a central data processing company.

Up until 2004, South Australia controlled its own data entry process where data was entered manually, with double entry including error checking to ensure accuracy of data input. The new arrangement involved the implementation of a different technique in which the census forms are scanned and data is cleaned and edited by the data processing company.

This change may have influenced data which involved interpretation of hand written responses.

Rounding

In addition, it should be noted that the percentages in the tables and graphs in this publication may not add up to 100% in all instances as rounding may have occurred.

Counting Rules

For a description of the data counting rules applied to the census data, refer to Appendix C.

Survey Results 2007

2007 Nursing & Midwifery Employment

During 2007, there were 19,458 registered or enrolled nurses and midwives who responded to AIHW Nursing and Midwifery Labour Force Census 2007, of which 76% were registered nurses (RN) and 22% were enrolled nurses (EN).

Of these registered or enrolled nurses and midwives 16% were also authorised by the nbsa to practice as Registered Midwives or Direct Entry Midwives, and 7% were authorised to practice as Mental Health Nurses.

During 2007, 85% registered or enrolled nurses/midwives were employed and working as a registered or enrolled nurses/midwife, 91% were working in South Australia.

5% of employed registered or enrolled nurses/midwives who were working in South Australia had returned to their job in the last 12 month, after a period of unpaid absence.

A further, 5% of registered or enrolled nurses/midwives were not employed in nursing or midwifery; of whom 81% were not looking for work in nursing, 3% were looking for part time work in nursing, and 8% were looking for full time work in nursing.

While 0.5% registered nurses and midwives in 2007 had never worked in nursing and 1% authorised midwives had never worked in midwifery.

Table 4: Labour Force status of registered or enrolled nurses/midwives, 2007

Labour Force Status	No. of Response(s)	Percentage of Total (%)
Employed in nursing/midwifery in SA (or mainly in SA)	15,023	77.2
On Extended Leave	465	2.4
Employed in nursing midwifery, Interstate or Unknown	1,450	7.5
Employed elsewhere, not in nursing/midwifery	476	2.4
Not Employed at all or overseas	566	2.9
Unknown	1,478	7.6
Total	19,458	100.0

Average hours worked per week

Employed registered or enrolled nurses and midwives worked an average of 28.5 hrs per week in their main job, which is equivalent to an average 57hrs per fortnight or 0.76 full time equivalents (FTE).

Table 5: Average hours worked per week as an employed registered or enrolled nurses/midwives, 2007

Average hours worked per week	Main Job	2nd Job
Paid regular hours	26.65 hrs	1.07 hrs
Hours worked above contract hours	0.84 hrs	0.03 hrs
Paid overtime hours	0.40 hrs	0.02 hrs
Unpaid extra hours	0.62 hrs	0.03 hrs
Total	28.46 hrs	1.16 hrs

During 2007, employed registered and enrolled nurses/midwives average hours worked per week in their main job was spent (71%) in the core role of clinical nursing practice.

Figure 1: Percentage of average hours worked per week of employed registered or enrolled nurses/midwives by core nursing role, 2007

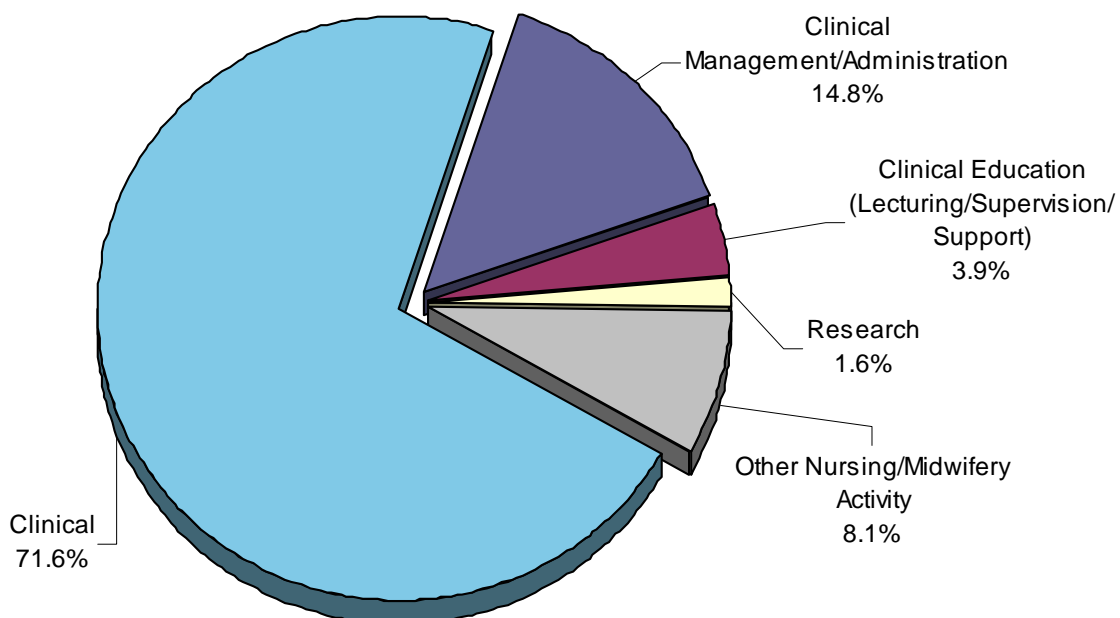


Table 6: Average hours worked per week of employed registered or enrolled nurses/midwives by core nursing role, 2007

Core Nursing Role	Main Job	2nd Job
Clinical	18.36 hrs	0.73 hrs
Clinical Management/Administration	3.79 hrs	0.04 hrs
Clinical Education (Lecturing/Supervision/Support)	1.01 hrs	0.07 hrs
Research	0.41 hrs	0.03 hrs
Other Nursing/Midwifery Activity	2.09 hrs	0.07 hrs
Total Average Hours	25.59 hrs	0.95 hrs

Geographical Location

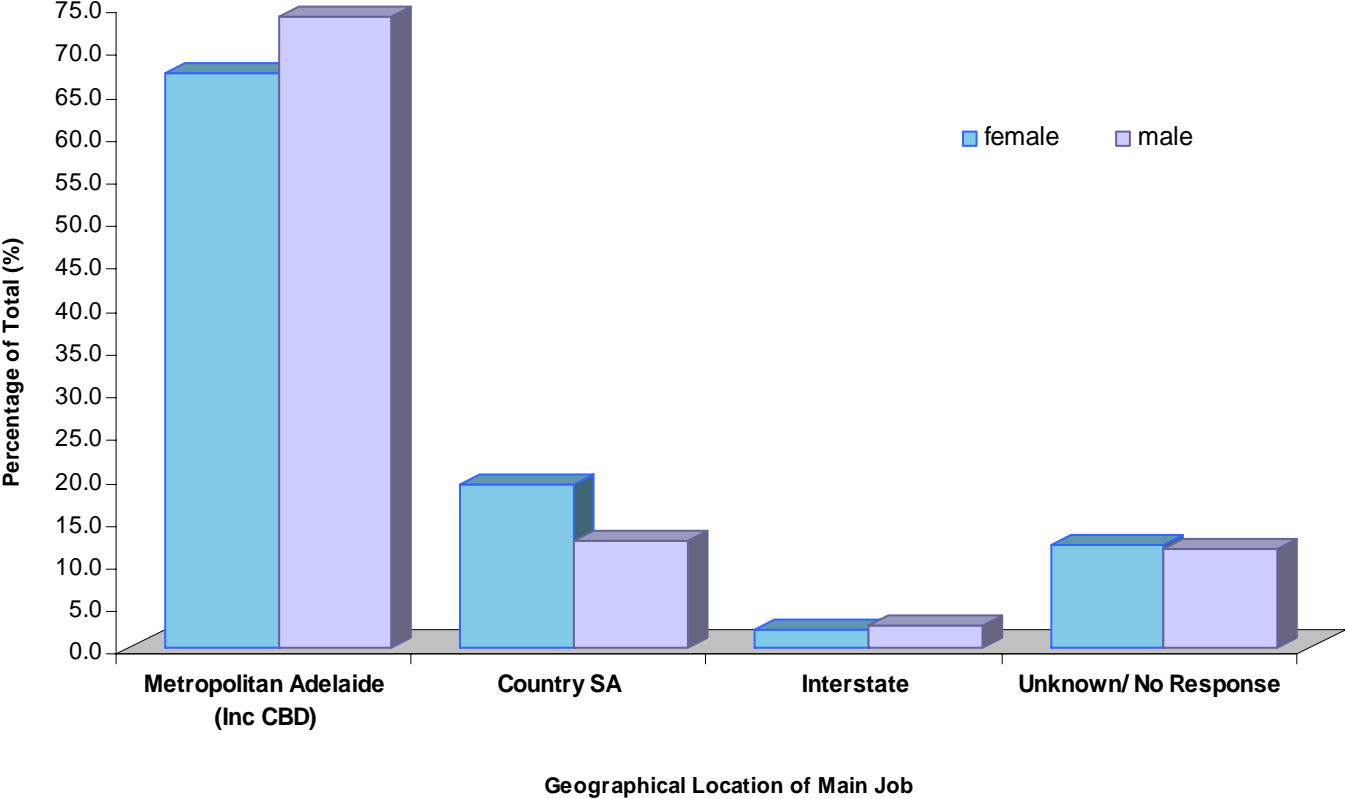
67% registered or enrolled nurses/midwives main job was in the Adelaide metropolitan (including CBD) area in 2007, and 89% were female.

Table 7: Geographical location of registered or enrolled nurses/midwives in main job by gender, 2007⁽¹⁾

Geographical Location	Female	Male	Unknown	Total	% of Total
Adelaide Metropolitan (Inc CBD)	11,695	1,180	236	13,111	67.4
Eyre	320	15	2	337	1.7
Murray Lands	550	35	14	599	3.1
Northern	829	57	10	896	4.6
Outer Adelaide	607	38	9	654	3.4
South East	525	27	5	557	2.9
Yorke and Lower North	462	26	5	493	2.5
Interstate	338	40	7	385	2.0
Unknown/ No Response	2,099	182	145	2,426	12.5
Total All Respondents	17,425	1,600	433	19,458	100.0

(1) Based on the Statistical Local Area (SLA) and is an Australian Standard Geographical Classification (ASGC) defined area. (Australian Bureau of Statistic (ABS), Statistical Geography Volume 1: Australian Standard Geographical Classification (ASGC) 2001 (cat. no. 1216.0))

Figure 2: Percentage of registered or enrolled nurses/midwives in main job by geographical location and gender, 2007



Demographics Profile

Age Profile

The data from the 2007 Census Survey indicated an average age of all registered and enrolled nurses/midwives increased from 43.8 years to 44.7 years. Over the same period, the Nurses' Board of SA active registrations showed an average age increase from 43.7 years to 43.9 years.

Persons authorised to practice as a registered Mental Health Nurses reported the highest average age (49.3 years) in 2007, with those working in midwifery reporting an average age of 48.2 years.

Figure 3: Percentage and number of registered or enrolled nurses/midwives by 5-year age cohorts, 2007

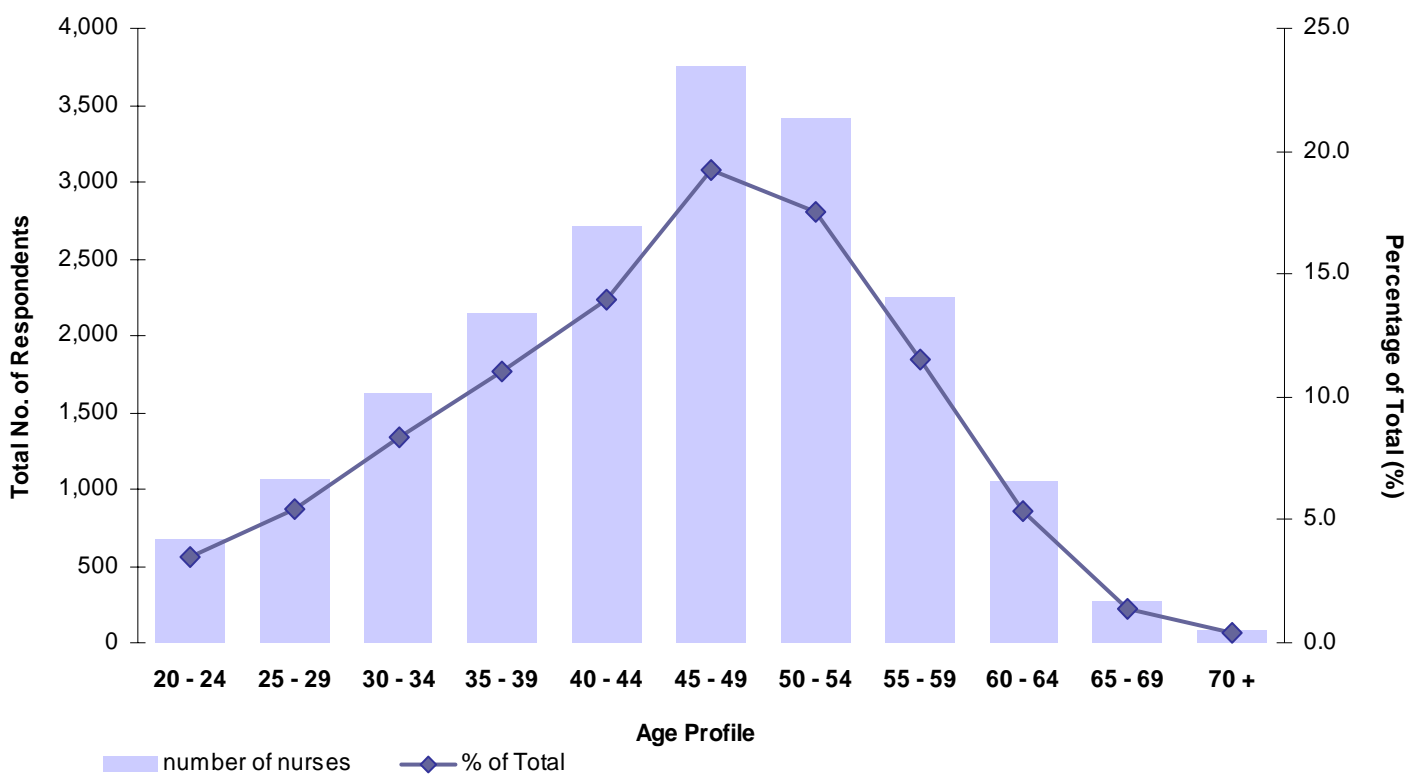


Figure 4: Average age of registered or enrolled nurses/midwives by nursing type, 2007

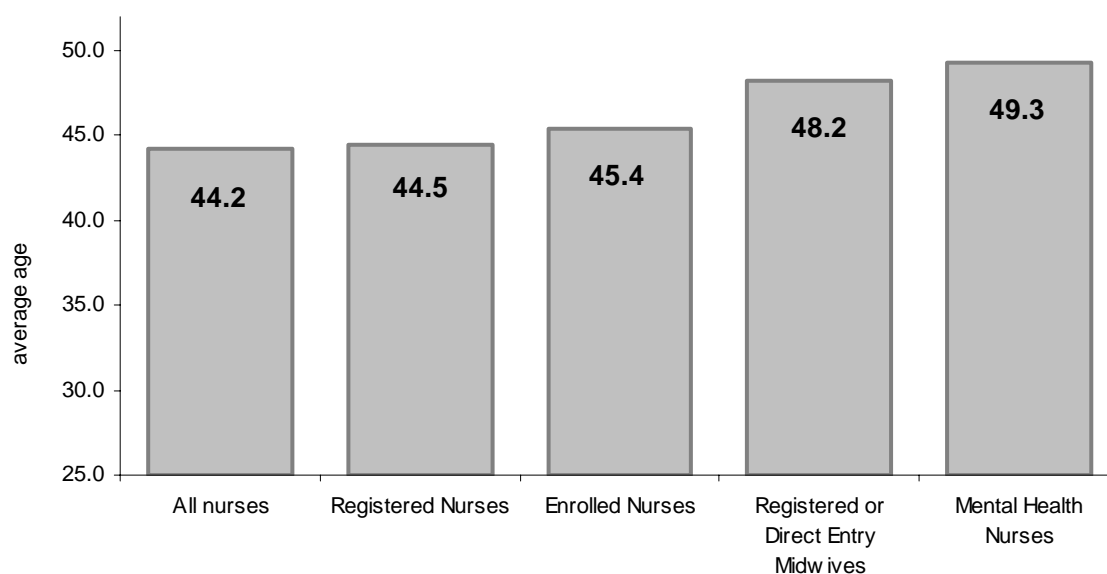


Table 8: Average age of registered or enrolled nurses/midwives by classification, 2007

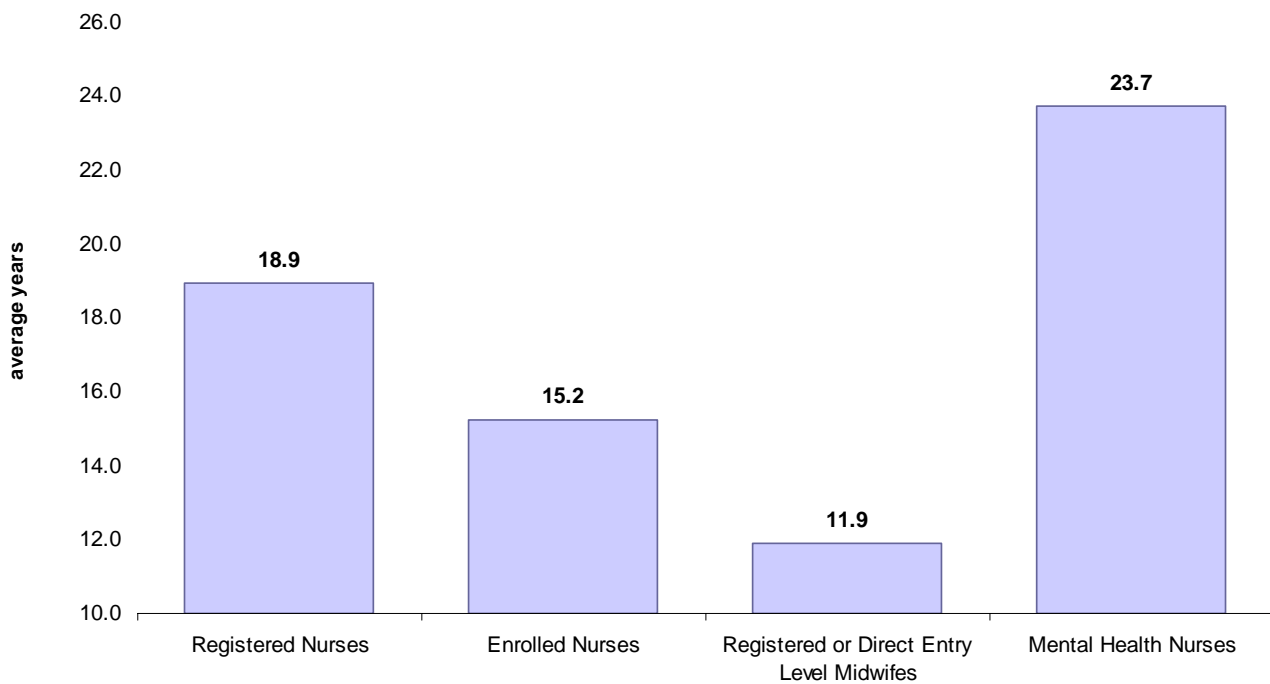
Classification	Total No.	Average Age (yrs)
Registered Nurse/Midwife (L1)	8,843	43.76
Enrolled Nurses	3,698	45.95
Nurse/Midwife Specialist	444	46.22
Clinical Nurse/Midwife (L2)	2,172	46.76
Nurse/Midwife Manager (L3)	516	47.38
Staff Development/Education (L4)	17	47.41
Staff Development/Education (L3)	123	47.64
Clinical Nurse/Midwife Consultant (L3)	565	47.71
Non-nursing Award	150	48.55
Management (L4)	155	49.90
Higher Education/TAFE Lecturer	110	50.03
Clinical (L4)	56	50.79
Nurse Practitioner (L3) ⁽¹⁾	72	50.92
Professor/Academic	69	51.07
Director of Nursing/Midwifery (L5)	218	51.94
Other	193	49.63
Unknown	2,057	43.67

(1) This category of nursing in South Australia is an over estimation, due to difficulties with respondents correctly identifying their current classification.

First Registration Profile

Registered or enrolled nurses/midwives worked an average of 18 years in nursing since their first registration or enrolment in Australia.

Figure 5: Average years worked as a nurse or midwife of registered or enrolled nurses/midwives since first registration or enrolment in Australia, 2007



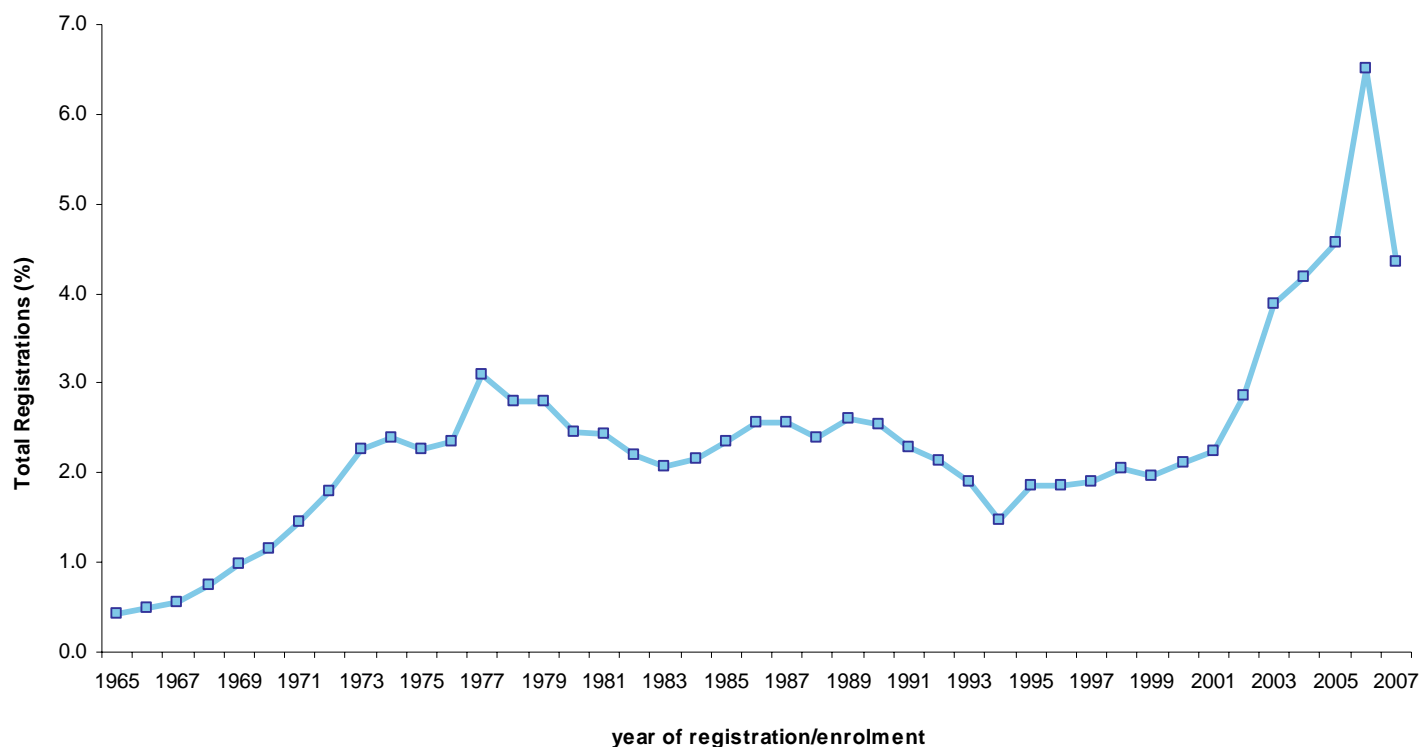
In 2006-2007, the Nurses Board of SA reported the initial registration or enrolment of 1,360 nurses and midwives who were educated in South Australia, representing a 14.4% increase since 2005-2006.

Table 9: Nurses and Midwives (SA Educated) Registered or Enrolled with the Nurses Board of SA, 2002-2003 to 2006-2007 ⁽¹⁾

Year	Enrolled Nurses (EN)	Registered Nurses (RN)	Authorised Midwife	Authorised Mental Health Nurse	Total
2002-03	445	550	50	17	1,062
2003-04	539	556	36	33	1,164
2004-05	454	591	67	42	1,154
2005-06	428	667	70	24	1,189
2006-07	459	799	75	27	1,360

(1) Sourced Nurses Board of SA; Annual Report 2006-2007; Page 30

Figure 6: Active Nursing Registrations and Enrolments with the Nurses Board of SA 2006-2007 by year of initial Nursing Registration or Enrolment, 1965 to 2007 ⁽¹⁾



(1) Sourced Nurses Board of SA Active Registration and Enrolment Information, 2007

Table 10: Number of years since initial Nursing Registration or Enrolment of 2006-2007 Active Registrations and Enrolments with the Nurses Board of SA ⁽¹⁾

Years since Initial Registration/ Enrolment	No. Active Registrations/ Enrolments	Percentage Of Total (%)
25 + years	9,248	33.2
20 to < 25 years	3,226	11.6
15 to < 20 years	3,305	11.9
10 to < 15 years	2,483	8.9
5 to < 10 years	3,099	11.1
4 to < 5 years	1,072	3.8
3 to < 4 years	1,156	4.2
2 to < 3 years	1,263	4.5
1 to < 2 years	1,800	6.5
< 12 months	1,201	4.3
Total Active Registrations/ Enrolments	27,853	100.0

(1) Sourced Nurses Board of SA Active Registration and Enrolment Information, 2007

Diversity Profile

The gender profile of registered or enrolled nurses/midwives has remained relatively consistent over the last 4 years, with 90% registered or enrolled nurses/midwives identifying as female and 8% male at 2007.

Over the same period, 90% registered and enrolled nurses/midwives identified as Australian citizens.

During 2007, the number of Aboriginal and/or Torres Strait Islander registered or enrolled nurses/ midwives increased 0.1% (or 18 persons), representing 0.4% of total registered or enrolled nurses/midwives.

Of the 79 Aboriginal and/or Torres Strait Islander registered or enrolled nurses and midwives 65.8% identified as Registered Nurses, 31.6% Enrolled Nurses, and the remaining 2.5% as direct entry midwives.

94.9% Aboriginal and/or Torres Strait Islander registered or enrolled nurses/midwives were female, compared to 5.1% male.

During 2007, 74% registered or enrolled nurses/midwives usual place of residence was in the Adelaide metropolitan (including the CBD) area.

Table 11: Usual Residence of registered or enrolled nurses/ midwives by gender and geographical location, 2007 ⁽¹⁾

Geographical Location	Female	Male	Unknown	Total	% of Total
Adelaide Metropolitan (Inc CBD)	12,884	1,297	227	14,408	74.0
Eyre	361	16	3	380	2.0
Murray Lands	628	36	8	672	3.5
Northern	900	62	9	971	5.0
Outer Adelaide	1,079	75	10	1,164	6.0
South East	554	28	6	588	3.0
Yorke and Lower North	538	30	5	573	2.9
Interstate	351	40	8	399	2.1
Unknown/ No Response	130	16	157	303	1.6
Total All Respondents	17,425	1,600	433	19,458	100.0

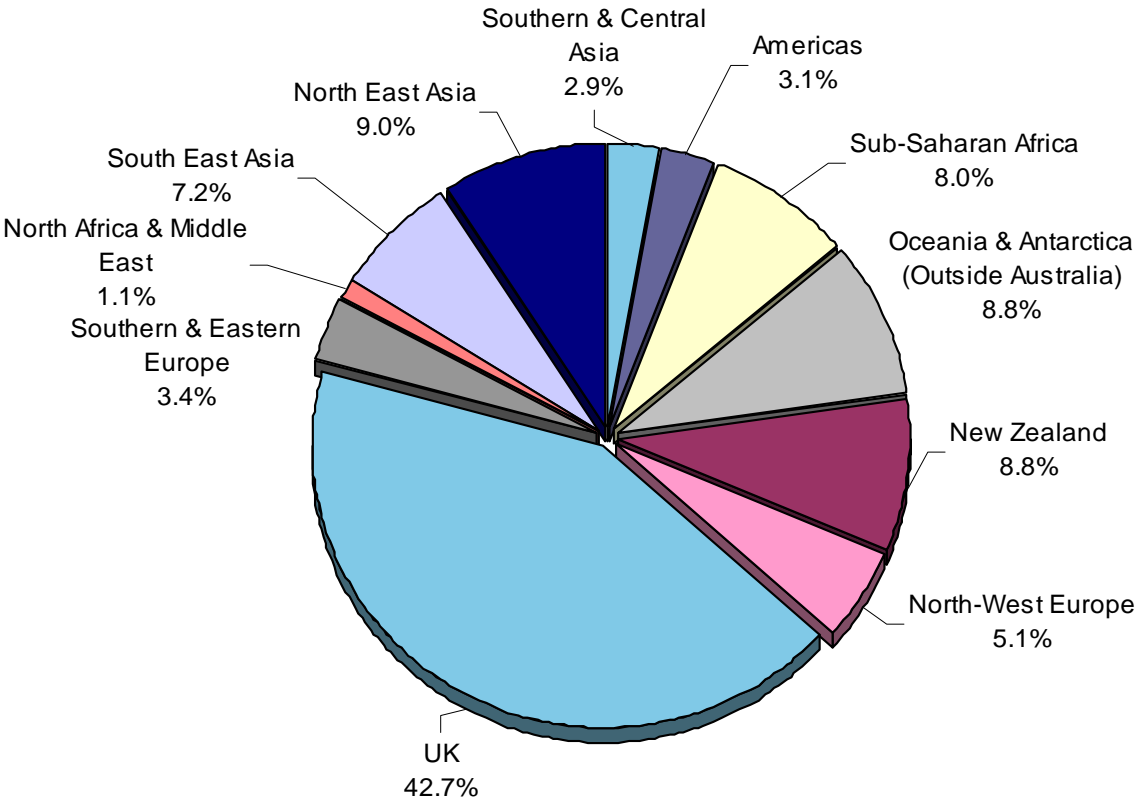
(1) Based on the Statistical Local Area (SLA) and is an Australian Standard Geographical Classification (ASGC) defined area. (Australian Bureau of Statistic (ABS), Statistical Geography Volume 1: Australian Standard Geographical Classification (ASGC) 2001 (cat. no. 1216.0))

Nursing Qualifications

In the 2007 Census Survey 80% registered or enrolled nurses/midwives indicated they had obtained their initial nursing qualification in Australia, of these 89% were trained in South Australia.

A further 10% registered or enrolled nurses/midwives obtained their initial qualification overseas, of which 26.6% obtaining their initial qualification in New Zealand, Oceania or North East Asia. The greatest percentage of enrolled nurses/midwives obtained their initial qualification in the United Kingdom and North-West Europe 48%.

Figure 7: Percentage of registered or enrolled nurses and midwives that obtain their qualification overseas by Standard Australian Classification of Countries (SACC), 2007 ⁽¹⁾



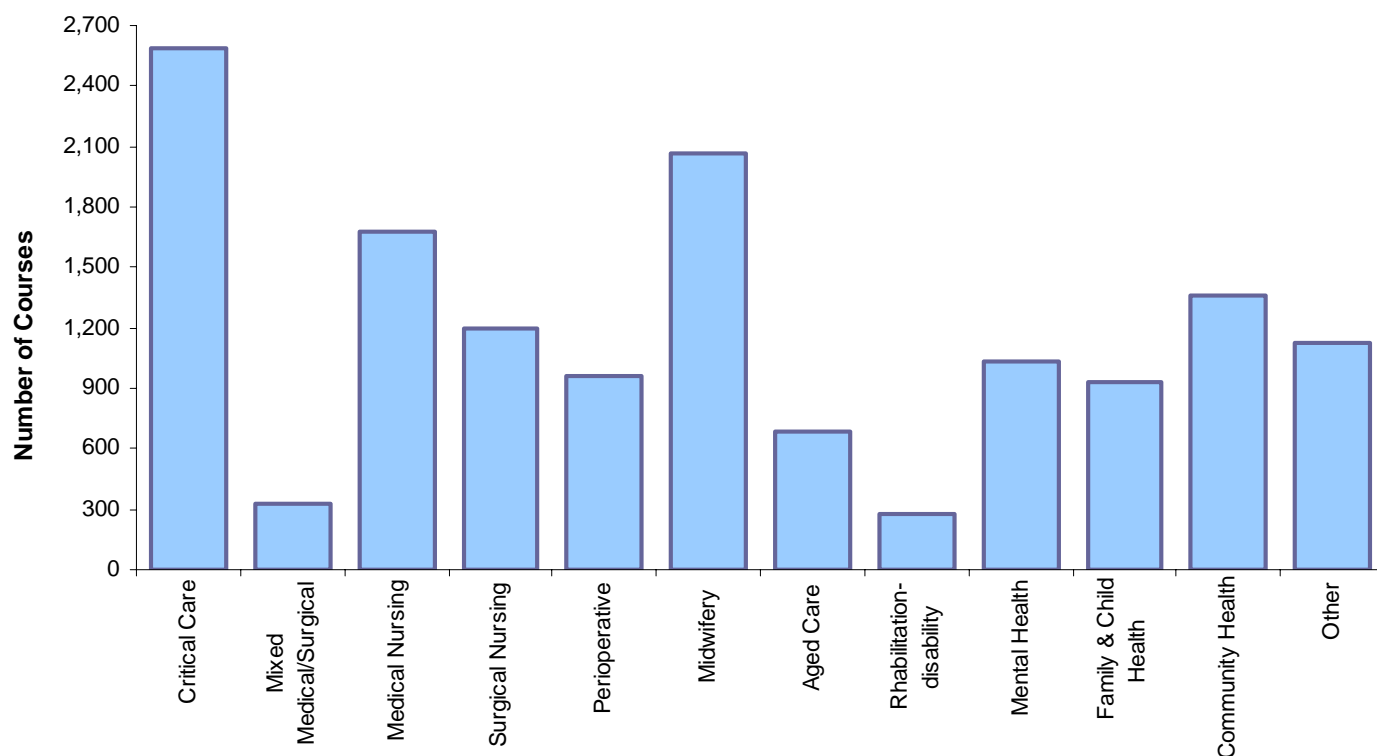
(1) Australian Bureau of Statistics (ABS); Standard Australian Classification of Countries (SACC) 1998 – Major Groups

73% registered or enrolled nurses/midwives indicated that they had completed formal post registration/enrolments courses during 2007.

37% registered or enrolled nurses/midwives indicated they had completed a post-registration or enrolment course, but did not indicate a field of study.

Of registered or enrolled nurses and midwives who had indicated their field of study, the majority had completed post-registration or enrolment courses in the fields of Critical Care (18%) and Midwifery (15%).

Figure 8: Number of completed post registration or enrolment courses of registered or enrolled nurses and midwives by field of study, 2007 ⁽¹⁾



(1) Excludes all respondents who did not indicate a field of study.

Table 12: Current qualifications of 2006-2007 Active Registrations and Enrolments with the Nurses Board of SA ⁽¹⁾

Active Qualifications	Qual 1	Qual 2	Qual 3	Qual 4	Total
Enrolled Nurse	6,516	46	2	0	6,564
General Nurse	17,642	2,969	196	17	20,824
Mental Health Nurse	735	744	227	17	1,723
Midwife	1,123	2,846	245	7	4,221
Nurse Practitioner	0	12	11	1	24
Total Qualifications	26,016	6,617	681	42	33,356

(1) Sourced Nurses Board of SA Active Registration and Enrolment Information, 2007

Area of Practice

The main area of practice of employed registered or enrolled nurses/midwives in South Australia was in critical care (17%), followed by activities classified as medical nursing (16%), aged care (11%) and surgical nursing (9%).

During 2007, 81% of registered or enrolled nurses and midwives were employed in only one main job, while 10% work a second job.

Of registered or enrolled nurses and midwives who were employed in only one main job 78% were employed on a permanent basis. While 71% of registered or enrolled nurses and midwives working a second job were employed on a casual basis.

A further 5% of registered or enrolled nurses and midwives were employed on fixed term or temporary contract, while 0.4% were employed in their own business or other type of employment.

62% of employed registered or enrolled nurses/midwives in South Australia were working in the public sector, 32% in the private sector, the status of 6% was unknown.

Table 13: All registered or enrolled nurses and midwives by employment sector, 2007
(1)

AIHW SA Census Data 2007	Public Sector	Private Sector
Enrolled Nurses	12%	7%
Direct Entry Midwives	1%	0%
Mothercraft Nurses	0%	0%
Registered Nurses	44%	22%
Authorised Midwife	10%	1%
Authorised Mental Health Nurse	5%	1%
Authorised Nurse Practitioner ⁽¹⁾	2%	0%
All Nurses	58%	29%

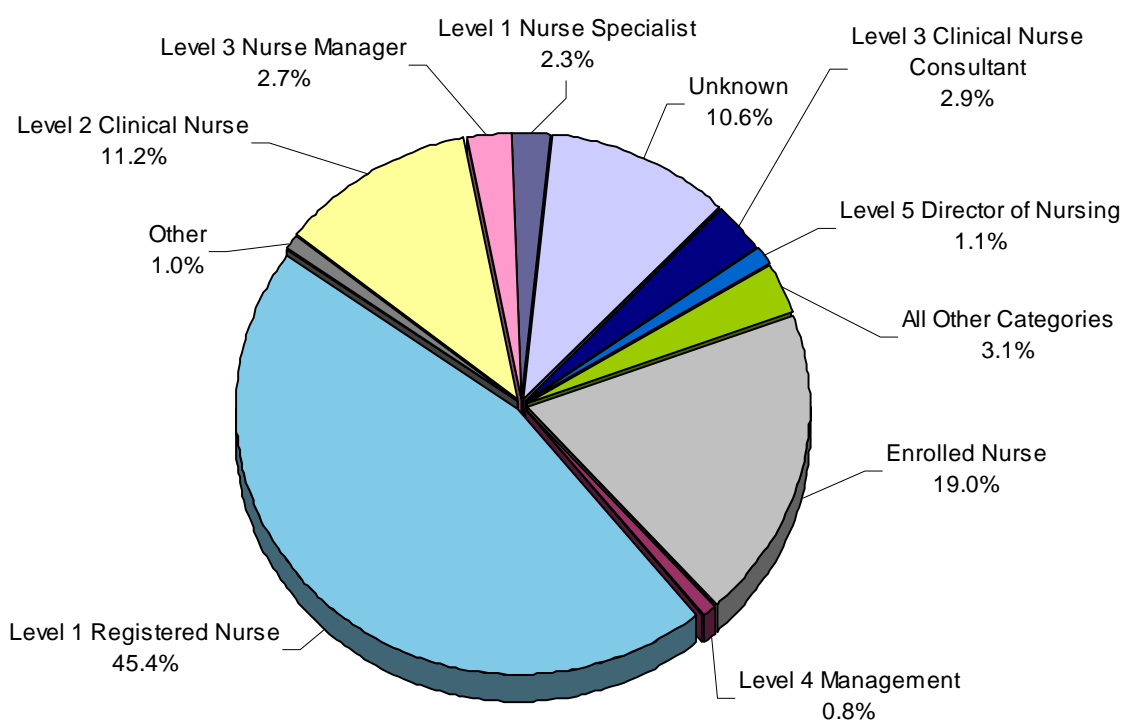
(1) The Nurse Board of SA information indicates there were 24 registered Nurse Practitioners in South Australia in 2007, however, 1,049 nurses responded 'yes' that they were currently practicing as a Nurse Practitioner. (Question 3c of the AIHW SA Census Data 2007)

During 2007, the majority (45%) of registered or enrolled nurses and midwives were employed in the Registered Nurse Level 1 (RNL1) Classification.

Table 14: Principal area of practice of all registered or enrolled nurses and midwives by main job, 2007 ⁽¹⁾

Principal Area	Main Job	2nd Job
Hospital	10,761	794
Residential aged care	2,292	312
Community health centre	881	99
Psychiatric hospital/mental health facility	672	45
GP's practice	468	95
Other residential care facility	251	55
Other	217	113
School	208	62
Day procedure centre	164	44
Outpatient clinic	162	20
Government department	138	17
Tertiary institution	119	31
Hospice	71	12
Commercial/industry/business	37	19
Defence force facility	22	10
Unknown/none	2,995	17,730
Total	19,458	19,458

Figure 9: Percentage of registered or enrolled nurses and midwives by classification of main job, 2007 ⁽¹⁾



Appendices

- A. Nursing Labour Force Summary Profiles
- B. Nursing and Midwifery Labour Force Census 2007, South Australia – Questionnaire Form
- C. Data Counting Rules

Appendix A: Nursing and Midwifery Labour Force Summary Profiles

Profile 1: Total Registered or Enrolled Nurses and Midwives, SA 2007

Profile 2: Total Enrolled Nurses, SA 2007

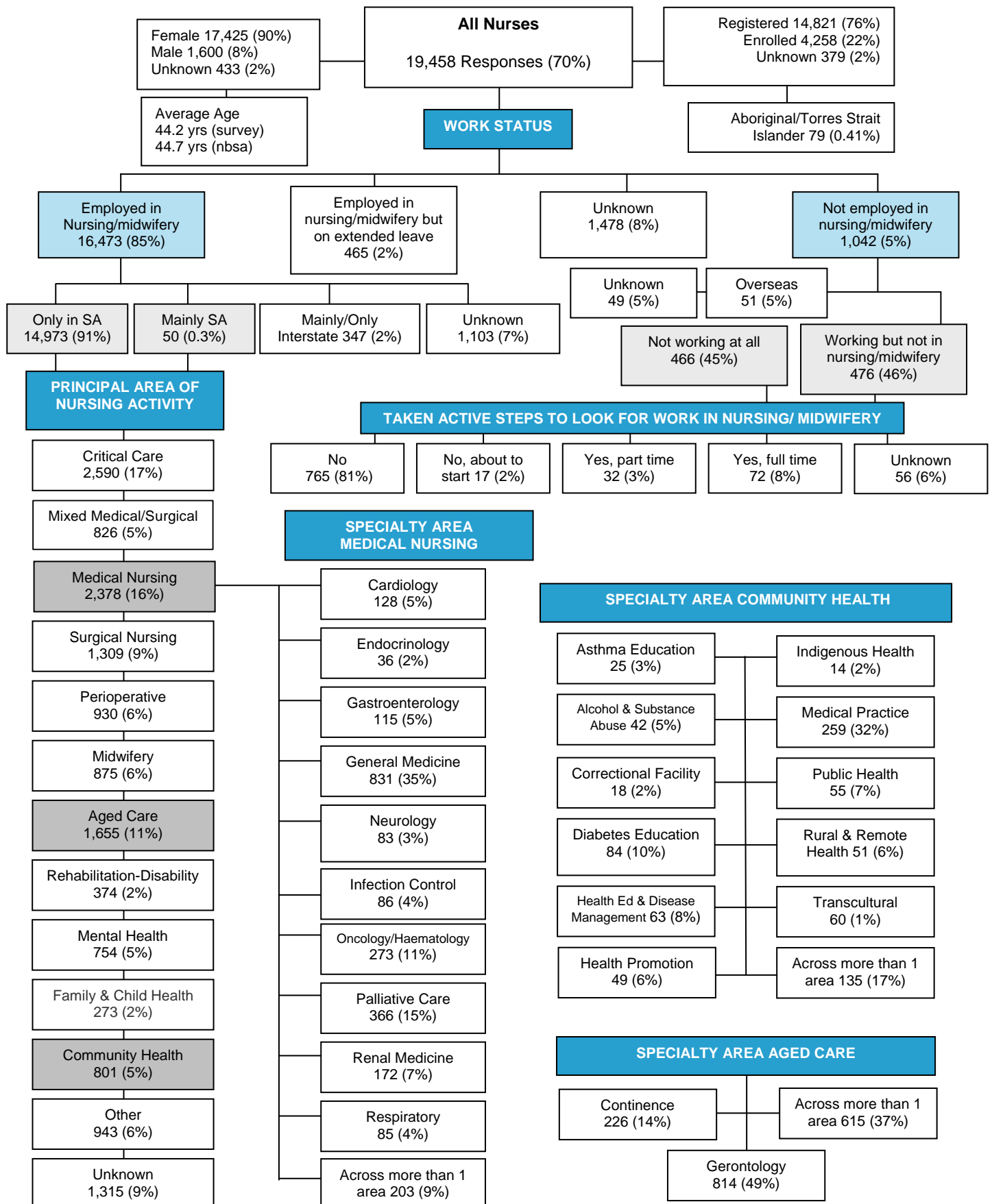
Profile 3: Total Registered Nurses, SA 2007

Profile 4: Total Authorised Registered Midwives and Direct Entry Midwives,
SA 2007

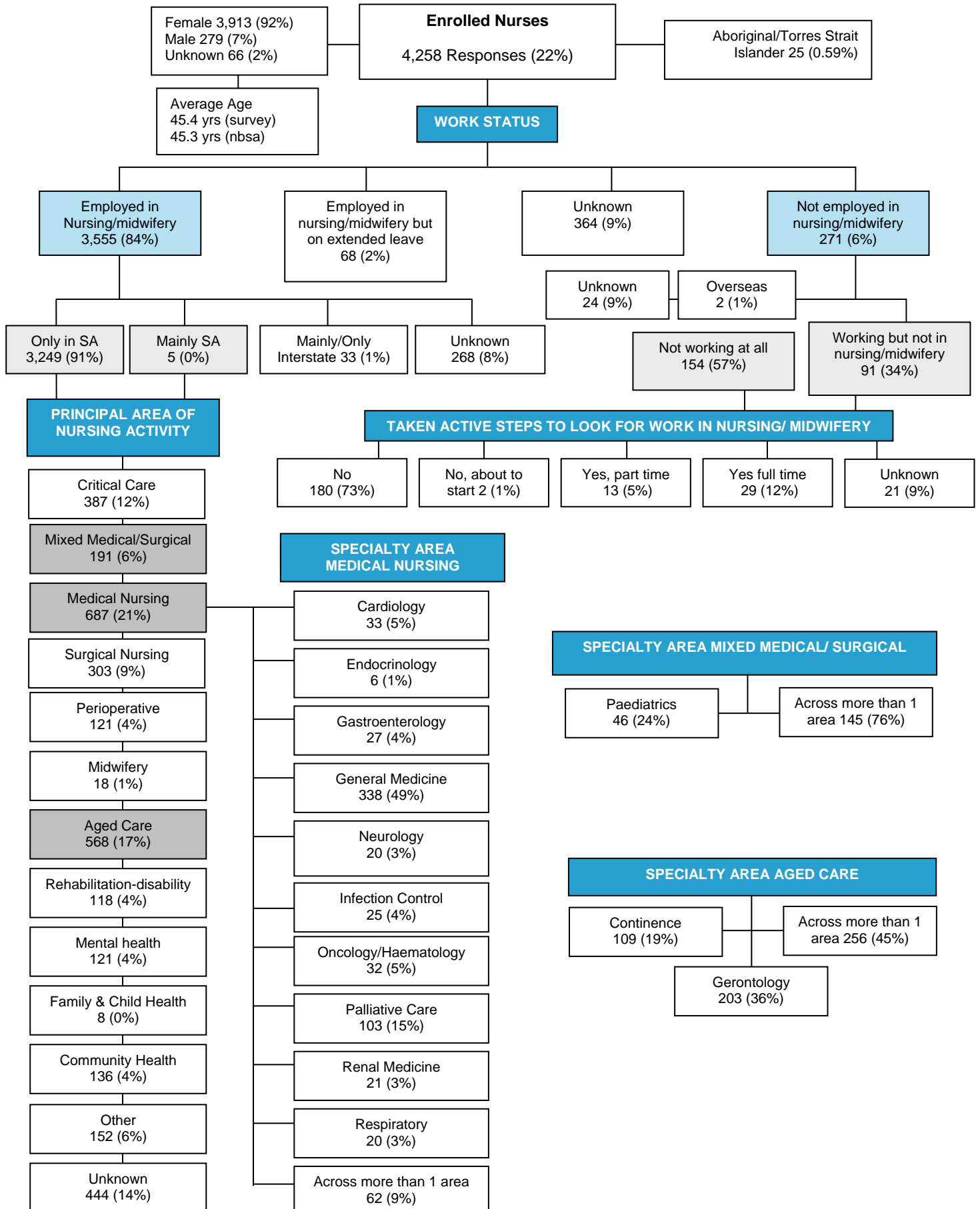
Profile 5: Total Authorised Psychiatric/Mental Health Nurses, SA 2007

Profile 6: Historical Profile, Total Registered and Enrolled Nurses, SA 2003
to 2007

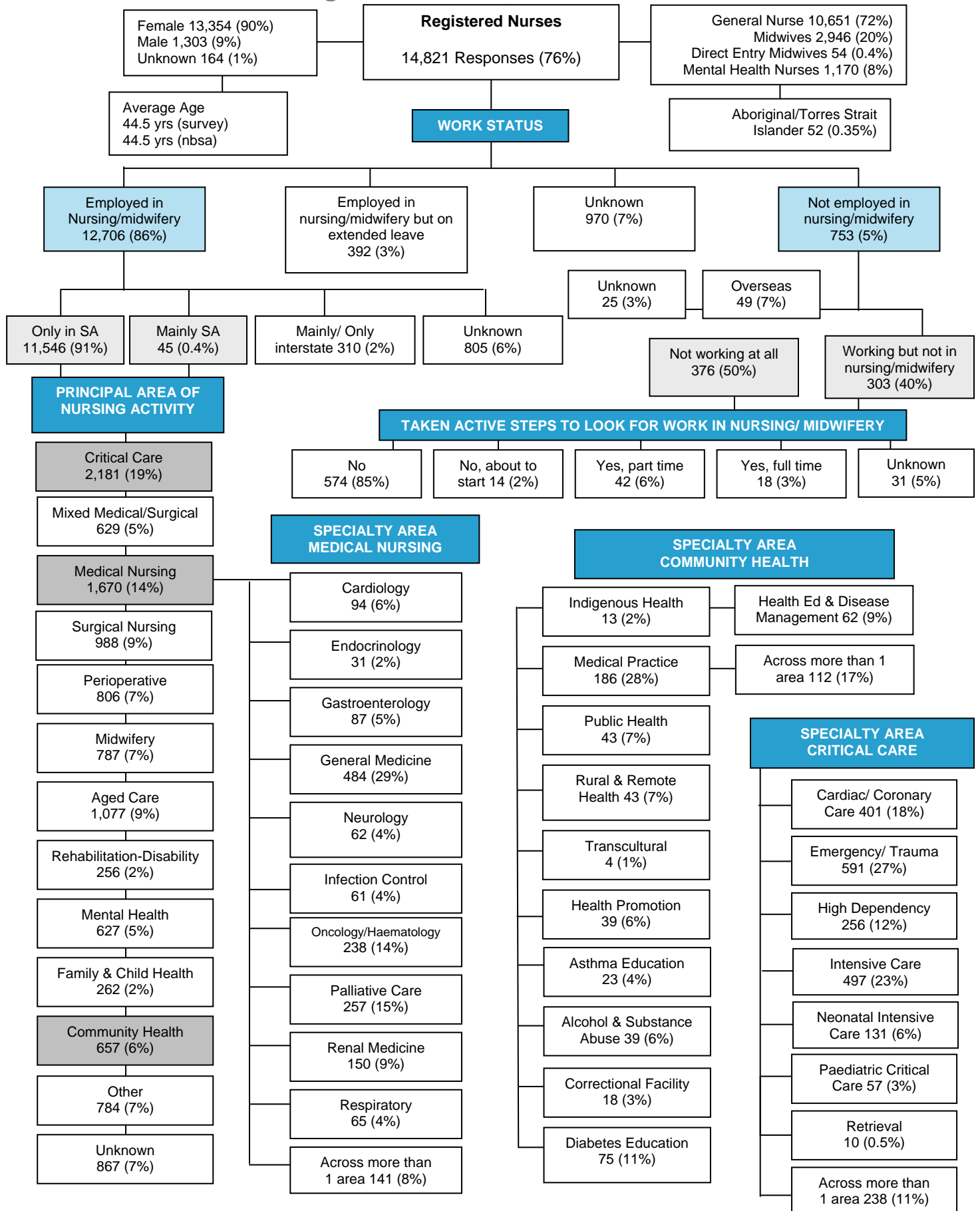
Profile 1: Total registered or enrolled nurses and midwives, South Australia 2007



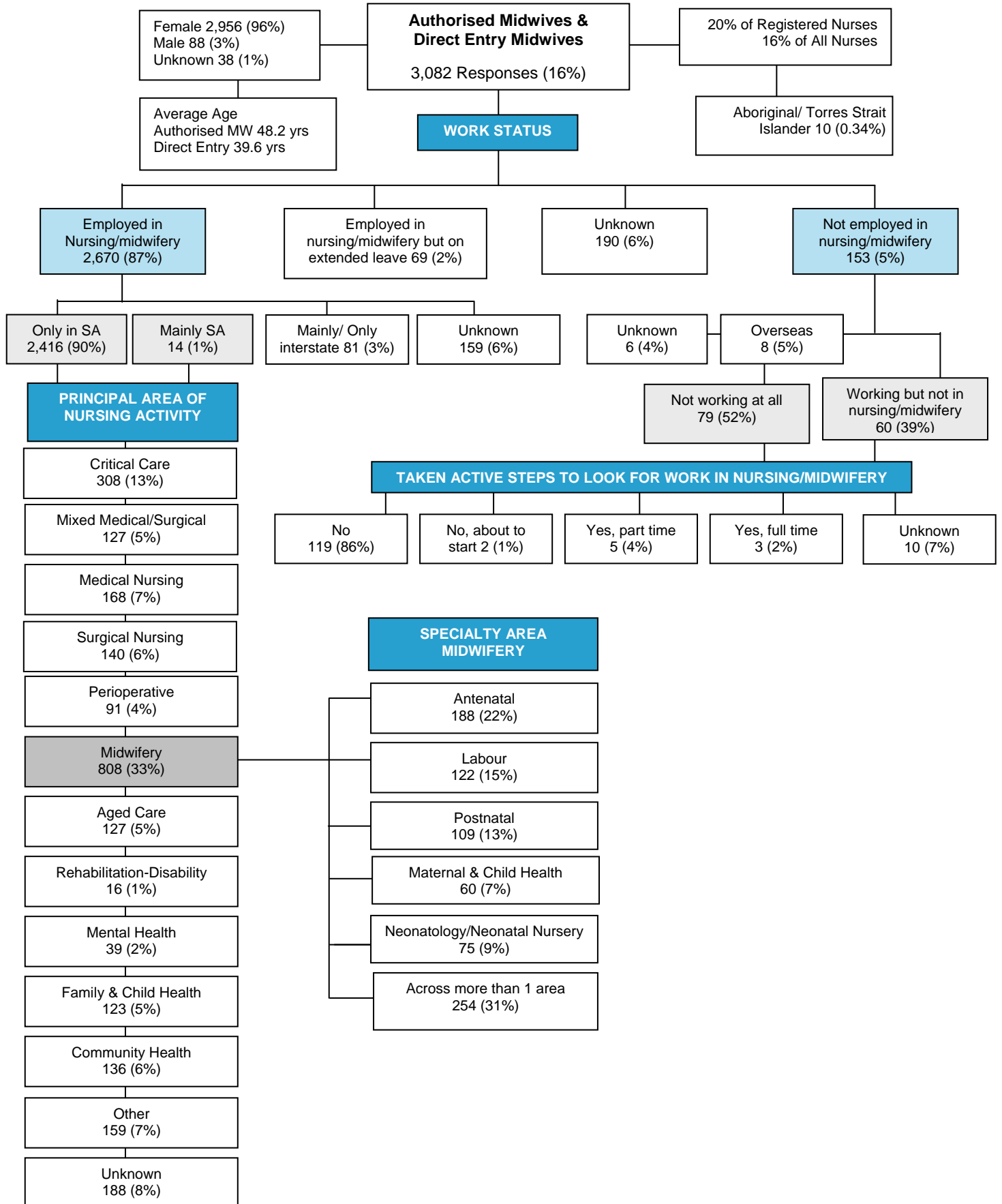
Profile 2: Total enrolled nurses, South Australia 2007



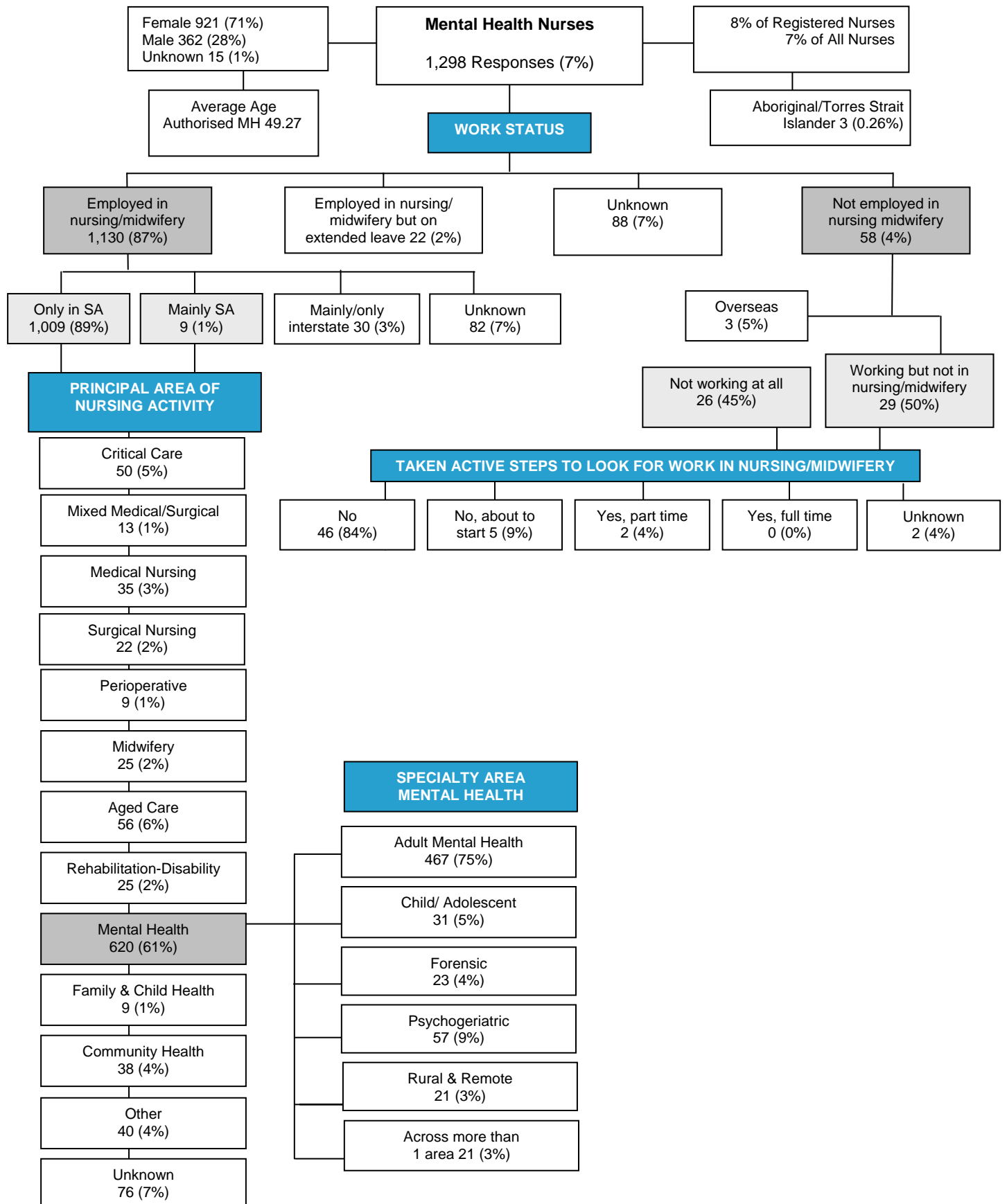
Profile 3: Total registered nurses, South Australia 2007



Profile 4: Total authorised registered midwives and direct entry midwives, South Australia 2007



Profile 5: Total authorised psychiatric/mental health nurses, South Australia 2007



Profile 6: Historical Profile, total registered or enrolled nurses and midwives, South Australia 2003 to 2007

	2003		2004		2005		2006		2007	
	No.	%	No.	%	No.	%	No.	%	No.	%
Survey Response Rates		75		74		72		69		70
Gender										
Female	16,714	92	16,938	91	17,130	93	16,719	91	17,425	90
Male	1,396	8	1,437	8	1,344	7	1,467	8	1,600	8
Unknown	134	1	170	1	0	0	197	1	433	2
Total Responses	18,244	100	18,545	100	18,474	100	18,383	100	19,458	100
Average Age (years)										
Survey Result		43.8		44.0		44.7		43.8		44.2
Nurses Board of SA		N/A		N/A		N/A		44.4		44.7
% Aboriginal/ Torres Strait Islander	43	0.24	51	0.28	50	0.27	61	0.33	79	0.41
Labour force Status										
Employed in Nursing ⁽¹⁾	15,638	86	16,155	87	16,049	87	16,481	90	16,473	85
Employed in Nursing on extended leave	391	2	323	2	277	1	392	2	465	2
Unknown	969	5	1,046	6	1,180	6	599	3	1,478	8
Not employed in Nursing	1,246	7	1,021	6	968	5	911	5	1,042	5
Total	18,244	100	18,545	100	18,474	100	18,383	100	19,458	100
Employed in Nursing/ Midwifery										
Only SA	15,271	98	15,197	94	15,574	97	15,891	96	14,973	91
Mainly SA	108	1	732	5	221	1	48	0.3	50	0.3
Mainly interstate	259	2	226	1	254	2	62	0.4	64	0.4
Only Interstate	N/A	N/A	N/A	N/A	N/A	N/A	270	2	283	2
Unknown	0	0	0	0	0	0	210	1	1,103	7
Total	15,638	100	16,155	100	16,049	100	16,481	100	16,473	100
Not Employed in Nursing										
Not working at all	542	43	436	43	423	44	439	48	466	45
Working, but not in nursing	587	47	462	45	411	42	411	45	476	46
Unknown	N/A	N/A	N/A	N/A	N/A	N/A	26	3	49	5
Overseas	117	9	123	12	134	14	35	4	51	5
Total	1,246	100	1,021	100	968	100	911	100	1,042	100
Taken Active Steps to Look for Work in Nursing										
No	710	63	612	68	561	67	717	84	765	81
About to start	41	4	44	5	36	4	18	2	17	2
Part-time	164	15	137	15	86	10	23	3	32	3
Full-time	19	2	41	5	25	3	70	8	72	8
Unknown	195	17	64	7	126	15	22	3	56	6
Total	1,129	100	898	100	834	100	850	100	942	100

	2003		2004		2005		2006		2007	
	No.	%	No.	%	No.	%	No.	%	No.	%
Principle Area of Practice of Employed Nursing/Midwives in South Australia										
Critical Care	1,344	9	1,404	9	1,435	9	2,276	14	2,590	17
Mixed Medical/ Surgical	N/A	N/A	N/A	N/A	N/A	N/A	658	4	826	5
Medical	2,429	16	2,530	16	2,442	15	2,062	13	2,378	16
Surgical	1,601	10	1,535	10	1,562	10	1,262	8	1,309	9
Perioperative	1,063	7	1,096	7	1,061	7	1,049	7	930	6
Midwifery	957	6	920	6	928	6	985	6	875	6
Aged Care	2,331	15	2,404	15	2,338	15	1,135	7	1,655	11
Rehab/ Disability	414	3	429	3	413	3	409	3	374	2
Mental Health	778	5	756	5	745	5	793	5	754	5
Family & Child Health	410	3	437	3	432	3	319	2	273	2
Community Health	913	6	952	6	949	6	833	5	801	5
Other	2,403	16	2,243	14	2,038	13	1,216	8	943	6
Unknown	736	5	1,223	8	1,452	9	2,942	18	1,315	9
Total	15,379	100	15,929	100	15,795	100	15,939	100	15,023	100
Specialty area of medical nursing principal area of practice										
Cardiology	202	8	252	10	232	10	144	7	128	5
Endocrinology	17	1	24	1	18	1	55	3	36	2
Gastroenterology	78	3	83	3	90	4	99	5	115	5
Medical	924	38	927	37	830	34	616	30	831	35
Neurology	38	2	58	2	68	3	85	4	83	3
Infection Control	N/A	N/A	N/A	N/A	N/A	N/A	84	4	86	4
Oncology/ Haematology	239	10	247	10	255	10	283	14	273	11
Palliative Care	174	7	156	6	164	7	305	15	366	15
Renal	151	6	151	6	165	7	178	9	172	7
Respiratory	80	3	102	4	84	3	72	3	85	4
Across more than 1 area	526	22	530	21	536	22	141	7	203	9
Total	2,429	100	2,530	100	2,442	100	2,062	100	2,378	100
Specialty area of community health principal area of practice										
Asthma Education	N/A	N/A	N/A	N/A	N/A	N/A	29	3	25	3
Alcohol & Substance Abuse	64	7	58	6	44	5	51	6	42	5
Correctional Facility	N/A	N/A	N/A	N/A	N/A	N/A	21	3	18	2
Diabetes Education	N/A	N/A	N/A	N/A	N/A	N/A	88	11	84	10
Health Education & Disease Management	65	7	56	6	72	8	48	6	63	8
Health Promotion	N/A	N/A	N/A	N/A	N/A	N/A	48	6	49	6
Indigenous Health	N/A	N/A	N/A	N/A	N/A	N/A	24	3	14	2
Medical Practice	N/A	N/A	N/A	N/A	N/A	N/A	247	30	259	32
Public Health	N/A	N/A	N/A	N/A	N/A	N/A	64	8	55	7
Rural & Remote	184	20	227	24	214	23	51	6	51	6
Transcultural	N/A	N/A	N/A	N/A	N/A	N/A	1	0	6	1
Across more than 1 area	N/A	N/A	N/A	N/A	N/A	N/A	161	19	135	17
Unknown	600	66	611	N/A	619	65	0	0	0	0
Total	913	100	952	36	949	100	833	100	801	100

(1) For consistency information prior to 2006 has been adjusted to reflect current reporting methodology.

(2) Due to the new survey questionnaire tool format, historical categories of some speciality areas are not available prior to 2006.

Appendix B: Nursing and Midwifery Labour Force Census 2007, South Australia – Census Form

Nursing & Midwifery Labour Force Census, 2007 South Australia

Along with the many other nurses and midwives who regularly respond to this survey, your cooperation in answering the following questions is needed because accurate information for workforce planning is so vital to your profession.

The information is being collected by the Department of Health (DH) with the cooperation of the Nurses Board of South Australia (NBSA). It does not form part of your application of renewal of Registration.

Your cooperation in completing this form will contribute to building an accurate picture of the nursing profession in South Australia (SA) and Australia. The SA data will be amalgamated with data from all States and Territories into a national data set by the Australian Institute (AIHW) to be used only for the purposes of national, state and regional planning.

The gathering of this data complies with the Privacy Act 1991. Your confidentiality is assured.

Queries regarding this census can be directed to (08) 8226 7013 or email health.WorkPlan@health.sa.gov.au
Previous Nurse labour force reports can be accessed at www.aihw.gov.au.

Please return your completed form to the Nurses Board of SA, PO Box 7106, Hutt St, Adelaide, SA 5000

NOTE: unless otherwise indicated, please use a black pen to answer the questions and place a cross inside the appropriate box , or print clearly where written answers are required

About your registration

<p>1. Are you registered or enrolled as a nurse or midwife in more than one state or territory of Australia?</p> <p>Yes <input type="checkbox"/> (please specify which ones) → SA <input type="checkbox"/> WA <input type="checkbox"/> NSW <input type="checkbox"/> TAS <input type="checkbox"/> VIC <input type="checkbox"/> NT <input type="checkbox"/> QLD <input type="checkbox"/> ACT <input type="checkbox"/></p> <p>No <input type="checkbox"/></p>	<p>6. For how many years since you <u>first</u> registered/enrolled have you worked as a nurse or midwife?</p> <p>Number of years <input type="text"/></p> <p><i>(i.e. the number of years worked, either full-time or part-time since you first registered/enrolled, excluding time spent not working as a nurse/midwife or unpaid leave)</i></p> <p>Answer to the nearest year.</p> <p>7. Sex Male <input type="checkbox"/> Female <input type="checkbox"/></p>
<p>2. Are you</p> <p>Please mark all relevant boxes</p> <p>a registered nurse? <input type="checkbox"/> an enrolled nurse? <input type="checkbox"/> a mothercraft nurse? <input type="checkbox"/> a 'direct-entry' midwife? <input type="checkbox"/></p>	<p>8. Year of birth <input type="text" value="19"/></p>
<p>3. Are you registered/endorsed/authorised by your board to practise as</p> <p>Please mark all relevant boxes</p> <p>a midwife? <input type="checkbox"/> a psychiatric/mental health nurse? <input type="checkbox"/> a nurse practitioner? <input type="checkbox"/></p>	<p>9. Are you of Aboriginal or Torres Strait Islander origin?</p> <p><i>(For persons of both Aboriginal and Torres Strait Islander origin, mark both 'yes' boxes)</i></p> <p>No <input type="checkbox"/> Yes, Aboriginal <input type="checkbox"/> Yes, Torres Strait Islander <input type="checkbox"/></p>
<p>4. Where did you receive your <u>first</u> nursing qualification (or, if a direct-entry midwife, your <u>first</u> midwifery qualification)?</p> <p>Australia <input type="checkbox"/> (please specify state) → <input type="text"/></p> <p>Overseas <input type="checkbox"/> (please specify country) ↓ <input type="text"/></p>	<p>10. Are you an Australian citizen?</p> <p><i>(Please mark one box only)</i></p> <p>Yes, Australian citizen <input type="checkbox"/> No, permanent resident <input type="checkbox"/> No, temporary resident <input type="checkbox"/></p>
<p>5. In what year did you <u>first</u> become a registered or enrolled nurse, or a 'direct-entry' midwife?</p> <p>In Australia ↓ <input type="text"/> In South Australia ↓ <input type="text"/></p>	<p>11. What is the postcode and location of your usual residence?</p> <p>Postcode in Australia <input type="text"/></p> <p>↓ Location in Australia (suburb/town) <input type="text"/></p> <p>↓ Country, if overseas <input type="text"/></p>

Your employment

12. **NOTE:** for the following questions, employed includes:
The practice of nursing/midwifery, or work that is principally concerned with those disciplines, eg research, administration or teaching of nursing/midwifery, in which you:

- worked in Australia for a total of one hour or more LAST WEEK in a job or business (including own business) for pay, commission, payment in kind or profit;
- usually work, but away from work on leave, on strike or locked out or rostered off.

13. LAST WEEK were you

Employed in nursing/midwifery? ... → Go to Q21

Employed in nursing/midwifery but on leave for less than 3 months? ... → Go to Q20

Employed in nursing/midwifery but on leave for 3 months or more?... → Go to Q20

Not employed in nursing/midwifery?... → Go to Q14

14. Last week were you

Working, but not at all in nursing/midwifery?

Not working at all?

Overseas?

15. In what year did you last work in nursing &/or midwifery?

Last year in nursing Last year in midwifery

Never worked in nursing Never worked in midwifery

16. LAST WEEK, did you take active steps to look for work in nursing or midwifery in Australia?

(Active steps include: applying for work in nursing or midwifery, enquiring about a job, answering an advertisement, registering with an employment agency, advertising for work or contacting people in the profession about a job.)

No

No, because about to start working in nursing/midwifery

Yes, looked for full-time work

Yes, looked for part-time work

17. Are you currently undertaking any post-registration or post-enrolment courses of study related to nursing or midwifery?

Include: hospital-based certificates and tertiary qualifications in nurse management or clinical practice

Exclude: in-service/continuing education sessions, refresher and re-entry courses or courses of less than 6 months' duration

Yes → Go to Q18

No → Go to Q19

18. In the space(s) below, please write the main field or subject of your current study (not the name of the course)

(a maximum of 2 courses, please.)

Main field/subject of course 1 currently being undertaken

Main field/subject of course 2 currently being undertaken

19. Have you completed any post-registration/enrolment courses of study related to nursing or midwifery?

Include: hospital-based certificates and tertiary qualifications in nurse management or clinical practice

Exclude: in-service/continuing education sessions, refresher or re-entry courses or courses of less than 6 months' duration

Yes → Go to Q35B on the last page and complete Column 3

No

There are no more questions. Thank you for your time

Please return this form to
Nurses Board of SA,
PO Box 7106, Hutt St, Adelaide, SA 5000

Your nursing/midwifery job last week

20. Please continue but answer all further questions only in respect of your usual job(s) in a typical week prior to your current leave, rather than 'LAST WEEK'.

21. In your job last week, did you work

Only in South Australia?

Mainly in South Australia, but also in another state(s)?

Mainly in another state(s)?

Only in another state(s)?

22. Have you returned to work in the last 12 months, after a period of unpaid absence?

Yes (please specify length of absence)
→ Years & Months

No

If you had more than 1 job last week in nursing/midwifery, please answer for both:
your **main job** (in which you worked the most hours) and
your **2nd job** (in which you worked the next most hours) where indicated in the following questions.

23. Select the category that best describes the principal place where you worked LAST WEEK

(For each job, please select only one box from those which apply in South Australia)

	Main job	2 nd job
Hospital ...	<input type="checkbox"/>	<input type="checkbox"/>
Psychiatric hospital/mental health facility ...	<input type="checkbox"/>	<input type="checkbox"/>
Outpatient clinic ...	<input type="checkbox"/>	<input type="checkbox"/>
Day procedure centre ...	<input type="checkbox"/>	<input type="checkbox"/>
Residential aged care centre ...	<input type="checkbox"/>	<input type="checkbox"/>
Hospice ...	<input type="checkbox"/>	<input type="checkbox"/>
Other residential care facility ...	<input type="checkbox"/>	<input type="checkbox"/>
Community health centre ...	<input type="checkbox"/>	<input type="checkbox"/>
Defence force facility ...	<input type="checkbox"/>	<input type="checkbox"/>
Government department ...	<input type="checkbox"/>	<input type="checkbox"/>
GP's practice ...	<input type="checkbox"/>	<input type="checkbox"/>
Specialist's rooms/practice ...	<input type="checkbox"/>	<input type="checkbox"/>
School ...	<input type="checkbox"/>	<input type="checkbox"/>
Commercial/industry/business ...	<input type="checkbox"/>	<input type="checkbox"/>
Tertiary institution ...	<input type="checkbox"/>	<input type="checkbox"/>
(higher education/vocational education/training)		
Other (Please specify) ...	<input type="checkbox"/>	<input type="checkbox"/>

If you did not work in one principal place, mark the category that describes the 'home base' of your job.

Your nursing/midwifery job last week (cont.)

<p>24. What was the postcode and location (suburb/town) of that place/home base of work?</p> <table style="width: 100%; border-collapse: collapse;"> <tr> <td style="width: 50%; text-align: center;"> Main job Postcode <input style="width: 100%;" type="text"/> Main job location (suburb/town) <input style="width: 100%;" type="text"/> </td> <td style="width: 50%; text-align: center;"> 2nd job Postcode <input style="width: 100%;" type="text"/> 2nd job location (suburb/town) <input style="width: 100%;" type="text"/> </td> </tr> </table> <p>25. In which sector was that place /home base of work?</p> <table style="width: 100%; border-collapse: collapse;"> <tr> <td style="width: 50%;"></td> <td style="width: 5%;"></td> <td style="width: 5%; text-align: center;">Main job</td> <td style="width: 5%;"></td> <td style="width: 5%; text-align: center;">2nd job</td> <td style="width: 5%;"></td> </tr> <tr> <td>Public</td> <td><input type="checkbox"/></td> <td></td> <td><input type="checkbox"/></td> <td></td> <td></td> </tr> <tr> <td>Private</td> <td><input type="checkbox"/></td> <td></td> <td><input type="checkbox"/></td> <td></td> <td></td> </tr> </table>	Main job Postcode <input style="width: 100%;" type="text"/> Main job location (suburb/town) <input style="width: 100%;" type="text"/>	2nd job Postcode <input style="width: 100%;" type="text"/> 2nd job location (suburb/town) <input style="width: 100%;" type="text"/>			Main job		2nd job		Public	<input type="checkbox"/>		<input type="checkbox"/>			Private	<input type="checkbox"/>		<input type="checkbox"/>			<p>30. Approximately <i>how many hours</i> did you work in your job(s) LAST WEEK?</p> <p><i>NB: generally, a full-time position is around 35-40 hours per week, depending on where you work</i></p> <table style="width: 100%; border-collapse: collapse;"> <tr> <td style="width: 50%;"></td> <td style="width: 5%;"></td> <td style="width: 5%; text-align: center;">Main job</td> <td style="width: 5%;"></td> <td style="width: 5%; text-align: center;">2nd job</td> <td style="width: 5%;"></td> </tr> <tr> <td style="text-align: center;">Number of Hours</td> <td></td> <td></td> <td></td> <td></td> <td></td> </tr> <tr> <td><i>Please answer to the nearest hour.</i></td> <td></td> <td></td> <td></td> <td></td> <td></td> </tr> <tr> <td>Regular hours worked at regular pay (incl. 'time off in lieu' of regular hours)</td> <td><input type="text"/></td> <td></td> <td><input type="text"/></td> <td></td> <td></td> </tr> <tr> <td>Hours worked above contract hours, but at regular hours pay</td> <td><input type="text"/></td> <td></td> <td><input type="text"/></td> <td></td> <td></td> </tr> <tr> <td>Hours of paid overtime worked (incl. 'time off in lieu' of overtime hours)</td> <td><input type="text"/></td> <td></td> <td><input type="text"/></td> <td></td> <td></td> </tr> <tr> <td>Unpaid hours worked (extra hours)</td> <td><input type="text"/></td> <td></td> <td><input type="text"/></td> <td></td> <td></td> </tr> <tr> <td>TOTAL number of HOURS</td> <td><input type="text"/></td> <td></td> <td><input type="text"/></td> <td></td> <td></td> </tr> </table>			Main job		2nd job		Number of Hours						<i>Please answer to the nearest hour.</i>						Regular hours worked at regular pay (incl. 'time off in lieu' of regular hours)	<input type="text"/>		<input type="text"/>			Hours worked above contract hours, but at regular hours pay	<input type="text"/>		<input type="text"/>			Hours of paid overtime worked (incl. 'time off in lieu' of overtime hours)	<input type="text"/>		<input type="text"/>			Unpaid hours worked (extra hours)	<input type="text"/>		<input type="text"/>			TOTAL number of HOURS	<input type="text"/>		<input type="text"/>																																				
Main job Postcode <input style="width: 100%;" type="text"/> Main job location (suburb/town) <input style="width: 100%;" type="text"/>	2nd job Postcode <input style="width: 100%;" type="text"/> 2nd job location (suburb/town) <input style="width: 100%;" type="text"/>																																																																																																						
		Main job		2nd job																																																																																																			
Public	<input type="checkbox"/>		<input type="checkbox"/>																																																																																																				
Private	<input type="checkbox"/>		<input type="checkbox"/>																																																																																																				
		Main job		2nd job																																																																																																			
Number of Hours																																																																																																							
<i>Please answer to the nearest hour.</i>																																																																																																							
Regular hours worked at regular pay (incl. 'time off in lieu' of regular hours)	<input type="text"/>		<input type="text"/>																																																																																																				
Hours worked above contract hours, but at regular hours pay	<input type="text"/>		<input type="text"/>																																																																																																				
Hours of paid overtime worked (incl. 'time off in lieu' of overtime hours)	<input type="text"/>		<input type="text"/>																																																																																																				
Unpaid hours worked (extra hours)	<input type="text"/>		<input type="text"/>																																																																																																				
TOTAL number of HOURS	<input type="text"/>		<input type="text"/>																																																																																																				
<p>26. Was your job</p> <table style="width: 100%; border-collapse: collapse;"> <tr> <td style="width: 50%;"></td> <td style="width: 5%;"></td> <td style="width: 5%; text-align: center;">Main job</td> <td style="width: 5%;"></td> <td style="width: 5%; text-align: center;">2nd job</td> <td style="width: 5%;"></td> </tr> <tr> <td>Permanent? ..</td> <td><input type="checkbox"/></td> <td></td> <td><input type="checkbox"/></td> <td></td> <td></td> </tr> <tr> <td>Casual? ..</td> <td><input type="checkbox"/></td> <td></td> <td><input type="checkbox"/></td> <td></td> <td></td> </tr> <tr> <td>Fixed term or temporary contract? ..</td> <td><input type="checkbox"/></td> <td></td> <td><input type="checkbox"/></td> <td></td> <td></td> </tr> <tr> <td>Own business or other? ..</td> <td><input type="checkbox"/></td> <td></td> <td><input type="checkbox"/></td> <td></td> <td></td> </tr> </table>			Main job		2nd job		Permanent? ..	<input type="checkbox"/>		<input type="checkbox"/>			Casual? ..	<input type="checkbox"/>		<input type="checkbox"/>			Fixed term or temporary contract? ..	<input type="checkbox"/>		<input type="checkbox"/>			Own business or other? ..	<input type="checkbox"/>		<input type="checkbox"/>			<p>31. Approximately <i>how many hours</i> did you spend LAST WEEK performing the following core roles?</p> <p><i>Include: paid and unpaid overtime</i></p> <table style="width: 100%; border-collapse: collapse;"> <tr> <td style="width: 50%;"></td> <td style="width: 5%;"></td> <td style="width: 5%; text-align: center;">Main job</td> <td style="width: 5%;"></td> <td style="width: 5%; text-align: center;">2nd job</td> <td style="width: 5%;"></td> </tr> <tr> <td style="text-align: center;">Number of Hours</td> <td></td> <td></td> <td></td> <td></td> <td></td> </tr> <tr> <td>Clinical nursing (direct patient care)</td> <td><input type="text"/></td> <td></td> <td><input type="text"/></td> <td></td> <td></td> </tr> <tr> <td>Clinical management and or nurse/midwifery administration /management (incl. meetings)</td> <td><input type="text"/></td> <td></td> <td><input type="text"/></td> <td></td> <td></td> </tr> <tr> <td>Lecturing, nurse/midwifery education, clinical education and/or supervising/supporting students/new nurses/midwives</td> <td><input type="text"/></td> <td></td> <td><input type="text"/></td> <td></td> <td></td> </tr> <tr> <td>Research</td> <td><input type="text"/></td> <td></td> <td><input type="text"/></td> <td></td> <td></td> </tr> <tr> <td>Other nursing/midwifery related activity</td> <td><input type="text"/></td> <td></td> <td><input type="text"/></td> <td></td> <td></td> </tr> <tr> <td>TOTAL HOURS (should equal total hours in Q30 above)</td> <td><input type="text"/></td> <td></td> <td><input type="text"/></td> <td></td> <td></td> </tr> </table>			Main job		2nd job		Number of Hours						Clinical nursing (direct patient care)	<input type="text"/>		<input type="text"/>			Clinical management and or nurse/midwifery administration /management (incl. meetings)	<input type="text"/>		<input type="text"/>			Lecturing, nurse/midwifery education, clinical education and/or supervising/supporting students/new nurses/midwives	<input type="text"/>		<input type="text"/>			Research	<input type="text"/>		<input type="text"/>			Other nursing/midwifery related activity	<input type="text"/>		<input type="text"/>			TOTAL HOURS (should equal total hours in Q30 above)	<input type="text"/>		<input type="text"/>																										
		Main job		2nd job																																																																																																			
Permanent? ..	<input type="checkbox"/>		<input type="checkbox"/>																																																																																																				
Casual? ..	<input type="checkbox"/>		<input type="checkbox"/>																																																																																																				
Fixed term or temporary contract? ..	<input type="checkbox"/>		<input type="checkbox"/>																																																																																																				
Own business or other? ..	<input type="checkbox"/>		<input type="checkbox"/>																																																																																																				
		Main job		2nd job																																																																																																			
Number of Hours																																																																																																							
Clinical nursing (direct patient care)	<input type="text"/>		<input type="text"/>																																																																																																				
Clinical management and or nurse/midwifery administration /management (incl. meetings)	<input type="text"/>		<input type="text"/>																																																																																																				
Lecturing, nurse/midwifery education, clinical education and/or supervising/supporting students/new nurses/midwives	<input type="text"/>		<input type="text"/>																																																																																																				
Research	<input type="text"/>		<input type="text"/>																																																																																																				
Other nursing/midwifery related activity	<input type="text"/>		<input type="text"/>																																																																																																				
TOTAL HOURS (should equal total hours in Q30 above)	<input type="text"/>		<input type="text"/>																																																																																																				
<p>27. Were you employed through or paid by an employment agency for your nursing/midwifery job LAST WEEK?</p> <table style="width: 100%; border-collapse: collapse;"> <tr> <td style="width: 50%;"></td> <td style="width: 5%;"></td> <td style="width: 5%; text-align: center;">Main job</td> <td style="width: 5%;"></td> <td style="width: 5%; text-align: center;">2nd job</td> <td style="width: 5%;"></td> </tr> <tr> <td>Yes</td> <td><input type="checkbox"/></td> <td></td> <td><input type="checkbox"/></td> <td></td> <td></td> </tr> <tr> <td>No</td> <td><input type="checkbox"/></td> <td></td> <td><input type="checkbox"/></td> <td></td> <td></td> </tr> </table>			Main job		2nd job		Yes	<input type="checkbox"/>		<input type="checkbox"/>			No	<input type="checkbox"/>		<input type="checkbox"/>			<p>32. Are you currently undertaking any post-registration or post-enrolment courses of study related to nursing or midwifery?</p> <p><i>Include: hospital-based certificates and tertiary qualifications in nurse management or clinical practice</i></p> <p><i>Exclude: in-service/continuing education sessions, refresher and re-entry courses or courses of less than 6 months' duration</i></p> <p>Yes <input type="checkbox"/> → Go to Q33</p> <p>No <input type="checkbox"/> → Go to Q34</p>																																																																																				
		Main job		2nd job																																																																																																			
Yes	<input type="checkbox"/>		<input type="checkbox"/>																																																																																																				
No	<input type="checkbox"/>		<input type="checkbox"/>																																																																																																				
<p>28. Which of the following best describes the type of care delivery in your job(s)?</p> <table style="width: 100%; border-collapse: collapse;"> <tr> <td style="width: 50%;"></td> <td style="width: 5%;"></td> <td style="width: 5%; text-align: center;">Main job</td> <td style="width: 5%;"></td> <td style="width: 5%; text-align: center;">2nd job</td> <td style="width: 5%;"></td> </tr> <tr> <td>In-patient ..</td> <td><input type="checkbox"/></td> <td></td> <td><input type="checkbox"/></td> <td></td> <td></td> </tr> <tr> <td>Outpatient ..</td> <td><input type="checkbox"/></td> <td></td> <td><input type="checkbox"/></td> <td></td> <td></td> </tr> <tr> <td>Both in-patient & outpatient ..</td> <td><input type="checkbox"/></td> <td></td> <td><input type="checkbox"/></td> <td></td> <td></td> </tr> <tr> <td>Residential ..</td> <td><input type="checkbox"/></td> <td></td> <td><input type="checkbox"/></td> <td></td> <td></td> </tr> <tr> <td>Community based ..</td> <td><input type="checkbox"/></td> <td></td> <td><input type="checkbox"/></td> <td></td> <td></td> </tr> <tr> <td>Developmental disability service ..</td> <td><input type="checkbox"/></td> <td></td> <td><input type="checkbox"/></td> <td></td> <td></td> </tr> <tr> <td>Aboriginal health service ..</td> <td><input type="checkbox"/></td> <td></td> <td><input type="checkbox"/></td> <td></td> <td></td> </tr> <tr> <td>Other clinical ..</td> <td><input type="checkbox"/></td> <td></td> <td><input type="checkbox"/></td> <td></td> <td></td> </tr> <tr> <td>Non-clinical nursing ..</td> <td><input type="checkbox"/></td> <td></td> <td><input type="checkbox"/></td> <td></td> <td></td> </tr> </table>			Main job		2nd job		In-patient ..	<input type="checkbox"/>		<input type="checkbox"/>			Outpatient ..	<input type="checkbox"/>		<input type="checkbox"/>			Both in-patient & outpatient ..	<input type="checkbox"/>		<input type="checkbox"/>			Residential ..	<input type="checkbox"/>		<input type="checkbox"/>			Community based ..	<input type="checkbox"/>		<input type="checkbox"/>			Developmental disability service ..	<input type="checkbox"/>		<input type="checkbox"/>			Aboriginal health service ..	<input type="checkbox"/>		<input type="checkbox"/>			Other clinical ..	<input type="checkbox"/>		<input type="checkbox"/>			Non-clinical nursing ..	<input type="checkbox"/>		<input type="checkbox"/>			<p>33. In the space(s) below, please write the main field or subject of your current study (not the name of the course) (a maximum of 2 courses, please.)</p> <p>Main field/subject of course 1 currently being undertaken</p> <input style="width: 100%; height: 20px;" type="text"/> <p>Main field/subject of course 2 currently being undertaken</p> <input style="width: 100%; height: 20px;" type="text"/>																																										
		Main job		2nd job																																																																																																			
In-patient ..	<input type="checkbox"/>		<input type="checkbox"/>																																																																																																				
Outpatient ..	<input type="checkbox"/>		<input type="checkbox"/>																																																																																																				
Both in-patient & outpatient ..	<input type="checkbox"/>		<input type="checkbox"/>																																																																																																				
Residential ..	<input type="checkbox"/>		<input type="checkbox"/>																																																																																																				
Community based ..	<input type="checkbox"/>		<input type="checkbox"/>																																																																																																				
Developmental disability service ..	<input type="checkbox"/>		<input type="checkbox"/>																																																																																																				
Aboriginal health service ..	<input type="checkbox"/>		<input type="checkbox"/>																																																																																																				
Other clinical ..	<input type="checkbox"/>		<input type="checkbox"/>																																																																																																				
Non-clinical nursing ..	<input type="checkbox"/>		<input type="checkbox"/>																																																																																																				
<p>29. Select the category that best describes the classification or level of your job LAST WEEK</p> <p><i>(Please tick only one box for each job)</i></p> <table style="width: 100%; border-collapse: collapse;"> <tr> <td style="width: 50%;"></td> <td style="width: 5%;"></td> <td style="width: 5%; text-align: center;">Main job</td> <td style="width: 5%;"></td> <td style="width: 5%; text-align: center;">2nd job</td> <td style="width: 5%;"></td> </tr> <tr> <td>Enrolled Nurse ..</td> <td><input type="checkbox"/></td> <td></td> <td><input type="checkbox"/></td> <td></td> <td></td> </tr> <tr> <td>Level 1 Registered Nurse or Midwife ..</td> <td><input type="checkbox"/></td> <td></td> <td><input type="checkbox"/></td> <td></td> <td></td> </tr> <tr> <td>Level 1 Nurse or Midwife Specialist ..</td> <td><input type="checkbox"/></td> <td></td> <td><input type="checkbox"/></td> <td></td> <td></td> </tr> <tr> <td>Level 2 Clinical Nurse or Midwife ..</td> <td><input type="checkbox"/></td> <td></td> <td><input type="checkbox"/></td> <td></td> <td></td> </tr> <tr> <td>Level 3 Nurse Practitioner ..</td> <td><input type="checkbox"/></td> <td></td> <td><input type="checkbox"/></td> <td></td> <td></td> </tr> <tr> <td>Level 3 Clinical Nurse or Midwife Consultant ..</td> <td><input type="checkbox"/></td> <td></td> <td><input type="checkbox"/></td> <td></td> <td></td> </tr> <tr> <td>Level 3 Nurse/Midwife Manager ..</td> <td><input type="checkbox"/></td> <td></td> <td><input type="checkbox"/></td> <td></td> <td></td> </tr> <tr> <td>Level 3 Staff Development/Education ..</td> <td><input type="checkbox"/></td> <td></td> <td><input type="checkbox"/></td> <td></td> <td></td> </tr> <tr> <td>Level 4 Clinical ..</td> <td><input type="checkbox"/></td> <td></td> <td><input type="checkbox"/></td> <td></td> <td></td> </tr> <tr> <td>Level 4 Management ..</td> <td><input type="checkbox"/></td> <td></td> <td><input type="checkbox"/></td> <td></td> <td></td> </tr> <tr> <td>Level 4 Staff Development/Education ..</td> <td><input type="checkbox"/></td> <td></td> <td><input type="checkbox"/></td> <td></td> <td></td> </tr> <tr> <td>Level 5 Director of Nursing and/or Midwifery ..</td> <td><input type="checkbox"/></td> <td></td> <td><input type="checkbox"/></td> <td></td> <td></td> </tr> <tr> <td>Higher Education or TAFE Lecturer ..</td> <td><input type="checkbox"/></td> <td></td> <td><input type="checkbox"/></td> <td></td> <td></td> </tr> <tr> <td>Professor/Academic ..</td> <td><input type="checkbox"/></td> <td></td> <td><input type="checkbox"/></td> <td></td> <td></td> </tr> <tr> <td>Non-nursing Award ..</td> <td><input type="checkbox"/></td> <td></td> <td><input type="checkbox"/></td> <td></td> <td></td> </tr> <tr> <td>Other (Please specify) ..</td> <td><input type="checkbox"/></td> <td></td> <td><input type="checkbox"/></td> <td></td> <td></td> </tr> </table> <p><input style="width: 100%; height: 20px;" type="text"/></p> <p><input style="width: 100%; height: 20px;" type="text"/></p>			Main job		2nd job		Enrolled Nurse ..	<input type="checkbox"/>		<input type="checkbox"/>			Level 1 Registered Nurse or Midwife ..	<input type="checkbox"/>		<input type="checkbox"/>			Level 1 Nurse or Midwife Specialist ..	<input type="checkbox"/>		<input type="checkbox"/>			Level 2 Clinical Nurse or Midwife ..	<input type="checkbox"/>		<input type="checkbox"/>			Level 3 Nurse Practitioner ..	<input type="checkbox"/>		<input type="checkbox"/>			Level 3 Clinical Nurse or Midwife Consultant ..	<input type="checkbox"/>		<input type="checkbox"/>			Level 3 Nurse/Midwife Manager ..	<input type="checkbox"/>		<input type="checkbox"/>			Level 3 Staff Development/Education ..	<input type="checkbox"/>		<input type="checkbox"/>			Level 4 Clinical ..	<input type="checkbox"/>		<input type="checkbox"/>			Level 4 Management ..	<input type="checkbox"/>		<input type="checkbox"/>			Level 4 Staff Development/Education ..	<input type="checkbox"/>		<input type="checkbox"/>			Level 5 Director of Nursing and/or Midwifery ..	<input type="checkbox"/>		<input type="checkbox"/>			Higher Education or TAFE Lecturer ..	<input type="checkbox"/>		<input type="checkbox"/>			Professor/Academic ..	<input type="checkbox"/>		<input type="checkbox"/>			Non-nursing Award ..	<input type="checkbox"/>		<input type="checkbox"/>			Other (Please specify) ..	<input type="checkbox"/>		<input type="checkbox"/>			<p>34. Have you completed any post-registration/enrolment courses of study relating to nursing or midwifery?</p> <p><i>Include: hospital-based certificates and tertiary qualifications in nurse management or clinical practice</i></p> <p><i>Exclude: in-service/continuing education sessions, refresher or re-entry courses or courses of less than 6 months' duration</i></p> <p>Yes <input type="checkbox"/> please go to Q35A and Q35B on the next page for directions to record your 'area of practice' (columns 1 & 2) & your 'study field(s)' (column 3) → Go to Q35A & 35B</p> <p>No <input type="checkbox"/> please go to Q35A on the next page for directions to record your 'area of practice' in your job(s) (columns 1 & 2). Ignore column 3 → Go to Q35A</p>
		Main job		2nd job																																																																																																			
Enrolled Nurse ..	<input type="checkbox"/>		<input type="checkbox"/>																																																																																																				
Level 1 Registered Nurse or Midwife ..	<input type="checkbox"/>		<input type="checkbox"/>																																																																																																				
Level 1 Nurse or Midwife Specialist ..	<input type="checkbox"/>		<input type="checkbox"/>																																																																																																				
Level 2 Clinical Nurse or Midwife ..	<input type="checkbox"/>		<input type="checkbox"/>																																																																																																				
Level 3 Nurse Practitioner ..	<input type="checkbox"/>		<input type="checkbox"/>																																																																																																				
Level 3 Clinical Nurse or Midwife Consultant ..	<input type="checkbox"/>		<input type="checkbox"/>																																																																																																				
Level 3 Nurse/Midwife Manager ..	<input type="checkbox"/>		<input type="checkbox"/>																																																																																																				
Level 3 Staff Development/Education ..	<input type="checkbox"/>		<input type="checkbox"/>																																																																																																				
Level 4 Clinical ..	<input type="checkbox"/>		<input type="checkbox"/>																																																																																																				
Level 4 Management ..	<input type="checkbox"/>		<input type="checkbox"/>																																																																																																				
Level 4 Staff Development/Education ..	<input type="checkbox"/>		<input type="checkbox"/>																																																																																																				
Level 5 Director of Nursing and/or Midwifery ..	<input type="checkbox"/>		<input type="checkbox"/>																																																																																																				
Higher Education or TAFE Lecturer ..	<input type="checkbox"/>		<input type="checkbox"/>																																																																																																				
Professor/Academic ..	<input type="checkbox"/>		<input type="checkbox"/>																																																																																																				
Non-nursing Award ..	<input type="checkbox"/>		<input type="checkbox"/>																																																																																																				
Other (Please specify) ..	<input type="checkbox"/>		<input type="checkbox"/>																																																																																																				

Your area of practice & your post-registration/enrolment study

35A. For the area of practice in your job(s), mark one principal area & one specialty area for each job. For 'Main job' mark column 1 next to the categories best describing your activity and, if applicable, mark column 2 for your '2nd job'.

35B. For study courses mark all subjects/fields studied (not the course name) in column 3 next to the categories best describing the principal & specialty study areas.

	Column 1 Main job	Column 2 2 nd job	Column 3 Study field		Column 1 Main job	Column 2 2 nd job	Column 3 Study field
Critical care/emergency				Aged care			
Cardiac/Coronary care	↓	↓	↓	Continence	↓	↓	↓
Emergency/trauma	↓	↓	↓	Gerontology	↓	↓	↓
High dependency	↓	↓	↓	Other/across more than one area	↓	↓	↓
Intensive care	↓	↓	↓	Rehabilitation-disability			
Neonatal intensive care	↓	↓	↓	Disability	↓	↓	↓
Paediatric critical care	↓	↓	↓	Rehabilitation	↓	↓	↓
Retrieval	↓	↓	↓	Developmental disability	↓	↓	↓
Other/across more than one area	↓	↓	↓	Other/across more than one area	↓	↓	↓
Mixed medical/surgical				Mental Health			
Paediatrics	↓	↓	↓	Adult mental health	↓	↓	↓
Other/across more than one area	↓	↓	↓	Child & adolescent mental health	↓	↓	↓
Medical nursing				Forensic	↓	↓	↓
Cardiology	↓	↓	↓	Psycho-geriatric	↓	↓	↓
Endocrinology	↓	↓	↓	Rural and remote mental health	↓	↓	↓
Gastroenterology	↓	↓	↓	Other/across more than one area	↓	↓	↓
Neurology	↓	↓	↓	Family & child health			
Infection control	↓	↓	↓	Family planning	↓	↓	↓
Oncology/haematology	↓	↓	↓	Family, youth & child health	↓	↓	↓
Palliative care	↓	↓	↓	Infertility & assisted reproduction	↓	↓	↓
Renal medicine/nephrology	↓	↓	↓	Lactation and infant feeding	↓	↓	↓
Respiratory	↓	↓	↓	Men's health	↓	↓	↓
General Medical nursing	↓	↓	↓	Paediatric & child health	↓	↓	↓
Other/across more than one area	↓	↓	↓	School health	↓	↓	↓
Surgical nursing				Sexual health	↓	↓	↓
Burns & plastics	↓	↓	↓	Women's health	↓	↓	↓
Cardiothoracic	↓	↓	↓	Other/across more than one area	↓	↓	↓
Ear, nose & throat	↓	↓	↓	Community health			
Gastro-intestinal	↓	↓	↓	Asthma education & management	↓	↓	↓
Neurosurgical	↓	↓	↓	Alcohol & substance abuse	↓	↓	↓
Ophthalmology	↓	↓	↓	Correctional facility nursing	↓	↓	↓
Orthopaedic	↓	↓	↓	Diabetes education & management	↓	↓	↓
Gynaecology	↓	↓	↓	Health education/disease management	↓	↓	↓
Urology	↓	↓	↓	Health promotion	↓	↓	↓
Vascular	↓	↓	↓	Indigenous health	↓	↓	↓
Wound management	↓	↓	↓	Medical practice nurse	↓	↓	↓
General surgical nursing	↓	↓	↓	Public health	↓	↓	↓
Other/across more than one area	↓	↓	↓	Rural & remote health	↓	↓	↓
Perioperative				Transcultural nursing	↓	↓	↓
Anaesthetic	↓	↓	↓	Other/across more than one area	↓	↓	↓
Perioperative	↓	↓	↓	Other			
Recovery	↓	↓	↓	Nurse education (incl. clinical)	↓	↓	↓
Other/across more than one area	↓	↓	↓	Pathology/laboratory	↓	↓	↓
Midwifery				Policy	↓	↓	↓
Antenatal	↓	↓	↓	Research	↓	↓	↓
Labour	↓	↓	↓	No one area of practice	↓	↓	↓
Maternal & child health	↓	↓	↓	Other (Please specify)	↓	↓	↓
Neonatology/neonatal nursery	↓	↓	↓		↓	↓	↓
Postnatal	↓	↓	↓		↓	↓	↓
Other/across more than one area	↓	↓	↓		↓	↓	↓

Thank you very much for your time. Please return this form to the Nurses Board of SA, PO Box 7106, Hutt St, Adelaide, SA 5000

Appendix C: Data counting rules

Total Registered or enrolled nurses and midwives: Includes all persons who responded to the census at 2007.

Registered Nurse: Includes all persons who responded 'Yes' to question 2a.

Enrolled Nurse: Includes all persons who responded 'Yes' to question 2b.

Authorised Registered Midwife or Direct Entry Midwife: includes all persons who responded 'Yes' to questions 2a or 2d and yes to 3a.

Authorised Mental Health Nurse: Includes all persons who responded 'Yes' to questions 2a and yes to 3b.

Employed registered or enrolled nurses and midwives in South Australia: Includes all persons who responded to Question 13, 'Employed in Nursing/Midwifery' and 'employed in Nursing/ Midwifery but on leave for less than 3 months'; of these respondents those who also responded to Question 21 'Working only in South Australia' and 'Working mainly in South Australia'.

Employed registered or enrolled nurses and midwives: Includes all persons who responded to Question 13, 'Employed in Nursing/Midwifery' and 'employed in Nursing/Midwifery but on leave for less than 3 months' regardless of main location of job.

Aboriginal/Torres Strait Islander: A respondent is defined as being Aboriginal and/or Torres Strait Islander, if they responded to question 9, as either 'Yes' Aboriginal or 'Yes' Torres Strait Islander or selected both.

The above rules also apply to following questions when reporting Aboriginal/Torres Strait Islander into registered, enrolled, authorised registered midwife, direct entry midwife and registered mental health nurses.

Location of initial nursing qualification: Includes all persons who responded to Question 4, separated into jurisdictions and regional areas.

Years since first registration/enrolment: Includes all persons who responded to Question 6.

Average age: Is the average number of years, between the survey date and the year of birth (Question 8) of all persons who responded, separated into nursing categories.

Australian citizenship: Includes all persons who responded 'Yes' to Question 10.

Geographical location of usual residence and main job: based the four digit postcode of all persons who responded to Question 11 and Question 24.

Completed a post-registration or enrolment course by field of study: Includes all persons who responded 'Yes' to Question 34 by study field column 3, Question 35b.

Public and Private sectors: Includes all persons who responded to Question 25.

Employment Status: Includes all persons who responded to Question 26.

Employment Agency Nurses: % of all persons who responded 'Yes' to Question 27.

Average hours worked per week: Average hours worked of all persons who responded to Question 30, by core role (all persons who responded to Question 31).

Classification or level of job: Includes all persons who responded to Question 29.

Principal area of practice: Includes all persons who responded to Question 35a part 1.

Specialty area of practice: Includes all persons who responded to Question 35a part 2.