

---

**SOUTH AUSTRALIAN**

**2006**

**AIHW NURSING & MIDWIFERY LABOUR FORCE CENSUS**

**STATISTICS PROFILE**

---

*JANUARY 2007*



**Government of South Australia**

Department of Health

**Department of Health, Workforce Planning Unit – Nursing & Midwifery Labour  
Force Census 2006 AIHW Census Statistics Profile**

Created in December 2006

Last printed 18-Apr-07

**Prepared by:**

Julie Wallis

Senior Project Officer, Workforce Planning & Analysis,  
Workforce Planning Unit, Workforce Development

**Any enquiries about or comments on this publication should be directed to:**

Workforce Planning Unit

Workforce Development

Department of Health

PO Box 287

Rundle Mall

Adelaide SA 5000

DX243

Email: [health.workplandev@health.sa.gov.au](mailto:health.workplandev@health.sa.gov.au)

Ph: 8226 7013

## CONTENTS

<b>List of Profiles .....</b>	<b>4</b>
<b>List of Graphs.....</b>	<b>4</b>
<b>List of Tables.....</b>	<b>4</b>
<b>Explanatory Notes .....</b>	<b>5</b>
Purpose .....	5
Caution regarding the use of census data .....	5
Background.....	5
Census Form .....	5
Scope and Coverage .....	6
Methodology .....	7
Collection Timing .....	7
Response Rate .....	7
Data comments.....	7
<b>Summary of Nurse Responses .....</b>	<b>10</b>
<b>Appendices.....</b>	<b>13</b>
Appendix A: Nursing & Midwifery Labour Force Census 2006 South Australia – census form .....	14
Appendix C: Nursing and Midwifery Labour Force Summary Profiles.....	20
Appendix D: Demographics .....	28
Appendix E: Nursing Qualifications.....	31
Appendix F: Nurse & Midwife employment patterns .....	32

## List of Profiles

Profile 1 - Total registered and enrolled nurses, SA 2006.....	21
Profile 2 - Total enrolled nurses SA 2006 .....	22
Profile 3 - Total registered nurses SA 2006 .....	22
Profile 4 - Total authorised midwives, SA 2006.....	24
Profile 5 - Total authorised psychiatric / mental health nurses SA 2006 .....	25
Profile 6 - Total registered and enrolled nurses, SA 2003 - 2006.....	26

## List of Graphs

Graph 1 - Age Profile of Nurses .....	28
Graph 2 - Average Age per Type of Nurse .....	28
Graph 3 - Nurse Average Age by Classification of Main Job .....	29
Graph 4 - Average years worked since 1st registered/enrolled as a nurse in Australia.....	29
Graph 5 - Year of initial nurse registration/enrolment in SA .....	30
Graph 6 - Overseas – country regions where 1 <sup>st</sup> nursing qualification was received .....	31
Graph 7 - Completed Post Registration/Enrolment Nursing Courses .....	31

## List of Tables

Table 1: Census Response Rate by year: 2001-2006 .....	6
Table 2: 30 <sup>th</sup> June 2003-2006 Active nbsa Nurse Registrations .....	6
Table 3: Calculation of the 2006 Census Response Rate.....	7
Table 4: nbsa SA Educated Nurses & Midwives Registered or Enrolled .....	30
Table 5: Postcode of usual residence .....	30
Table 6: Average hours worked per week as a nurse .....	32
Table 7: Average hours worked per core nursing role per week .....	32
Table 8: Employment sector .....	32
Table 9: Principal place of work .....	33
Table 11: Geographical Location of main job.....	34

## Explanatory Notes

### PURPOSE

The purpose of this publication is to present the results of the South Australian component of the Australian Institute of Health and Welfare (AIHW) Annual Nursing and Midwifery Labour Force Census which was distributed by the Nurses' Board of South Australia (nbsa) in collaboration with the Department of Health (DH) to all nurses renewing their registration certificates in 2006.

### CAUTION REGARDING THE USE OF CENSUS DATA

It is important to recognise that the data are drawn from a census with a substantial non-response rate, rather than from a survey of a randomly selected sample of the nurse population. Thus, the validity of extrapolating results to the whole nurse population is not clear. It is possible that the characteristics of the non-responding nurse population are significantly different from those of the nurse respondents and so extrapolation particularly with respect to small sub groups of the nurse population may be of doubtful validity.

It should also be noted that there has been a substantial reduction in response rate over time from 83% in 2001 to 69 % in 2006. This suggests that historical comparisons using census data are unlikely to be reliable.

### BACKGROUND

South Australia (SA) was one of the first states in Australia to initiate annual nursing surveys. The Annual Nursing Survey (ANS) was implemented in 1980 as part of a joint South Australian Health Commission and Nurses' Board of South Australia Nursing Manpower Project. From 1994, the ANS was incorporated into a national collection. Current nursing census collections are done in conjunction with AIHW and the data is shared.

While there is a notable time lag between the year of census data collection and the publication of AIHW reports ([www.aihw.gov.au](http://www.aihw.gov.au)), the Department utilises the South Australian component of the AIHW raw data and routinely produces a more timely annual report on the South Australian nursing workforce (<http://in.health.sa.gov.au/workforceplanning/DesktopDefault.aspx>).

### CENSUS FORM

In 2002, under the direction of the Australian Health Ministers Advisory Council (AHMAC), the Australian Health Workforce Officials Committee (AHWOC) undertook a review of the AIHW census data requirements. In 2003, a new survey tool was distributed with the intention of defining a national minimum data set. The result was a four page census questionnaire (previous surveys were 2 pages).

In 2006 a new format of the census form was distributed in SA to align with the national format (Appendix A). The introduction of the new format may have contributed to the decline in response rate from 72% in 2005 to 69% for 2006 (Table 1).

Table 1 shows that the 2006 census response rate has dropped about 15% with respect to that of the 2002 census.

**Table 1: Census Response Rate by year: 2001-2006**

Year	Profile of Census Response Rates
2001	83%
2002	84%
2003*	75%
2004	74%
2005	72%
2006**	69%

\*denotes introduction of new census tool

\*\*denotes introduction of new format census form

This return rate drop warrants ongoing monitoring. A national evaluation of the census tool was undertaken in 2004 and the new format in 2006.

South Australia will continue to take action to minimise any potential decrease in the census response by promoting the nursing and midwifery labour force census in the nbsa Bulletin.

## SCOPE AND COVERAGE

The Nursing and Midwifery Labour Force Census was conducted in conjunction with the annual registration and enrolment renewal process in South Australia. It incorporated all active status nurses and midwives renewing their registration, new registrations and those reinstated as stated on the register or roll as of the 30<sup>th</sup> June 2006.

**Table 2: 30<sup>th</sup> June 2003-2006 Active nbsa Nurse Registrations**

30 <sup>th</sup> June	Active NBSA Registrations			
	2003	2004	2005	2006
All Nurses	24,530	25,364	25,951	26,921
Enrolled Nurses	5,811	6,218	6,343	6,484
General Nurses	18,719	19,146	19,555	20,082
Midwives	4,404	4,486	4,468	4,306
Mental Health Nurses	1,685	1,721	1,739	1,715
Nurse Practitioners	2	5	9	18

It should be noted that nurses with both general and enrolled qualifications are considered to be registered nurses. A nurse's ability to hold dual registration/enrolment with the nbsa stopped with the introduction of the Nurses Act of 1999.

## METHODOLOGY

A census questionnaire was attached to the notice of renewal (with return paid envelope) and sent to each registered and enrolled nurse on the current register of the nbsa in association with the annual process of the renewal of nursing registration and enrolment. Respondents completed the census with information about their usual working situation at that time.

Strict procedures were followed to ensure the privacy of individual nurses and midwives who responded to the census. Census information is not made available in any format that enables the identification of individual respondents.

## COLLECTION TIMING

The nbsa implements a common annual renewal date. Collection timing was the 31<sup>st</sup> August 2006.

## RESPONSE RATE

The census response rate was determined by the number of returned census forms divided by the number of distributed census forms. Out of the 26,921 nurses registered with the nbsa (as of 30<sup>th</sup> June 2006), 74 nurses sought early registration and a further 352 nurses had invalid mailing addresses and so did not receive a census form.

For the purposes of determining a response rate, the 26,569 nurses with a valid mailing address was taken as the denominator. Data processing was completed by early December 2006 with 18,383 returned forms processed.

**Table 3: Calculation of the 2006 Census Response Rate**

Number of processed Census Forms	18,383
Number of distributed Census Forms	26,569
Response rate	69%

## DATA COMMENTS

### Data has not been adjusted for non response

The census data used in this publication has not been adjusted for non-response. When interpreting the findings of the report consideration should be given to the impact of unknown data. In particular, the fact that the workforce characteristics of the non-respondents may differ from the characteristics of the respondents must be taken into account. Weighting of the census data according to non-response alone may result in an over or under estimation in some categories

## Data Issues

In 2006 there were substantial changes to the census questionnaire. These changes included increased complexity to the structure and presentation of some questions. The interpretation of census terminology by respondents has also contributed to data inconsistency.

The following survey questions are examples of these data issues:

- *Description of classification or level of current job*  
Question 3c – Are you authorised by your board to practice as a Nurse Practitioner?

The census data for 2006 indicates 1,057 nurses responded yes to this question.

*And* Question 29 - Select the category that best describes the classification or level of your job last week.

This question had a response of 65 to Level 3 Nurse Practitioner.

However, nbsa information indicates 18 Nurse Practitioners are currently registered.

- *Employment in nursing/midwifery*  
Question 13 addresses employment in the last week. Question 13a is then linked to question 21 asking for place of employment.

The scope defining employed in nursing or midwifery has been narrowed to exclude working overseas. Previous Nursing and Midwifery Census forms categorised working overseas in nursing or midwifery as employed in nursing or midwifery. Previous census forms provided an estimation of the percentage of nurses in our labourforce working overseas however the 2006 census form does not collect this data.

- *Current studies in post-registration or post-enrolment courses*  
Question 32 – Are you currently undertaking any post-registration or post-enrolment courses of study related to nursing or midwifery?  
Linked to Question 32 is Question 33, where respondents are asked to enter their main field or subject.

The percentage of respondents to question 32 decreased 14 % from the 2005 Census. The 2006 response rate was 10%.

Previous census forms asked respondents to choose from a list of coded courses of study. The 2006 Census asked for the post-registration/enrolment main field or subject, not course of study. This change in the question's data collection purpose from study course to study field or subject has meant that the data is not fit for purpose of comparison to previous years.

- *Completed studies in post-registration or post-enrolment courses*  
Question 34 – Have you completed any post-registration or post-enrolment courses of study related to nursing or midwifery?  
Linked to Question 34 is Question 35b, asking about the respondent's post-registration/enrolment study subjects/fields not study course.

The response to question 34 decreased 2% from the 2005 Census.  
The 2006 response rate was 40%.

The percentage of respondents to question 35b decreased 31% from the 2005 Census. The 2006 response rate was 11%.

- *Principal area of Practice*  
Question 35 – (a) Employment area of practice and specialty area, and (b) post-registration/enrolment study subjects/fields.

The increased complexity to the structure and presentation of this question to address area of practice and post-registration/enrolment study field at the same time has resulted in an increase in the number of respondents returning an “unknown” result to principal area of nursing activity.

The percentage of respondents recording unknown as their principal area of nursing activity increased 41% from the 2005 Census. The 2006 response rate recording unknown as their principal area of nursing was 48%.

- *Age Profile of Nurses (Graph 1)*  
The nbsa data was used in the Age Profile of Nurses. This data was considered to be more accurate than the Census data which identified some nurses as under 15 years of age.

## **Data Entry**

In 2006, data processing arrangements continued with the contractor used in 2005. The 2005 contractor was appointed by national agreement whereby AIHW Nursing and Midwifery Labour Force Census forms from all jurisdictions were processed by a central data processing company.

Up until 2004, South Australia controlled its own data entry process where data was entered manually with double entry including error checking to ensure accuracy of data input. The new arrangement involved the implementation of a different technique in which the census forms were scanned and data was cleaned and edited by the data processing company.

This change may have influenced data which involved interpretation of hand written responses.

## **Rounding**

In addition, it should be noted that the percentages in the tables and graphs in this publication may not necessarily add up to 100% in all instances as rounding up may have occurred.

## **Counting Rules**

For a description of the data counting rules applied to the census data, refer to Appendix B.

## **Summary of Nurse Responses**

### **NURSING LABOUR FORCE PROFILES – 2006** *(Appendix C)*

- 23% of nurses were Enrolled Nurses (EN).
- 77 % of nurses were Registered Nurses (RN).
- 21% of nurses were authorised to practice as Midwives or Direct Entry Midwives.
- 4.5% of nurses were authorised to practice as Mental Health Nurses.

## **DEMOGRAPHICS (APPENDIX C, APPENDIX D)**

- The female:male ratio for nurses was 91% female:8% male, 1% did not respond.
- Average age of a nurse was:
  - 45 years old (2005 nbsa data)
  - 44 years old (2006 AIHW Census data)
- Average years worked as a nurse since first registration/enrolment in Australia was 18yrs.
- 91% of nurses were Australian citizens.
- 0.33% of nurses were Aboriginal / Torres Strait Islander origin and increase of .06 from 2005.
- 71% of nurses usual place of residence was within the Adelaide metropolitan area.

## **NURSING QUALIFICATIONS (APPENDIX E)**

- 81% of nurses obtained their initial nursing qualification in Australia
- Of the nurses who received their initial nursing qualification in Australia, 72% of these were South Australian trained.
- 8% of nurses obtained their initial qualification overseas, 56% were from the United Kingdom and North-West Europe.
- 40% of nurses indicated that they had completed formal post basic nursing courses. Preferred fields of completed study were Critical Care and Midwifery.

## **NURSE & MIDWIFE EMPLOYMENT PATTERNS (APPENDIX C, APPENDIX F)**

- 86% of nurses were employed in nursing and midwifery.
- Of the nurses employed in nursing/midwifery, 98% were working only in South Australia.
- 5% of nurses were not employed in nursing/midwifery, of these, 8% nurses were looking for part time work in nursing and 3% nurses were looking for full time work in nursing
- Average hours worked per week was 28 hrs this is equivalent to 56hrs /fortnight / approximately 0.68 FTE.
- Core role of nurses was clinical nursing practice.
- Principal area of activity was “Aged Care” (2,038) followed by activities classified as “Mixed Medical/Surgical” (1,565) and “Critical Care” (1,172). Note this question had a 35% drop in the response rate from 2005, 48% (8,819) respondents did not complete this question.
- 4.5% of nurses returned to work in the last 12 month after a period of unpaid leave. The average time of unpaid leave from nursing was 16 months.
- 60% of nurses were employed in the public sector and 30% of nurses worked in the private sector, 10% were unknown.
- Principal place of work was the hospital setting.
- The predominant nurse classification for main job was RN Level 1.
- 78% of nurses worked in one main job only, with 10% of these nurses working a second job.
- Of the nurses working in one main job only, 78% worked as permanent employees.
- Of the nurses working a second job, 23% of this work was as a casual employee.
- 6 % of nurses indicated they where employed under a fixed term or temporary contract and 0.5% in own business or other type of employment.
- Nursing Agencies were the principal employer for 7% of nurses while 22% of nurses working a 2<sup>nd</sup> job worked for a Nursing Agency.
- The majority of nurses worked in the Adelaide metropolitan area.

## Appendices

- A.** Nursing & Midwifery Labour Force Census 2006 South Australia – census form
- B.** Data Counting Rules
- C.** Nursing Labour Force Summary Profiles
- D.** Demographics
- E.** Nursing Qualifications
- F.** Nurse & Midwife Employment Patterns

# APPENDIX A: NURSING & MIDWIFERY LABOUR FORCE CENSUS 2006 SOUTH AUSTRALIA – CENSUS FORM

## Nursing & Midwifery Labour Force Census, 2006, South Australia

The following information is being collected by the Department of Health (DH) with the cooperation of the Nurses Board of South Australia (NBSA). It does not form part of your application of renewal of Registration.

Your cooperation in completing this form will contribute to building an accurate picture of the nursing profession in South Australia (SA) and Australia. The SA data will be amalgamated with data from all States and Territories into a national data set by the Australian Institute (AIHW) to be used only for the purposes of national, state and regional planning.

The gathering of this data complies with the Privacy Act 1991. Your confidentiality is assured.

Queries regarding this census can be directed to (08) 8226 7013 or email [health.WorkPlan@health.sa.gov.au](mailto:health.WorkPlan@health.sa.gov.au)

Previous Nurse labour force reports can be accessed at [www.aihw.gov.au](http://www.aihw.gov.au).

Please return your completed form to the Nurses Board of SA, PO Box 7106, Hutt St, Adelaide, SA 5000

NOTE: unless otherwise indicated, please use a black pen to answer the questions and place a cross inside the appropriate box , or print clearly where written answers are required

### About your registration

<p><b>1. Are you registered or enrolled as a nurse or midwife in more than one state or territory of Australia?</b></p> <p>Yes <input type="checkbox"/> (please specify which ones) → SA <input type="checkbox"/> WA <input type="checkbox"/> NSW <input type="checkbox"/> TAS <input type="checkbox"/> No <input type="checkbox"/> VIC <input type="checkbox"/> NT <input type="checkbox"/> QLD <input type="checkbox"/> ACT <input type="checkbox"/></p>	<p><b>6. For how many years since you first registered/enrolled have you worked as a nurse or midwife?</b></p> <p>Number of years <input type="text"/></p> <p><i>(i.e. the number of years worked, either full-time or part-time since you first registered/enrolled, excluding time spent not working as a nurse/midwife on unpaid leave)</i></p> <p><i>Answer to the nearest year.</i></p>
<p><b>2. Are you</b></p> <p><i>Please mark all relevant boxes</i></p> <p>a registered nurse? <input type="checkbox"/> an enrolled nurse? <input type="checkbox"/> a mothercraft nurse? <input type="checkbox"/> a 'direct-entry' midwife? <input type="checkbox"/></p>	<p><b>7. Sex</b></p> <p>Male <input type="checkbox"/> Female <input type="checkbox"/></p>
<p><b>3. Are you registered/endorsed/authorised by your board to practise as</b></p> <p><i>Please mark all relevant boxes</i></p> <p>a midwife? <input type="checkbox"/> a psychiatric/mental health nurse? <input type="checkbox"/> a nurse practitioner? <input type="checkbox"/></p>	<p><b>8. Year of birth</b></p> <p><input type="text"/> <input type="text"/> <input type="text"/> <input type="text"/></p>
<p><b>4. Where did you receive your first nursing qualification (or, if a direct-entry midwife, your first midwifery qualification)?</b></p> <p>Australia <input type="checkbox"/> (please specify state) → <input type="text"/></p> <p>Overseas <input type="checkbox"/> (please specify country) → <input type="text"/></p>	<p><b>9. Are you of Aboriginal or Torres Strait Islander origin?</b></p> <p><i>(For persons of both Aboriginal and Torres Strait Islander origin, mark both 'yes' boxes)</i></p> <p>No <input type="checkbox"/> Yes, Aboriginal <input type="checkbox"/> Yes, Torres Strait Islander <input type="checkbox"/></p>
<p><b>5. In what year did you first become a registered or enrolled nurse, or a 'direct-entry' midwife?</b></p> <p>In Australia <input type="text"/> In South Australia <input type="text"/></p>	<p><b>10. Are you an Australian citizen?</b></p> <p><i>(Please mark one box only)</i></p> <p>Yes, Australian citizen <input type="checkbox"/> No, permanent resident <input type="checkbox"/> No, temporary resident <input type="checkbox"/></p>
<p><b>11. What is the postcode and location of your usual residence?</b></p> <p>Postcode in Australia <input type="text"/></p> <p>Location in Australia (suburb/town) <input type="text"/></p> <p>Country, if overseas <input type="text"/></p>	

## Your employment

12. **NOTE:** for the following questions, employed includes:  
The practice of nursing/midwifery, or work that is principally concerned with those disciplines, eg research, administration or teaching of nursing/midwifery, in which you:

- worked in Australia for a total of one hour or more LAST WEEK in a job or business (including own business) for pay, commission, payment in kind or profit;
- usually work, but away from work on leave, on strike or locked out or rostered off.

13. LAST WEEK were you

- Employed in nursing/midwifery? ...  → Go to Q21
- Employed in nursing/midwifery but on leave for less than 3 months? ...  → Go to Q20
- Employed in nursing/midwifery but on leave for 3 months or more?...  → Go to Q20
- Not employed in nursing/midwifery?...  → Go to Q14

14. Last week were you

- Working, but not at all in nursing/midwifery?
- Not working at all?
- Overseas?

15. In what year did you last work in nursing &/or midwifery?

- Last year in nursing  Last year in midwifery
- Never worked in nursing  Never worked in midwifery

16. LAST WEEK, did you take active steps to look for work in nursing or midwifery in Australia?

(Active steps include: applying for work in nursing or midwifery, enquiring about a job, answering an advertisement, registering with an employment agency, advertising for work or contacting people in the profession about a job.)

- No
- No, because about to start working in nursing/midwifery
- Yes, looked for full-time work
- Yes, looked for part-time work

17. Are you currently undertaking any post-registration or post-enrolment courses of study related to nursing or midwifery?

Include: hospital-based certificates and tertiary qualifications in nurse management or clinical practice

Exclude: in-service/continuing education sessions, refresher and re-entry courses or courses of less than 6 months' duration

- Yes  → Go to Q18
- No  → Go to Q19

18. In the space(s) below, please write the main field or subject of your current study (not the name of the course)

(a maximum of 2 courses, please.)

Main field/subject of course 1 currently being undertaken

Main field/subject of course 2 currently being undertaken

19. Have you completed any post-registration/enrolment courses of study related to nursing or midwifery?

Include: hospital-based certificates and tertiary qualifications in nurse management or clinical practice

Exclude: in-service/continuing education sessions, refresher or re-entry courses or courses of less than 6 months' duration

- Yes  → Go to Q35B on the last page and complete Column 3
- No

There are no more questions. Thank you for your time

Please return this form to  
Nurses Board of SA,  
PO Box 7106, Hutt St, Adelaide, SA 5000

## Your nursing/midwifery job last week

20. Please continue but answer all further questions only in respect of your usual job(s) in a typical week prior to your current leave, rather than 'LAST WEEK'.

21. In your job last week, did you work

- Only in South Australia?
- Mainly in South Australia, but also in another state(s)?
- Mainly in another state(s)?
- Only in another state(s)?

22. Have you returned to work in the last 12 months, after a period of unpaid absence?

- Yes  (please specify length of absence)  
→ Years  & Months
- No

If you had more than 1 job last week in nursing/midwifery, please answer for both:

- your **main job** (in which you worked the most hours) and  
your **2<sup>nd</sup> job** (in which you worked the next most hours) where indicated in the following questions.

23. Select the category that best describes the principal place where you worked LAST WEEK

(For each job, please select only one box from those which apply in South Australia)

	Main job	2 <sup>nd</sup> job
Hospital ...	<input type="checkbox"/>	<input type="checkbox"/>
Psychiatric hospital/mental health facility ...	<input type="checkbox"/>	<input type="checkbox"/>
Outpatient clinic ...	<input type="checkbox"/>	<input type="checkbox"/>
Day procedure centre ...	<input type="checkbox"/>	<input type="checkbox"/>
Residential aged care centre ...	<input type="checkbox"/>	<input type="checkbox"/>
Hospice ...	<input type="checkbox"/>	<input type="checkbox"/>
Other residential care facility ...	<input type="checkbox"/>	<input type="checkbox"/>
Community health centre ...	<input type="checkbox"/>	<input type="checkbox"/>
Defence force facility ...	<input type="checkbox"/>	<input type="checkbox"/>
Government department ...	<input type="checkbox"/>	<input type="checkbox"/>
GP's practice ...	<input type="checkbox"/>	<input type="checkbox"/>
Specialist's rooms/practice ...	<input type="checkbox"/>	<input type="checkbox"/>
School ...	<input type="checkbox"/>	<input type="checkbox"/>
Commercial/industry/business ...	<input type="checkbox"/>	<input type="checkbox"/>
Tertiary institution ... (higher education/vocational education/training)	<input type="checkbox"/>	<input type="checkbox"/>
Other (Please specify) ...	<input type="checkbox"/>	<input type="checkbox"/>

*If you did not work in one principal place, mark the category that describes the 'home base' of your job.*

**Your nursing/midwifery job last week (cont.)**

<p>24. What was the postcode and location (suburb/town) of that place/home base of work?</p> <p style="text-align: center;"> <input type="checkbox"/> Main job      <input type="checkbox"/> 2<sup>nd</sup> job         </p> <p>Postcode <input type="text"/> <input type="text"/></p> <p>Main job location (suburb/town) <input type="text"/></p> <p>2nd job location (suburb/town) <input type="text"/></p> <p>25. In which sector was that place/home base of work?</p> <p style="text-align: center;"> <input type="checkbox"/> Main job      <input type="checkbox"/> 2<sup>nd</sup> job         </p> <p>Public ..... <input type="checkbox"/> <input type="checkbox"/></p> <p>Private ..... <input type="checkbox"/> <input type="checkbox"/></p>	<p>30. Approximately <u>how many hours</u> did you work in your job(s) LAST WEEK?</p> <p><i>NB: generally, a full-time position is around 35-40 hours per week depending on where you work</i></p> <p style="text-align: center;"> <input type="checkbox"/> Main job      <input type="checkbox"/> 2<sup>nd</sup> job         </p> <p>Please answer to the nearest hour.</p> <p>Regular hours worked at regular pay (incl. 'time off in lieu' of regular hours) <input type="text"/> <input type="text"/></p> <p>Hours worked above contract hours, but at regular hours pay <input type="text"/> <input type="text"/></p> <p>Hours of paid overtime worked (incl. 'time off in lieu' of overtime hours) <input type="text"/> <input type="text"/></p> <p>Unpaid hours worked (extra hours) <input type="text"/> <input type="text"/></p> <p>TOTAL number of HOURS <input type="text"/> <input type="text"/></p>
<p>26. Was your job</p> <p style="text-align: center;"> <input type="checkbox"/> Main job      <input type="checkbox"/> 2<sup>nd</sup> job         </p> <p>Permanent? .. <input type="checkbox"/> <input type="checkbox"/></p> <p>Casual? .. <input type="checkbox"/> <input type="checkbox"/></p> <p>Fixed term or temporary contract? .. <input type="checkbox"/> <input type="checkbox"/></p> <p>Own business or other? .. <input type="checkbox"/> <input type="checkbox"/></p>	<p>31. Approximately <u>how many hours</u> did you spend LAST WEEK performing the following core roles?</p> <p><i>Include: paid and unpaid overtime</i></p> <p style="text-align: center;"> <input type="checkbox"/> Main job      <input type="checkbox"/> 2<sup>nd</sup> job         </p> <p>Clinical nursing (direct patient care) <input type="text"/> <input type="text"/></p> <p>Clinical management and or nurse/midwifery administration /management (incl. meetings) <input type="text"/> <input type="text"/></p> <p>Lecturing, nurse/midwifery education, clinical education and/or supervising/supporting students/new nurses/midwives <input type="text"/> <input type="text"/></p> <p>Research <input type="text"/> <input type="text"/></p> <p>Other nursing/midwifery related activity <input type="text"/> <input type="text"/></p> <p>TOTAL HOURS (should equal total hours in Q30 above) <input type="text"/> <input type="text"/></p>
<p>27. Were you employed through or paid by an employment agency for your nursing/midwifery job LAST WEEK?</p> <p style="text-align: center;"> <input type="checkbox"/> Main job      <input type="checkbox"/> 2<sup>nd</sup> job         </p> <p>Yes <input type="checkbox"/> <input type="checkbox"/></p> <p>No <input type="checkbox"/> <input type="checkbox"/></p>	
<p>28. Which of the following best describes the type of care delivery in your job(s)?</p> <p style="text-align: center;"> <input type="checkbox"/> Main job      <input type="checkbox"/> 2<sup>nd</sup> job         </p> <p>In-patient .. <input type="checkbox"/> <input type="checkbox"/></p> <p>Outpatient .. <input type="checkbox"/> <input type="checkbox"/></p> <p>Both in-patient &amp; outpatient .. <input type="checkbox"/> <input type="checkbox"/></p> <p>Residential... <input type="checkbox"/> <input type="checkbox"/></p> <p>Community based... <input type="checkbox"/> <input type="checkbox"/></p> <p>Developmental disability service .. <input type="checkbox"/> <input type="checkbox"/></p> <p>Aboriginal health service .. <input type="checkbox"/> <input type="checkbox"/></p> <p>Other clinical... <input type="checkbox"/> <input type="checkbox"/></p> <p>Non-clinical nursing .. <input type="checkbox"/> <input type="checkbox"/></p>	
<p>29. Select the category that best describes the classification or level of your job LAST WEEK</p> <p><i>(Please tick only one box for each job)</i></p> <p style="text-align: center;"> <input type="checkbox"/> Main job      <input type="checkbox"/> 2<sup>nd</sup> job         </p> <p>Enrolled Nurse... <input type="checkbox"/> <input type="checkbox"/></p> <p>Level 1 Registered Nurse or Midwife .. <input type="checkbox"/> <input type="checkbox"/></p> <p>Level 1 Nurse or Midwife Specialist .. <input type="checkbox"/> <input type="checkbox"/></p> <p>Level 2 Clinical Nurse or Midwife .. <input type="checkbox"/> <input type="checkbox"/></p> <p>Level 3 Nurse Practitioner .. <input type="checkbox"/> <input type="checkbox"/></p> <p>Level 3 Clinical Nurse or Midwife Consultant .. <input type="checkbox"/> <input type="checkbox"/></p> <p>Level 3 Nurse/Midwife Manager .. <input type="checkbox"/> <input type="checkbox"/></p> <p>Level 3 Staff Development/Education .. <input type="checkbox"/> <input type="checkbox"/></p> <p>Level 4 Clinical... <input type="checkbox"/> <input type="checkbox"/></p> <p>Level 4 Management... <input type="checkbox"/> <input type="checkbox"/></p> <p>Level 4 Staff Development/Education .. <input type="checkbox"/> <input type="checkbox"/></p> <p>Level 5 Director of Nursing and/or Midwifery .. <input type="checkbox"/> <input type="checkbox"/></p> <p>Higher Education or TAFE Lecturer... <input type="checkbox"/> <input type="checkbox"/></p> <p>Professor/Academic .. <input type="checkbox"/> <input type="checkbox"/></p> <p>Non-nursing Award .. <input type="checkbox"/> <input type="checkbox"/></p> <p>Other (Please specify)..... <input type="text"/></p> <p><input type="text"/></p>	<p><b>Post registration study</b></p> <p>32. Are you <u>currently undertaking</u> any post-registration or post-enrolment courses of study <u>related to nursing or midwifery</u>?</p> <p><i>Include: hospital-based certificates and tertiary qualifications in nurse management or clinical practice</i></p> <p><i>Exclude: in-service/continuing education sessions, refresher and re-entry courses or courses of less than 6 months' duration</i></p> <p>Yes <input type="checkbox"/> → Go to Q33</p> <p>No <input type="checkbox"/> → Go to Q34</p>
	<p>33. In the space(s) below, please write the main <u>field or subject</u> of your current study (not the name of the course)</p> <p><i>(a maximum of 2 courses, please.)</i></p> <p>Main field/subject of course 1 currently being undertaken</p> <p><input type="text"/></p> <p>Main field/subject of course 2 currently being undertaken</p> <p><input type="text"/></p>
	<p>34. Have you <u>completed</u> any post-registration/enrolment courses of study <u>relating to nursing or midwifery</u>?</p> <p><i>Include: hospital-based certificates and tertiary qualifications in nurse management or clinical practice</i></p> <p><i>Exclude: in-service/continuing education sessions, refresher or re-entry courses or courses of less than 6 months' duration</i></p> <p>Yes <input type="checkbox"/> please go to Q35A and Q35B on the next page for directions to record your 'area of practice' (columns 1 &amp; 2) &amp; your 'study field(s)' (column 3) → Go to Q35A &amp; 35B</p> <p>No <input type="checkbox"/> please go to Q35A on the next page for directions to record your 'area of practice' in your job(s) (columns 1 &amp; 2). Ignore column 3 → Go to Q35A</p>

## Your area of practice & your post-registration/enrolment study

**35A.** For the area of practice in your job(s), mark one principal area & one specialty area for each job. For 'Main job' mark column 1 next to the categories best describing your activity and, if applicable, mark column 2 for your '2<sup>nd</sup> job'.

**35B.** For study courses, mark all subjects/fields studied (not the course name) in column 3 next to the categories best describing the principal & specialty study areas.

	Column 1 Main job	Column 2 2 <sup>nd</sup> job	Column 3 Study field		Column 1 Main job	Column 2 2 <sup>nd</sup> job	Column 3 Study field
<b>Critical care/emergency</b> →	Principal area <input type="checkbox"/>	Specialty area <input type="checkbox"/>	Principal field <input type="checkbox"/>	<b>Aged care</b> →	Principal area <input type="checkbox"/>	Specialty area <input type="checkbox"/>	Principal field <input type="checkbox"/>
Cardiac/Coronary care	<input type="checkbox"/>	<input type="checkbox"/>	<input type="checkbox"/>	Continence	<input type="checkbox"/>	<input type="checkbox"/>	<input type="checkbox"/>
Emergency/trauma	<input type="checkbox"/>	<input type="checkbox"/>	<input type="checkbox"/>	Gerontology	<input type="checkbox"/>	<input type="checkbox"/>	<input type="checkbox"/>
High dependency	<input type="checkbox"/>	<input type="checkbox"/>	<input type="checkbox"/>	Other/across more than one area	<input type="checkbox"/>	<input type="checkbox"/>	<input type="checkbox"/>
Intensive care	<input type="checkbox"/>	<input type="checkbox"/>	<input type="checkbox"/>	<b>Rehabilitation-disability</b> →	Principal area <input type="checkbox"/>	Specialty area <input type="checkbox"/>	Principal field <input type="checkbox"/>
Neonatal intensive care	<input type="checkbox"/>	<input type="checkbox"/>	<input type="checkbox"/>	Disability	<input type="checkbox"/>	<input type="checkbox"/>	<input type="checkbox"/>
Paediatric critical care	<input type="checkbox"/>	<input type="checkbox"/>	<input type="checkbox"/>	Rehabilitation	<input type="checkbox"/>	<input type="checkbox"/>	<input type="checkbox"/>
Retrieval	<input type="checkbox"/>	<input type="checkbox"/>	<input type="checkbox"/>	Developmental disability	<input type="checkbox"/>	<input type="checkbox"/>	<input type="checkbox"/>
Other/across more than one area	<input type="checkbox"/>	<input type="checkbox"/>	<input type="checkbox"/>	Other/across more than one area	<input type="checkbox"/>	<input type="checkbox"/>	<input type="checkbox"/>
<b>Mixed medical/surgical</b> →	Principal area <input type="checkbox"/>	Specialty area <input type="checkbox"/>	Principal field <input type="checkbox"/>	<b>Mental Health</b> →	Principal area <input type="checkbox"/>	Specialty area <input type="checkbox"/>	Principal field <input type="checkbox"/>
Paediatrics	<input type="checkbox"/>	<input type="checkbox"/>	<input type="checkbox"/>	Adult mental health	<input type="checkbox"/>	<input type="checkbox"/>	<input type="checkbox"/>
Other/across more than one area	<input type="checkbox"/>	<input type="checkbox"/>	<input type="checkbox"/>	Child & adolescent mental health	<input type="checkbox"/>	<input type="checkbox"/>	<input type="checkbox"/>
<b>Medical nursing</b> →	Principal area <input type="checkbox"/>	Specialty area <input type="checkbox"/>	Principal field <input type="checkbox"/>	Forensic	<input type="checkbox"/>	<input type="checkbox"/>	<input type="checkbox"/>
Cardiology	<input type="checkbox"/>	<input type="checkbox"/>	<input type="checkbox"/>	Psycho-geriatric	<input type="checkbox"/>	<input type="checkbox"/>	<input type="checkbox"/>
Endocrinology	<input type="checkbox"/>	<input type="checkbox"/>	<input type="checkbox"/>	Rural and remote mental health	<input type="checkbox"/>	<input type="checkbox"/>	<input type="checkbox"/>
Gastroenterology	<input type="checkbox"/>	<input type="checkbox"/>	<input type="checkbox"/>	Other/across more than one area	<input type="checkbox"/>	<input type="checkbox"/>	<input type="checkbox"/>
Neurology	<input type="checkbox"/>	<input type="checkbox"/>	<input type="checkbox"/>	<b>Family &amp; child health</b> →	Principal area <input type="checkbox"/>	Specialty area <input type="checkbox"/>	Principal field <input type="checkbox"/>
Infection control	<input type="checkbox"/>	<input type="checkbox"/>	<input type="checkbox"/>	Family planning	<input type="checkbox"/>	<input type="checkbox"/>	<input type="checkbox"/>
Oncology/haematology	<input type="checkbox"/>	<input type="checkbox"/>	<input type="checkbox"/>	Family, youth & child health	<input type="checkbox"/>	<input type="checkbox"/>	<input type="checkbox"/>
Palliative care	<input type="checkbox"/>	<input type="checkbox"/>	<input type="checkbox"/>	Infertility & assisted reproduction	<input type="checkbox"/>	<input type="checkbox"/>	<input type="checkbox"/>
Renal medicine/nephrology	<input type="checkbox"/>	<input type="checkbox"/>	<input type="checkbox"/>	Lactation and infant feeding	<input type="checkbox"/>	<input type="checkbox"/>	<input type="checkbox"/>
Respiratory	<input type="checkbox"/>	<input type="checkbox"/>	<input type="checkbox"/>	Men's health	<input type="checkbox"/>	<input type="checkbox"/>	<input type="checkbox"/>
General Medical nursing	<input type="checkbox"/>	<input type="checkbox"/>	<input type="checkbox"/>	Paediatric & child health	<input type="checkbox"/>	<input type="checkbox"/>	<input type="checkbox"/>
Other/across more than one area	<input type="checkbox"/>	<input type="checkbox"/>	<input type="checkbox"/>	School health	<input type="checkbox"/>	<input type="checkbox"/>	<input type="checkbox"/>
<b>Surgical nursing</b> →	Principal area <input type="checkbox"/>	Specialty area <input type="checkbox"/>	Principal field <input type="checkbox"/>	Sexual health	<input type="checkbox"/>	<input type="checkbox"/>	<input type="checkbox"/>
Burns & plastics	<input type="checkbox"/>	<input type="checkbox"/>	<input type="checkbox"/>	Women's health	<input type="checkbox"/>	<input type="checkbox"/>	<input type="checkbox"/>
Cardiothoracic	<input type="checkbox"/>	<input type="checkbox"/>	<input type="checkbox"/>	Other/across more than one area	<input type="checkbox"/>	<input type="checkbox"/>	<input type="checkbox"/>
Ear, nose & throat	<input type="checkbox"/>	<input type="checkbox"/>	<input type="checkbox"/>	<b>Community health</b> →	Principal area <input type="checkbox"/>	Specialty area <input type="checkbox"/>	Principal field <input type="checkbox"/>
Gastro-intestinal	<input type="checkbox"/>	<input type="checkbox"/>	<input type="checkbox"/>	Asthma education & management	<input type="checkbox"/>	<input type="checkbox"/>	<input type="checkbox"/>
Neurosurgical	<input type="checkbox"/>	<input type="checkbox"/>	<input type="checkbox"/>	Alcohol & substance abuse	<input type="checkbox"/>	<input type="checkbox"/>	<input type="checkbox"/>
Ophthalmology	<input type="checkbox"/>	<input type="checkbox"/>	<input type="checkbox"/>	Correctional facility nursing	<input type="checkbox"/>	<input type="checkbox"/>	<input type="checkbox"/>
Orthopaedic	<input type="checkbox"/>	<input type="checkbox"/>	<input type="checkbox"/>	Diabetes education & management	<input type="checkbox"/>	<input type="checkbox"/>	<input type="checkbox"/>
Gynaecology	<input type="checkbox"/>	<input type="checkbox"/>	<input type="checkbox"/>	Health education/disease managem't	<input type="checkbox"/>	<input type="checkbox"/>	<input type="checkbox"/>
Urology	<input type="checkbox"/>	<input type="checkbox"/>	<input type="checkbox"/>	Health promotion	<input type="checkbox"/>	<input type="checkbox"/>	<input type="checkbox"/>
Vascular	<input type="checkbox"/>	<input type="checkbox"/>	<input type="checkbox"/>	Indigenous health	<input type="checkbox"/>	<input type="checkbox"/>	<input type="checkbox"/>
Wound management	<input type="checkbox"/>	<input type="checkbox"/>	<input type="checkbox"/>	Medical practice nurse	<input type="checkbox"/>	<input type="checkbox"/>	<input type="checkbox"/>
General surgical nursing	<input type="checkbox"/>	<input type="checkbox"/>	<input type="checkbox"/>	Public health	<input type="checkbox"/>	<input type="checkbox"/>	<input type="checkbox"/>
Other/across more than one area	<input type="checkbox"/>	<input type="checkbox"/>	<input type="checkbox"/>	Rural & remote health	<input type="checkbox"/>	<input type="checkbox"/>	<input type="checkbox"/>
<b>Perioperative</b> →	Principal area <input type="checkbox"/>	Specialty area <input type="checkbox"/>	Principal field <input type="checkbox"/>	Transcultural nursing	<input type="checkbox"/>	<input type="checkbox"/>	<input type="checkbox"/>
Anaesthetic	<input type="checkbox"/>	<input type="checkbox"/>	<input type="checkbox"/>	Other/across more than one area	<input type="checkbox"/>	<input type="checkbox"/>	<input type="checkbox"/>
Perioperative	<input type="checkbox"/>	<input type="checkbox"/>	<input type="checkbox"/>	<b>Other</b> →	Principal area <input type="checkbox"/>	Specialty area <input type="checkbox"/>	Principal field <input type="checkbox"/>
Recovery	<input type="checkbox"/>	<input type="checkbox"/>	<input type="checkbox"/>	Nurse education (incl. clinical)	<input type="checkbox"/>	<input type="checkbox"/>	<input type="checkbox"/>
Other/across more than one area	<input type="checkbox"/>	<input type="checkbox"/>	<input type="checkbox"/>	Pathology/laboratory	<input type="checkbox"/>	<input type="checkbox"/>	<input type="checkbox"/>
<b>Midwifery</b> →	Principal area <input type="checkbox"/>	Specialty area <input type="checkbox"/>	Principal field <input type="checkbox"/>	Policy	<input type="checkbox"/>	<input type="checkbox"/>	<input type="checkbox"/>
Antenatal	<input type="checkbox"/>	<input type="checkbox"/>	<input type="checkbox"/>	Research	<input type="checkbox"/>	<input type="checkbox"/>	<input type="checkbox"/>
Labour	<input type="checkbox"/>	<input type="checkbox"/>	<input type="checkbox"/>	No one area of practice	<input type="checkbox"/>	<input type="checkbox"/>	<input type="checkbox"/>
Maternal & child health	<input type="checkbox"/>	<input type="checkbox"/>	<input type="checkbox"/>	Other (Please specify)	<input type="checkbox"/>	<input type="checkbox"/>	<input type="checkbox"/>
Neonatology/neonatal nursery	<input type="checkbox"/>	<input type="checkbox"/>	<input type="checkbox"/>				
Postnatal	<input type="checkbox"/>	<input type="checkbox"/>	<input type="checkbox"/>				
Other/across more than one area	<input type="checkbox"/>	<input type="checkbox"/>	<input type="checkbox"/>				

Thank you very much for your time. Please return this form to the Nurses Board of SA, PO Box 7106, Hutt St, Adelaide, SA 5000

## **APPENDIX B: DATA COUNTING RULES**

“All Nurses” includes the response of all who responded to the census.

“Registered Nurse” includes all who responded yes to question 2a.

“Enrolled Nurse” includes all who responded yes to question 2b.

“Midwife” includes all who responded yes question 2a or 2d and yes to 3a.

“Mental Health Nurse” includes all who responded yes to question 2a and yes to 3b.

A respondent is defined to be of Aboriginal / Torres Strait Islander origin if they responded to question 9, as either or both, yes, Aboriginal or yes, Torres Strait Islander.

### **THE PREVIOUS RULES ALSO APPLY TO THE FOLLOWING QUESTIONS WHEN SEPARATED INTO REGISTERED, ENROLLED, MIDWIFE, MENTAL HEALTH AND ABORIGINAL / TORRES STRAIT ISLANDER ORIGIN.**

Place of receiving qualification was broken down and grouped into states and country regions from “all nurses” who responded to question 4.

Years worked is based on “all nurses” who responded to question 6.

Average age is based on year of birth of “all nurses” and separate categories of nurses who responded to the census.

Australian citizenship is based on “all nurses” who responded yes to question 10.

Postcode numbers are based on “all nurses” who responded to question 11 for residence and question 24 for main job.

Courses completed on “all nurses” who responded yes to question 32 and also completed the completed courses and currently studying codes in fields in question 35b.

Employment status is based on “all nurses” who responded to question 13, 20, 21 & 22.

Public and Private sectors are based on “all nurses” response to question 25.

Job status was based on “all nurses” response rate to question 26.

A nurse paid by agency is based on “all nurses” response rate to question 27.

Average hours worked per week is based on “all nurses” response to question 30.

Average hours worked per week in core roles is based on “all nurses” who responded to question 31.

Classification or level of job is based on “all nurses” who responded to question 29.

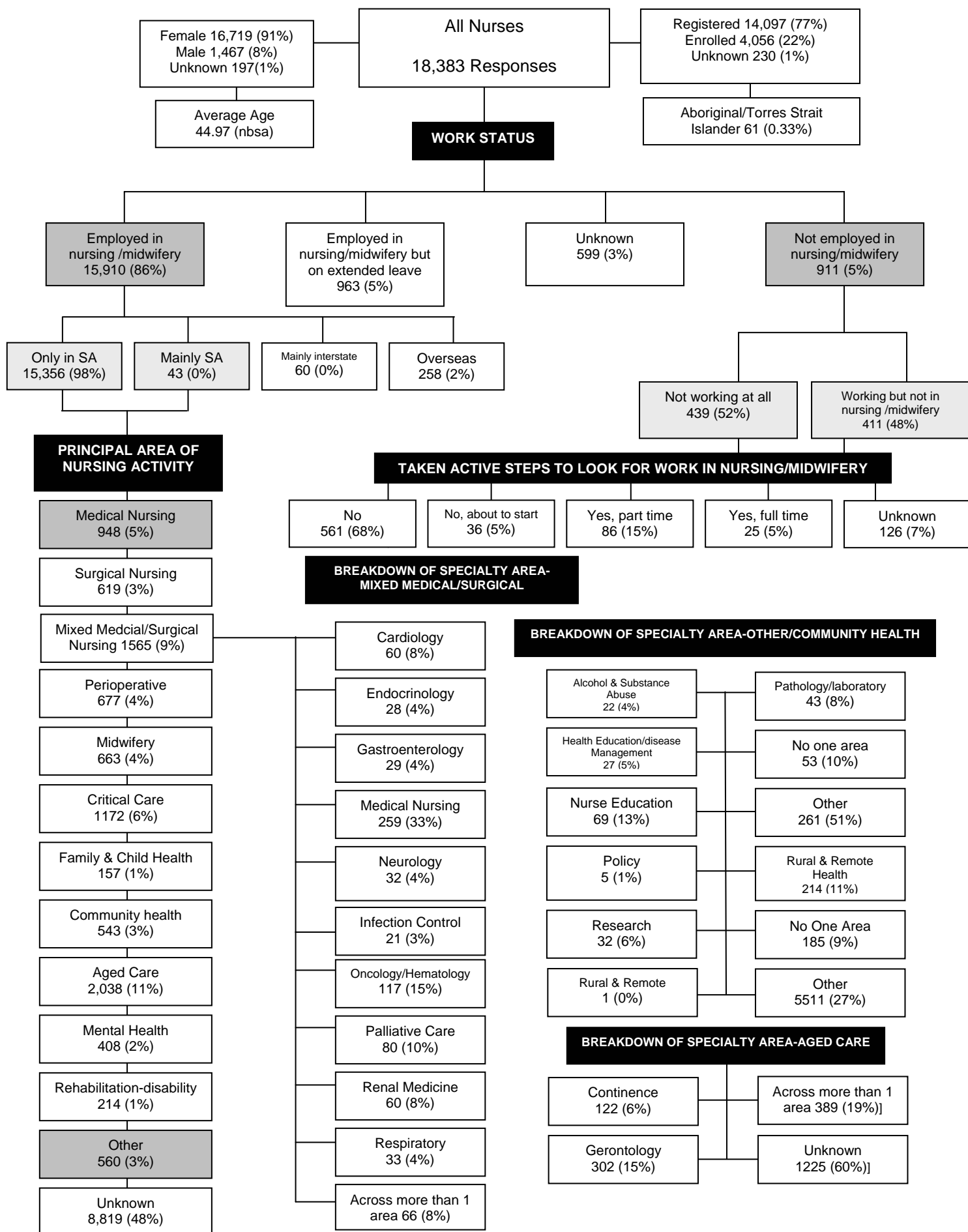
Principle area of practice is based on “all nurses” who responded to question 35a part 1.

Specialty area of practice is based on “all nurses” who responded to question 35a part 2.

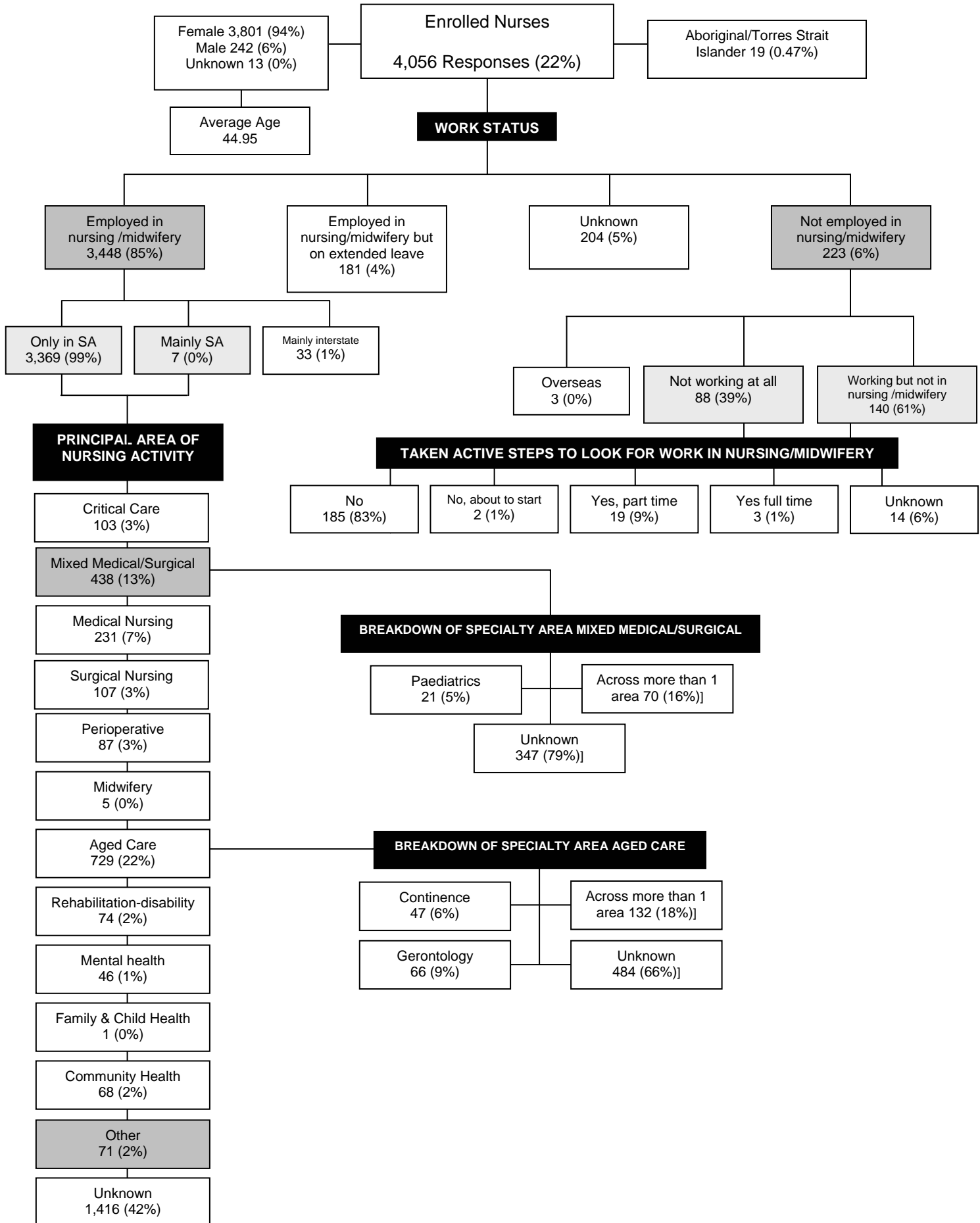
## **APPENDIX C: NURSING AND MIDWIFERY LABOUR FORCE SUMMARY PROFILES**

- Registered and Enrolled Nurses
- Enrolled Nurses
- Registered Nurses
- Midwives
- Mental Health Nurses
- Registered and Enrolled Nurses 2003 - 2006

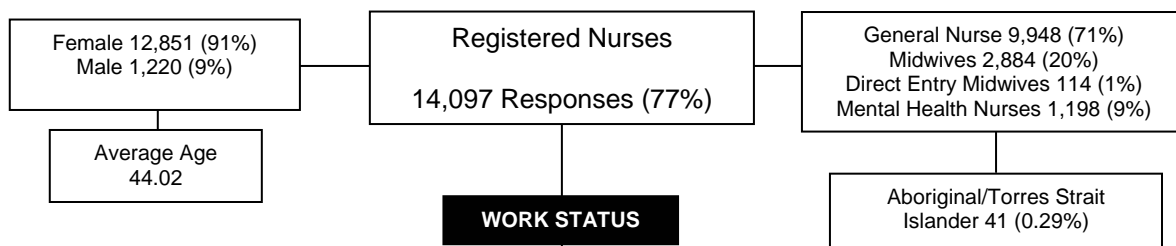
# PROFILE 1 - TOTAL REGISTERED AND ENROLLED NURSES, SA 2006



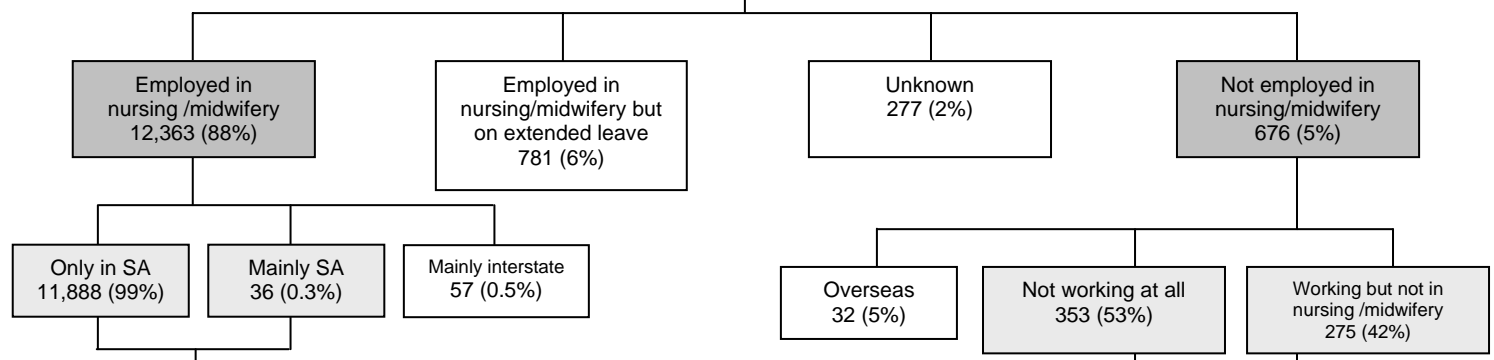
## PROFILE 2 - TOTAL ENROLLED NURSES SA 2006



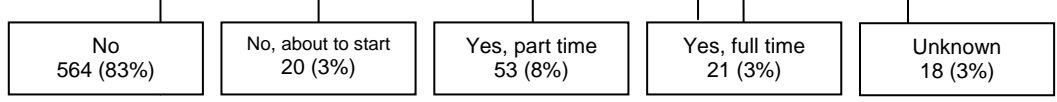
## PROFILE 3 - TOTAL REGISTERED NURSES SA 2006



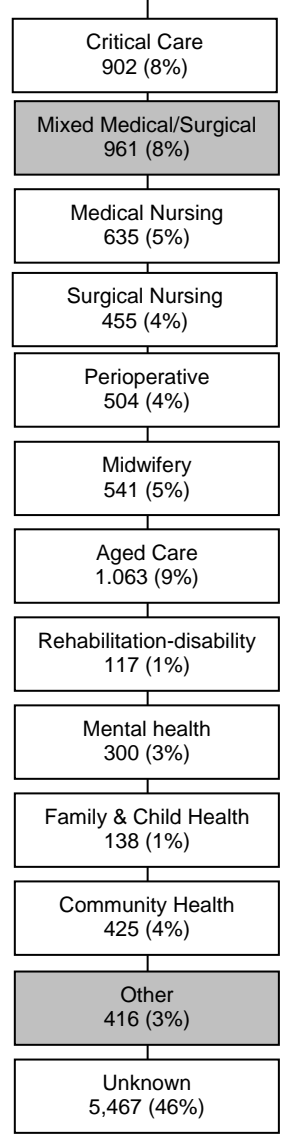
### WORK STATUS



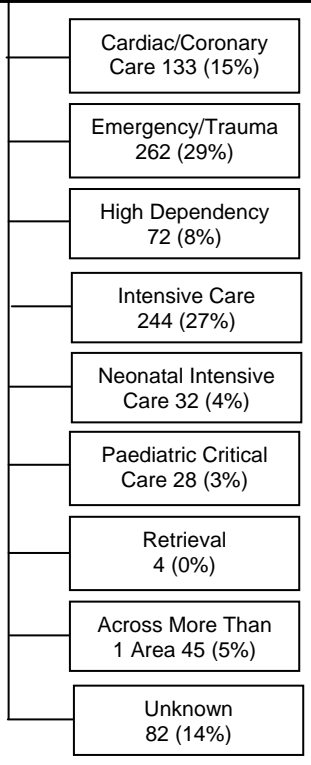
### TAKEN ACTIVE STEPS TO LOOK FOR WORK IN NURSING/MIDWIFERY



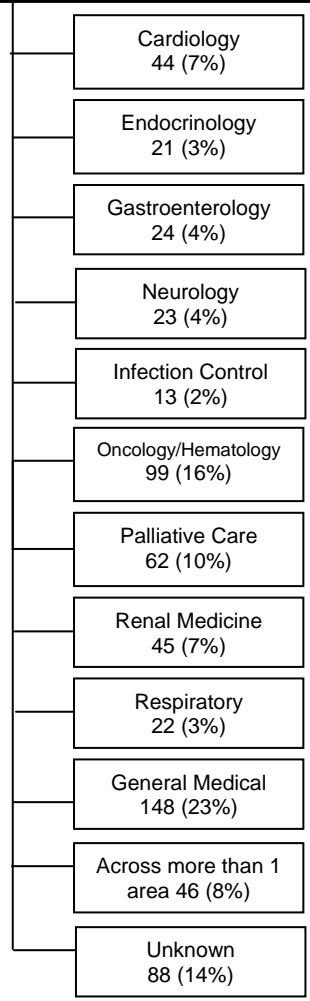
### PRINCIPAL AREA OF NURSING ACTIVITY



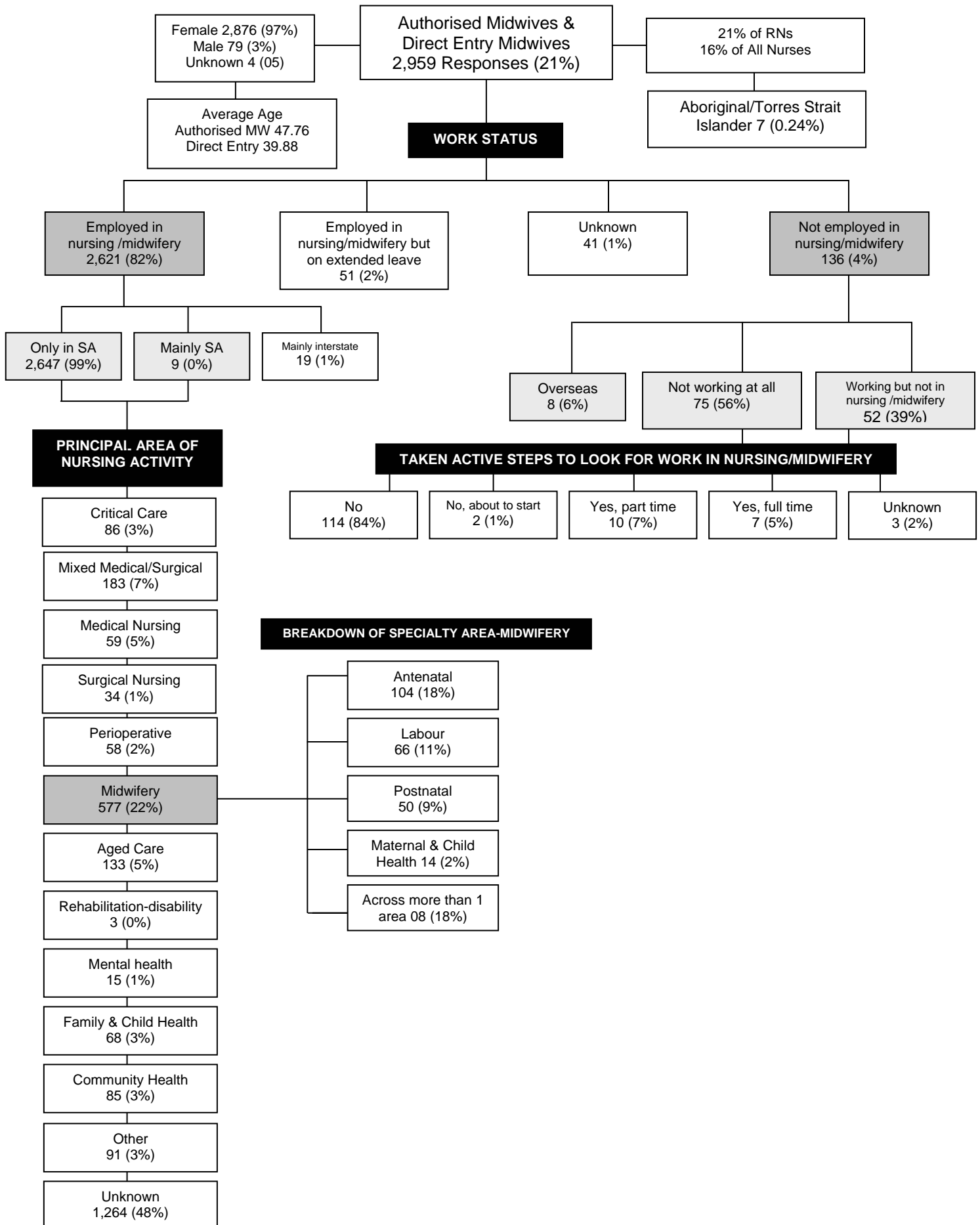
### BREAKDOWN OF SPECIALTY- CRITICAL CARE



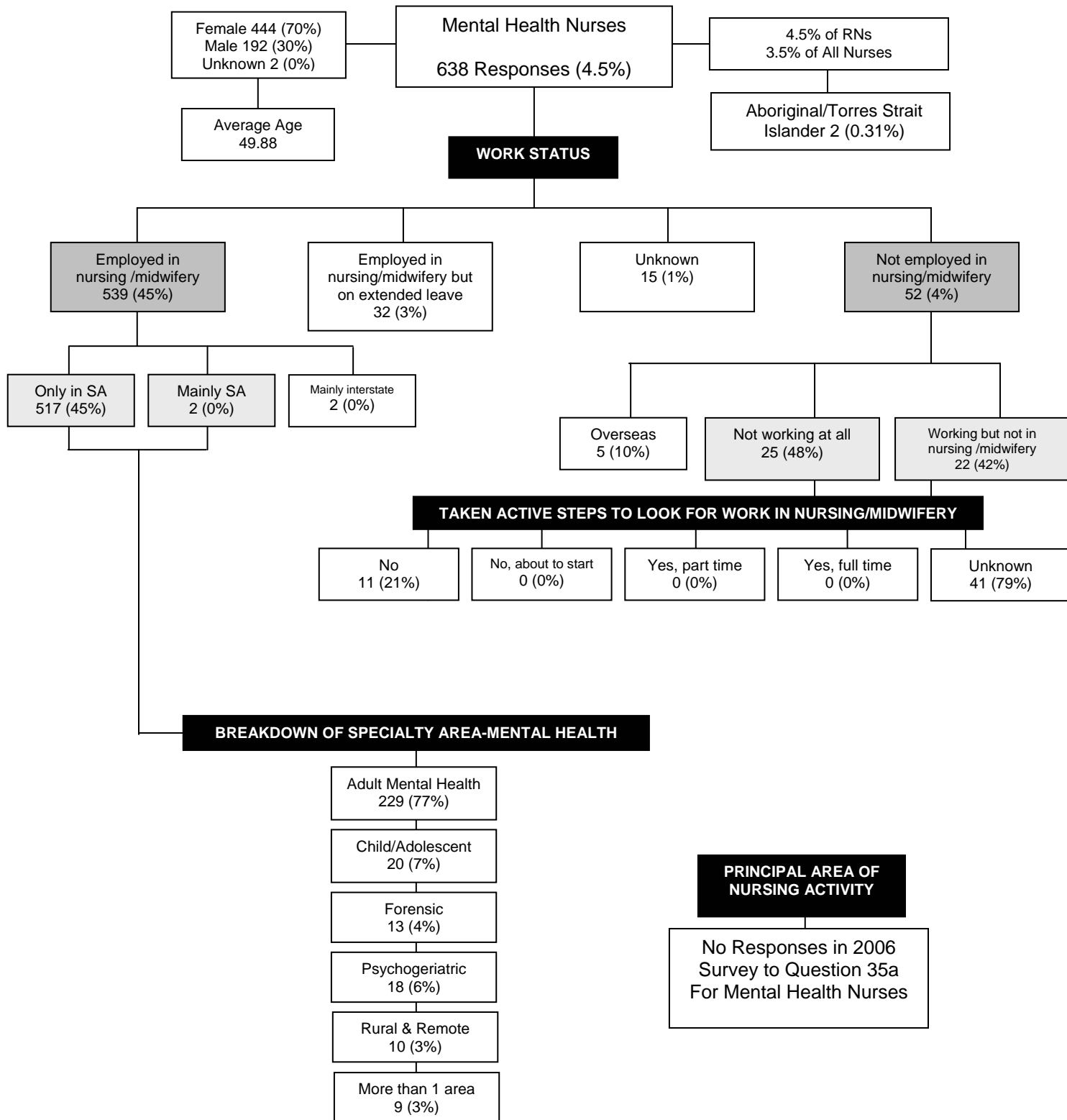
### BREAKDOWN OF SPECIALTY-MEDICAL NURSING



## PROFILE 4 - TOTAL AUTHORISED MIDWIVES, SA 2006



## PROFILE 5 - TOTAL AUTHORISED PSYCHIATRIC / MENTAL HEALTH NURSES SA 2006



## PROFILE 6 – TOTAL REGISTERED AND ENROLLED NURSES, SA 2003 - 2006

Category	2003 RR 75%		2004 RR 74%		2005 RR 72%		2006 RR 69%	
	No.	%	No.	%	No.	%	No.	%
Female	16714	92	16938	91	17130	93	16719	91
Male	1396	8	1437	8	1344	7	1467	8
Unknown	134	1	170	1	0	0	197	1
<b>Total</b>	<b>18244</b>	<b>100</b>	<b>18545</b>	<b>100</b>	<b>18474</b>	<b>100</b>	<b>18383</b>	<b>100</b>

<b>Avg Age</b>	<b>43.77</b>		<b>44.03</b>		<b>44.65</b>		<b>44.97</b>	
----------------	--------------	--	--------------	--	--------------	--	--------------	--

<b>ATSI</b>	<b>43</b>	<b>0.24</b>	<b>51</b>	<b>0.28</b>	<b>50</b>	<b>0.27</b>	<b>61</b>	<b>0.33</b>
-------------	-----------	-------------	-----------	-------------	-----------	-------------	-----------	-------------

Work Status								
Employed	15755	85	16278	88	16183	88	15910	86
On leave	391	2	323	2	277	1	963	5
Unknown	969	5	1046	6	1180	6	599	3
Not employed	1129	6	898	5	834	5	911	5
<b>Total</b>	<b>18244</b>	<b>99</b>	<b>18545</b>	<b>100</b>	<b>18474</b>	<b>100</b>	<b>18383</b>	<b>100</b>
Only SA	15271	97	15197	93	15574	96	15356	98
Mainly SA	108	1	732	4	221	1	43	0
Mainly interstate	259	2	226	1	254	2	60	0
Overseas	117	1	123	1	134	1	258	2
<b>Total</b>	<b>15755</b>	<b>100</b>	<b>16278</b>	<b>100</b>	<b>16183</b>	<b>100</b>	<b>15717</b>	<b>100</b>
Not working	542	48	436	49	423	51	439	52
Not working in nursing	587	52	462	51	411	49	411	48
<b>Total</b>	<b>1129</b>	<b>100</b>	<b>898</b>	<b>100</b>	<b>834</b>	<b>100</b>	<b>850</b>	<b>100</b>

Active Steps Taken to Look for Work in Nursing/Midwifery								
No	710	63	612	68	561	67	761	84
About to start	41	4	44	5	36	4	22	2
Part-time	164	15	137	15	86	10	72	8
Full-time	19	2	41	5	25	3	25	3
Unknown	195	17	64	7	126	15	31	3
<b>Total</b>	<b>1129</b>	<b>100</b>	<b>898</b>	<b>100</b>	<b>834</b>	<b>100</b>	<b>911</b>	<b>100</b>

Principle Area of Practice								
Medical	2429	16	2530	16	2442	15	948	5
Surgical	1601	10	1535	10	1562	10	619	3
Mixed Medical/Surgical	n.a		n.a		n.a		1565	9
Perioperative	1063	7	1096	7	1061	7	677	4
Midwifery	957	6	920	6	928	6	663	4
Critical Care	1344	9	1404	9	1435	9	1172	6
Family & Child Health	410	3	437	3	432	3	157	1
Community Health	913	6	952	6	949	6	543	3
Aged Care	2331	15	2404	15	2338	15	2038	11
Mental Health	778	5	756	5	745	5	408	2
Rehab/Disability	414	3	429	3	413	3	214	1
Other	2403	16	2243	14	2038	13	560	3
Unknown	736	5	1223	8	1452	9	8819	48
<b>Total</b>	<b>15379</b>	<b>100</b>	<b>15929</b>	<b>100</b>	<b>15795</b>	<b>100</b>	<b>18383</b>	<b>100</b>

RR = CENSUS RESPONSE RATE

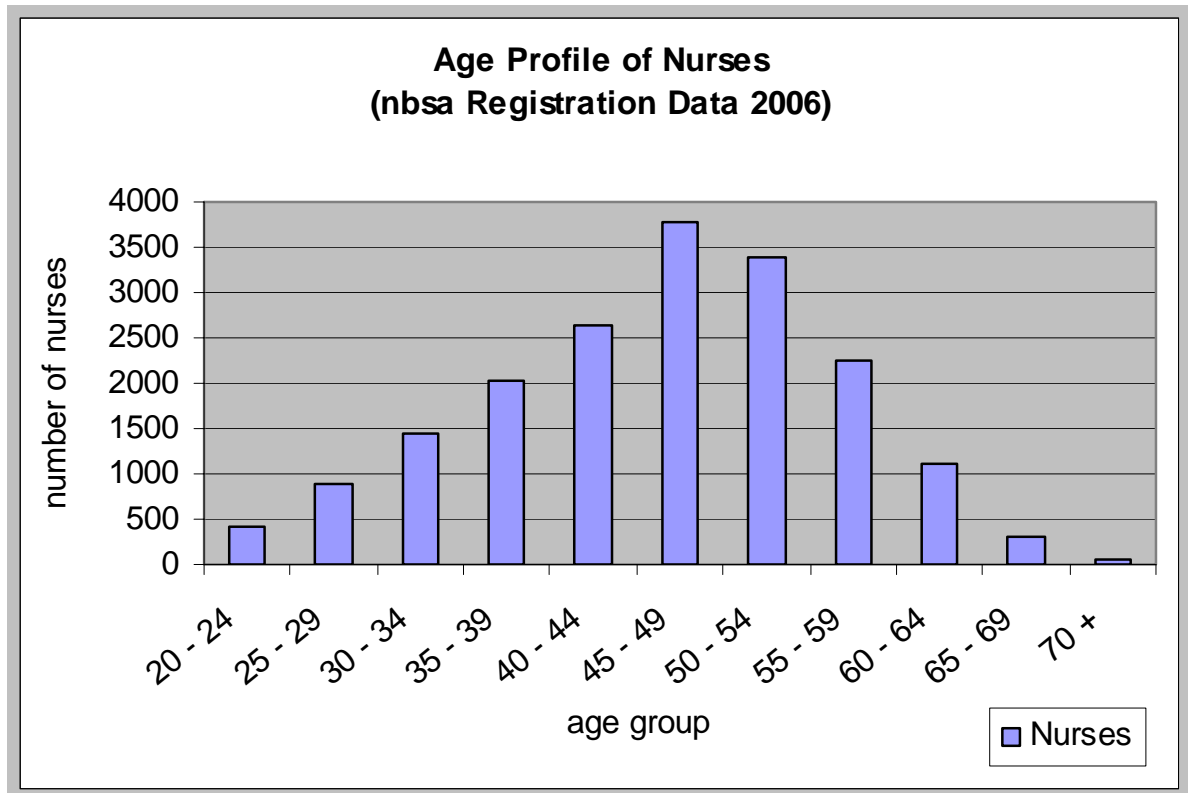
Category	2003 RR 75%		2004 RR 74%		2005 RR 72%		2006 RR 69%	
	No.	%	No.	%	No.	%	No.	%
<b>Breakdown of Medical Nursing into Specialty Area</b>								
Cardiology	202	8	252	10	232	10	60	8
Endocrinology	17	1	24	1	18	1	28	4
Gastroenterology	78	3	83	3	90	4	29	4
Medical	924	38	927	37	830	34	259	33
Neurology	38	2	58	2	68	3	32	4
Infection Control	n.a.		n.a.		n.a.		21	3
Oncology/Haematology	239	10	247	10	255	10	117	15
Palliative Care	174	7	156	6	164	7	80	10
Renal	151	6	151	6	165	7	60	8
Respiratory	80	3	102	4	84	3	33	4
Across more than 1 area	526	22	530	21	536	22	66	8
<b>Total</b>	<b>2429</b>	<b>100</b>	<b>2530</b>	<b>100</b>	<b>2442</b>	<b>100</b>	<b>785</b>	<b>100</b>

<b>Breakdown of Other into Specialty Area</b>								
<i>(includes some from categories from Community Health in 2006 due to new format form)</i>								
Alcohol & Sub abuse	64	3	58	3	44	2	22	4
Health Ed & Disease								
Mngmt	65	3	56	2	72	4	27	5
Infection Control	35	1	27	1	39	2	n.a.	
Informatics	24	1	24	1	32	2	n.a.	
Management	438	18	444	20	447	22	n.a.	
Nurse Ed	176	7	185	8	197	10	69	13
OH&S	83	3	81	4	80	4	n.a.	
Policy	8	0	11	0	14	1	5	1
Quality Management	38	2	38	2	50	2	n.a.	
Research	119	5	129	6	113	6	32	6
Rural & Remote	184	8	227	10	214	11	1	0
Pathology/laboratory	n.a.		n.a.		n.a.		43	8
No one area	200	8	183	8	185	9	53	10
Other	969	40	780	35	551	27	261	51
<b>Total</b>	<b>2403</b>	<b>100</b>	<b>2243</b>	<b>100</b>	<b>2038</b>	<b>100</b>	<b>513</b>	<b>100</b>

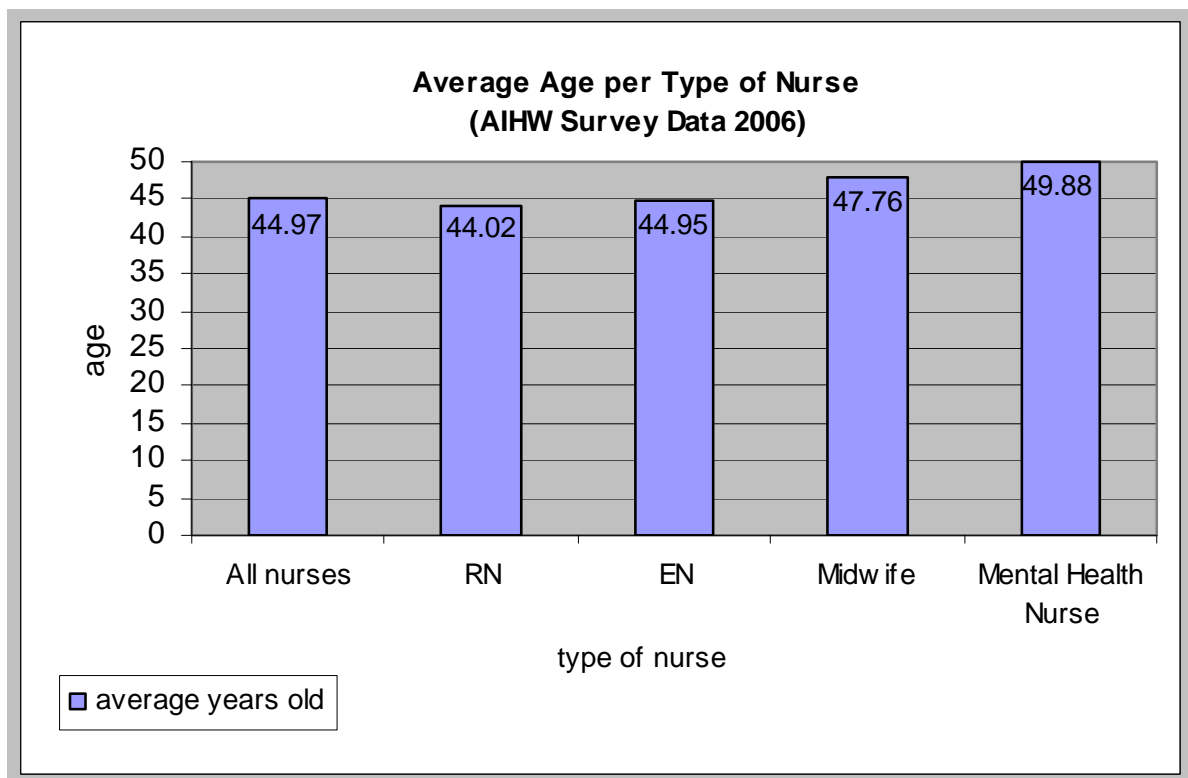
RR = census response rate

## APPENDIX D: DEMOGRAPHICS

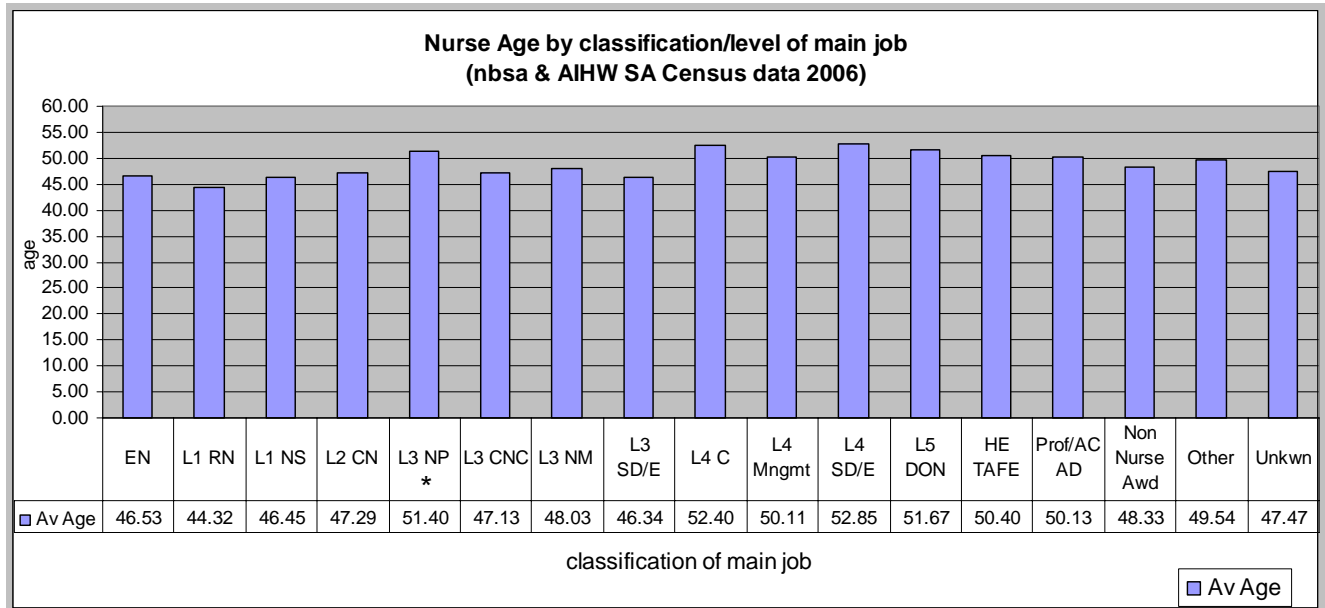
### Graph 1 – Age Profile of Nurses



### Graph 2 - Average Age per Type of Nurse



**Graph 3 - Nurse Average Age by Classification of Main Job**

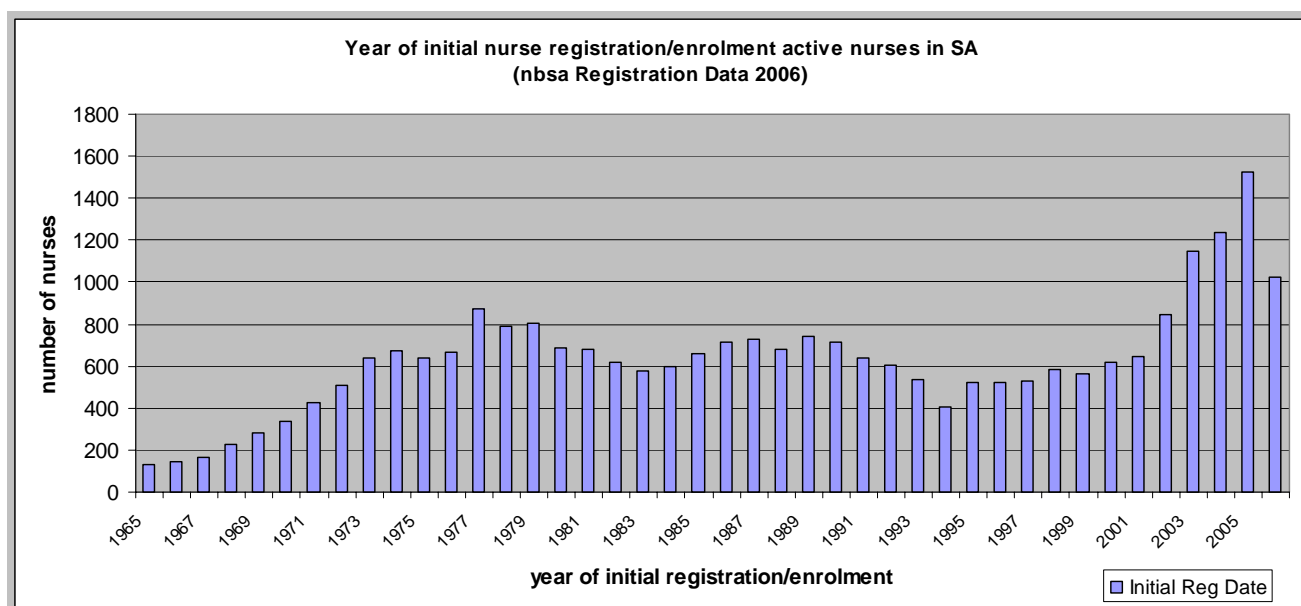


\*nbsa 2006 Registration data shows 18 Nurse Practitioners with an average age of 45.33

**Graph 4 - Average years worked since 1st registered/enrolled as a nurse in Australia**



**Graph 5 - Year of initial nurse registration/enrolment in SA**



Note: 2006 intake data incomplete

**Table 4: nbsa SA Educated Nurses & Midwives Registered or Enrolled**

	EN	RN	Midwife	Mental Health	Total
2001-02	237	428	58	25	748
2002-03	445	550	50	17	1,062
2003-04	539	556	36	33	1,164
2004-05	454	591	67	42	1,154
2005-06	428	667	70	24	1,189

Data source: nbsa Annual Report 2005-2006

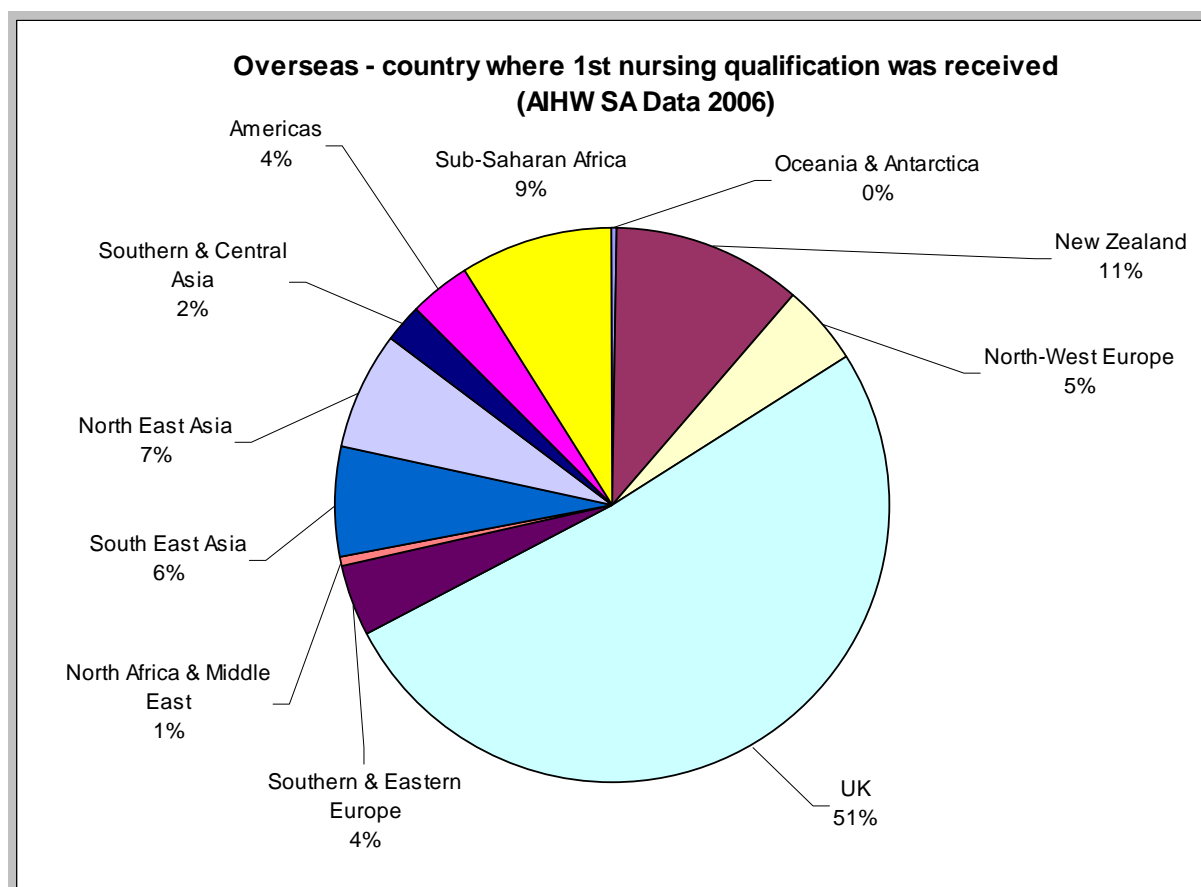
In 2005-2006, 428 enrolled nurses, 667 registered general nurses, 70 registered midwives and 24 registered mental health nurses received initial registration or enrolment, totalling 1, 189.

**Table 5: Postcode of usual residence**

Postcode of Usual Residence	Female	Male	Unknown	Total Responses
Unknown	557	66	158	781
Lameroo - Robertstown	717	39	6	762
Mallalla - Yorketown	538	28	0	566
Metropolitan Adelaide area, Gawler - Aldinga	11,924	1,167	30	13,121
Pt Augusta - Far North of S.A.	323	14	0	247
Riverton, Burra, Peterborough	435	20	1	455
Whyalla - Ceduna	609	34	0	645
Yankallilla - Mt Gambier	1,707	99	2	1,806
	<b>16,810</b>	<b>1,467</b>	<b>197</b>	<b>18,383</b>

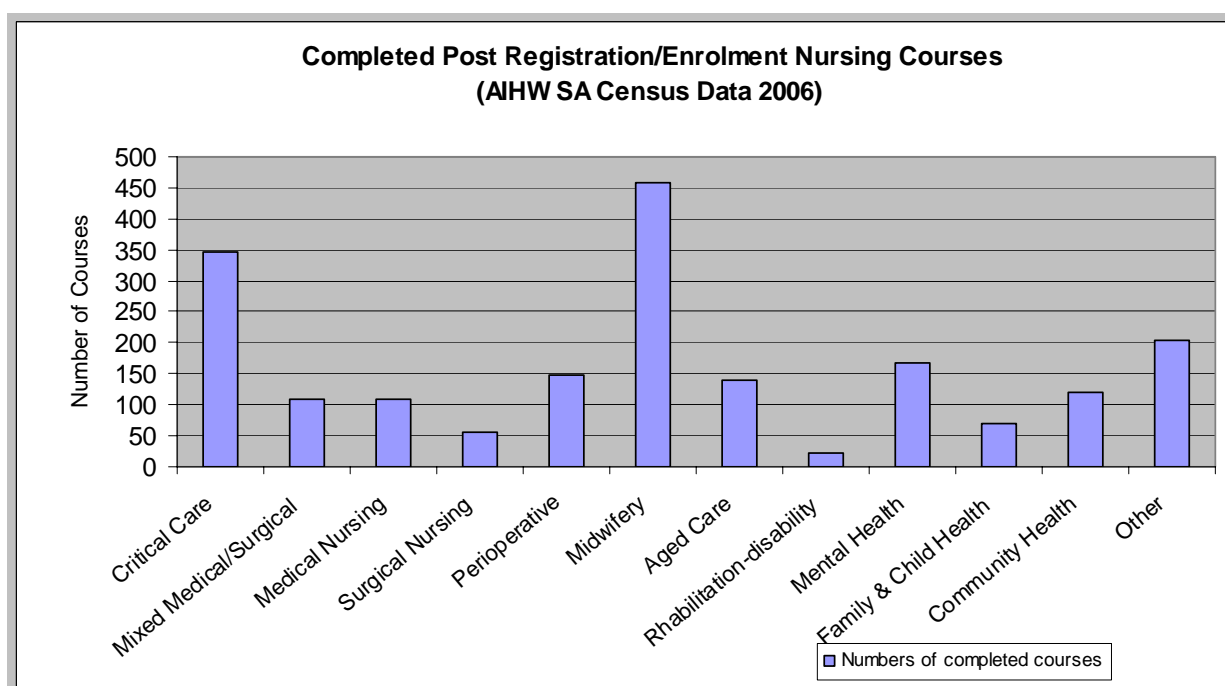
## APPENDIX E: NURSING QUALIFICATIONS

**Graph 6 - Overseas Countries where 1<sup>st</sup> nursing qualification was received**



Standard Australian Classification of Countries (SACC) 1998 – Major Groups

**Graph 7 - Completed Post Registration/Enrolment Nursing Courses**



NOTE: 7,320 (40%) of respondents indicated they had completed any post-registration/enrolment courses of study in relation to nursing or midwifery. Of these respondents, only 1,953 (26%) identified which study course they had completed.

## APPENDIX F: NURSE & MIDWIFE EMPLOYMENT PATTERNS

**Table 6: Average hours worked per week as a nurse**

TABLE 6

<b>AVERAGE HOURS WORKED PER WEEK</b>		
	<b>Main Job</b>	<b>2nd Job</b>
Paid regular hours	26.74 hrs	1.05 hrs
Hours worked above contract hours	0.71 hrs	0.03 hrs
Paid overtime hours	0.38 hrs	0.01 hrs
Unpaid extra hours	0.62 hrs	0.03 hrs
<b>Total</b>	<b>28.44 hrs</b>	<b>1.12 hrs</b>

**Table 7: Average hours worked per core nursing role per week**

TABLE 7

<b>AVERAGE HOURS WORKED PER WEEK PER CORE NURSING ROLE</b>		
<b>Core nursing role</b>	<b>Main Job</b>	<b>2nd Job</b>
Clinical	18.5 hrs	0.75 hrs
Clinical Management/admin	3.79 hrs	0.06 hrs
Lecturing, Clinical Education/Supervision/support	1.03 hrs	0.06 hrs
Research	0.41 hrs	0.02 hrs
Other Nursing/Midwifery activity	2.03 hrs	0.09 hrs
Total Hours	25.74 hrs	0.98 hrs

**Table 8: Employment sector**

TABLE 8

<b>EMPLOYMENT SECTOR</b>		
<b>AIHW SA Census Data 2006</b>	<b>Public Sector</b>	<b>Private Sector</b>
All nurses	60%	32%
Enrolled Nurses	13%	7%
Registered Nurses	47%	24%
Midwives	11%	4%
Mental Health Nurses	5%	1%

**Table 9: Principal place of work**

TABLE 9

Principal place of work	Main Job	2nd Job
Hospital	10,300	730
Psychiatric hospital/mental health facility	646	41
Outpatient clinic	130	19
Day procedure centre	179	35
Residential aged care	2,301	292
Hospice	69	6
Other residential care facility	231	32
Community health centre	883	82
Defense force facility	22	11
Government department	128	17
GP's practice	400	85
Specialist's rooms/practice	213	67
School	33	15
Commercial/industry/business	119	25
Tertiary institution	280	120
Unknown/other	2,449	16,806
<b>Total</b>	<b>18,383</b>	<b>18,383</b>

**Table 10: Nurse Classification by main job**

TABLE 10

Nurse Classification by Main Job	
	Nurse Responses
Enrolled Nurse	3,544
Level 1 Registered Nurse	8,479
Level 1 Nurse Specialist	453
Level 2 Clinical Nurse	2,096
Level 3 Nurse Practitioner	65
Level 3 Clinical Nurse Consultant	544
Level 3 Nurse Manager	544
Level 3 Staff Development / Education	117
Level 4 Clinical	48
Level 4 Management	150
Level 4 Staff Development / Education	20
Level 5 Director of Nursing	248
Higher Education or TAFE Lecturer	121
Professor / Academic	68
Non-nursing Award	177
<b>Unknown response/other</b>	<b>1,709</b>
<b>Total</b>	<b>18,383</b>

**Table 11: Geographical Location of main job****TABLE 11**

<b>Geographical Location of main job</b>	<b>Female</b>	<b>Male</b>	<b>Unknown</b>	<b>Total</b>
Unknown/No Response	2,448	218	134	<b>2,800</b>
Lameroo - Robertstown	547	29	6	<b>582</b>
Mallala - Yorketown	473	29	0	<b>502</b>
Metropolitan Adelaide area, Gawler - Aldinga	10,914	1082	52	<b>12,048</b>
Pt Augusta - Far North of S.A.	244	16	1	<b>261</b>
Riverton, Burra, Peterborough	344	16	1	<b>361</b>
Whyalla - Ceduna	563	30	2	<b>595</b>
Yankalilla - Mt Gambier	1,186	47	1	<b>1,234</b>
<b>Total</b>	<b>16,719</b>	<b>1,467</b>	<b>197</b>	<b>18,383</b>