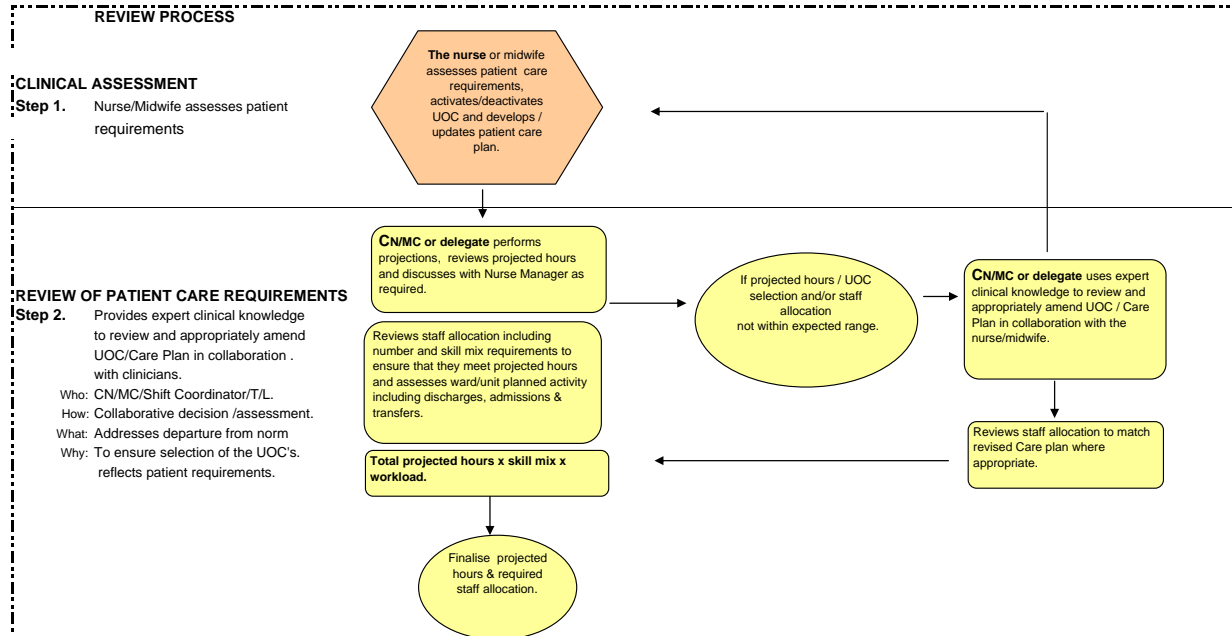


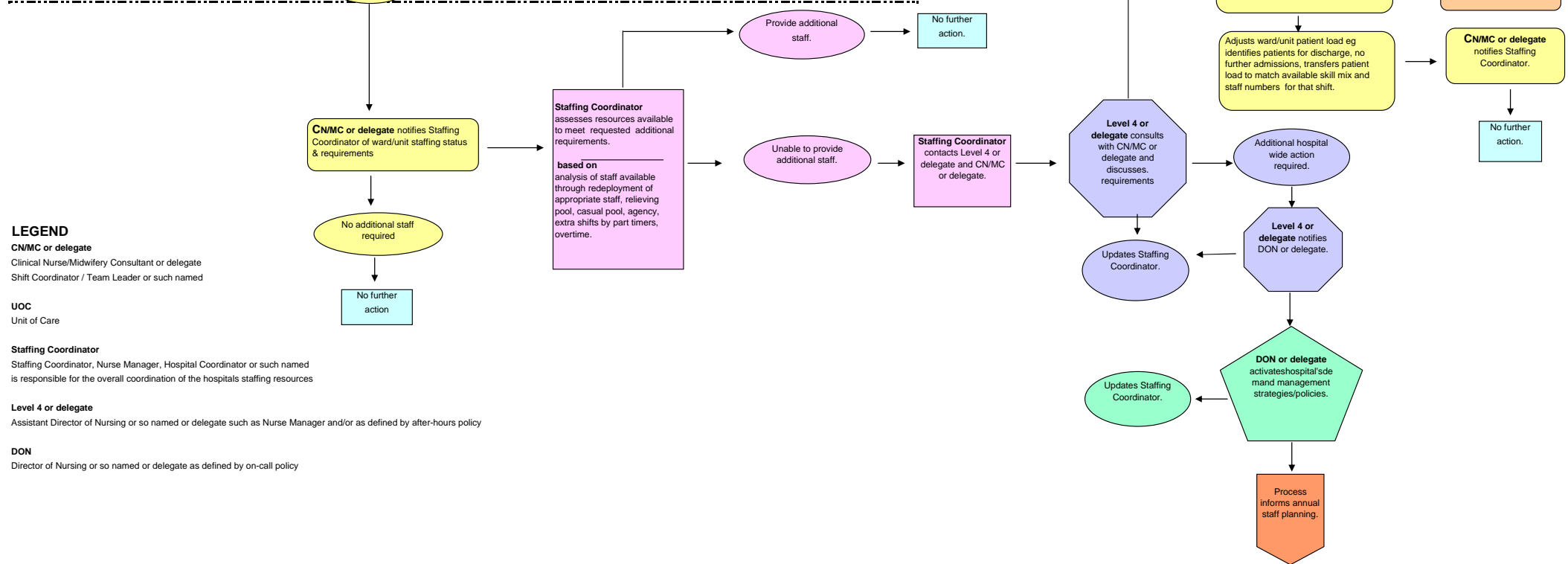
Nursing and Midwifery Shift by Shift Staffing Requirements Decision Making Tree



This decision making tree defines the sequential decision making steps to be undertaken in priority order for the provision of staffing to meet patient care requirements.

It is noted that terms used in this decision making tree may vary from site to site.

It is noted that this decision making tree will be applied within the existing health unit's bed management procedures/policies provided that the necessary reduction in activity is achieved.



LEGEND

CN/MC or delegate
 Clinical Nurse/Midwifery Consultant or delegate
 Shift Coordinator / Team Leader or such named

UOC
 Unit of Care

Staffing Coordinator
 Staffing Coordinator, Nurse Manager, Hospital Coordinator or such named
 is responsible for the overall coordination of the hospitals staffing resources

Level 4 or delegate
 Assistant Director of Nursing or so named or delegate such as Nurse Manager and/or as defined by after-hours policy

DON
 Director of Nursing or so named or delegate as defined by on-call policy